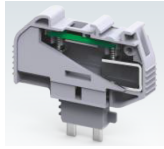


CC6D



1N4007 diode plug

This is the component plugs which are used for the diode application with Component carrier terminal block.

PRODUCT SPECIFICATION

Height	35 mm
Length	28 mm
Rated Current	1 A
Suitable For	CPCC6
Width (Thickness)	6 mm

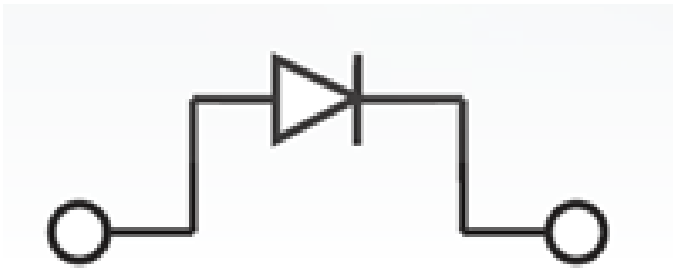
ORDERING INFORMATION

CAT. NO.	DESCRIPTION	STD. PACK
CC6D	Component diode plug for component terminal block	50

NOTES

Used with Component Carrier Terminal Blocks CCC4U & CXCC4

CIRCUIT DIAGRAM



SUITABLE FOR

CPCC6	10 sq.mm Component carrier spring clamp terminal block
CCC4U	Component carrier terminal block
CXCC4	4 sq.mm Component carrier spring clamp terminal block
CXCC4/3	4 sq.mm Component carrier spring clamp terminal block