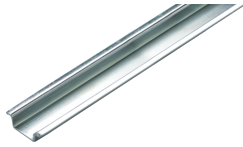


CA601



**connectwell**  
THE RIGHT CONNECTION

#### DIN 15 Rail

Din Rail for mounting Terminal Blocks and Interface modules. Most of Connectwell's Terminal Blocks and Interface Modules are designed to be mounted on Din Rails (Channels) that can be fixed easily on panel boards and other equipment. These rails comply with European standards EN 50 035. The rails are zinc plated and chromate passivated. Accordingly to the DIN VDE 0611 part 3, steel mounting rails are permissible as grounding bus bars (PE function) but do not have the PEN function.

#### PRODUCT SPECIFICATION

|                   |      |
|-------------------|------|
| Height            | 5 mm |
| Width (Thickness) | 1 mm |

#### ORDERING INFORMATION

| CAT. NO. | DESCRIPTION           | STD. PACK |
|----------|-----------------------|-----------|
| CA601    | Din 15 Rail unslotted | 100       |