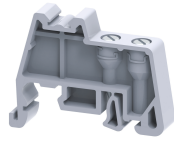


CR702



**connectwell**  
THE RIGHT CONNECTION

### End Clamp Radiation Resistance

Radiation Resistance End Clamps helps to secure the entire Terminal Block assembly on the Din Rail. End Clamps should be fixed on both sides of the Terminal Block assemblies.

#### PRODUCT SPECIFICATION

Height	34 mm
Length	44 mm
Width (Thickness)	9 mm

#### ORDERING INFORMATION

CAT. NO.	DESCRIPTION	STD. PACK
CR702	End Clamp in Peak Material suitable for Din 32 / Din 35 / Din 35-15 Rails	50

#### NOTES

CA509/G1 marking tag can be used as an accessory.