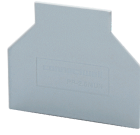


PPCMT4



**connectwell**  
THE RIGHT CONNECTION

### Partition Plate

Partition Plate are used to segregate different groups of Terminal Blocks and provide the required creepage and clearance values in an assembly. Partition Plates electrically isolate adjacent shorting links. They also provide a separation between Terminal Blocks of different potentials.

#### PRODUCT SPECIFICATION

Height	32 mm
Length	37 mm
Width (Thickness)	1.6 mm

#### ORDERING INFORMATION

CAT. NO.	DESCRIPTION	STD. PACK
PPCMT4	Partition Plate in Grey colour suitable for CMT4 Terminal Block	50