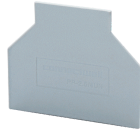


PPCSC6T



**connectwell**  
THE RIGHT CONNECTION

### Partition Plate

Partition Plate are used to segregate different groups of Terminal Blocks and provide the required creepage and clearance values in an assembly. Partition Plates electrically isolate adjacent shorting links. They also provide a separation between Terminal Blocks of different potentials.

#### PRODUCT SPECIFICATION

Height	36.5 mm
Length	72 mm
Width (Thickness)	2 mm

#### ORDERING INFORMATION

CAT. NO.	DESCRIPTION	STD. PACK
PPCSC6T	Partition Plate in Grey colour	50