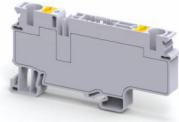


CPCC6



10 sq.mm Component carrier spring clamp terminal block

These blocks are used for measuring, control, regulatory circuits and for current transformer connection application. These blocks are component carrier base. Various pluggable component carriers can be installed easily. These component carriers have built in protection against incorrect polarity.

CC6F, CC6R and CC6D component plugs are suitable for these terminal block.

TECHNICAL DATA

Rated Voltage	1000 V
Rated Current	20 A
Housing Material	Polymide
Standard Colour	Grey
Product Function	Feed Through
Wire Entry Orientation	Top
Mounting Possibility	DIN 35/DIN 35-15 Rail
Rated Surge Voltage	6 V
Pollution Degree	3

CONNECTION DATA

Conductor Cross Section Stranded min.	0.5 mm ²
Conductor Cross Section Stranded max.	10 mm ²
Conductor Cross Section AWG/Kcmil min	20 AWG
Conductor Cross Section AWG/Kcmil max	8 AWG
Stripping Length	12 mm

DIMENSIONS

Height with DIN 35 x 15 mm rail	50.5 mm
Height with DIN 35 x 7.5 mm rail	43 mm
Length	82.9 mm
Width (Thickness)	8 mm

ORDERING INFORMATION

CAT. NO.	DESCRIPTION	STD. PACK
CPCC6	10 sq. mm Component Carrier compact spring clamp Terminal Block in Grey colour	50

ACCESSORIES

IMAGES	CAT. NO.	DESCRIPTION	STD. PACK
	CA701-1M	Din 35 Rail unslotted 1 meter	50
	CA701-2M	Din 35 Rail unslotted 2 meter	50
	CA701-2M-S	Din 35 Rail slotted 2 meter	50
	CA701-1M-S	Din 35 Rail slotted 1 meter	50
	CA701-15-1M	Din 35 Rail 15 deep unslotted 1 meter	50
	CA701-15-1M-S	Din 35 Rail 15 deep slotted 1 meter	50
	CA701-15-2M	Din 35 Rail 15 deep unslotted 2 meter	50
	CA701-15-2M-S	Din 35 Rail 15 deep slotted 2 meter	50

ACCESSORIES

IMAGES	CAT. NO.	DESCRIPTION	STD. PACK
	CA103	EndClamp in Polyamide suitable for Din 35/Din 35-15 rails	50
	CA702	End Clamp in Polyamide 66 suitable for Din 32 / Din 35 / Din 35-15 Rails	50
	CA802	End Clamp in Polyamide suitable for Din 35 / Din 35-15 Rails	50
	CA509/K6	Blank Marking Tag	100
	JX6/2	Shorting Link for 8 mm wide TB	100
	JX6/3	Shorting Link for 8 mm wide TB	50
	JX6/4	Shorting Link for 8 mm wide TB	50
	JX6/10	Shorting Link for 8 mm wide TB	10
	CC6F	Fuse plug for component terminal block	50
	CC6FL6-60V	Fuse with 6-60V AC/DC LED Circuit	50
	CC6FL110-240V	Fuse with 110-240V AC/DC LED Circuit	50
	CC6R1.5	1.5k Ohm Resistor plug for component carrier Terminal Block	50
	CC6R0.5	0.5k Ohm Resistor plug for component carrier Terminal Block	50
	CC6D	Component diode plug for component terminal block	50
	MC8	MARKER CARD 8MM PITCH WITH 48 TAGS	10

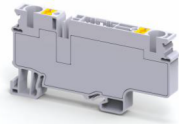
APPROVALS



NOTES

* Current rating are based on the component carriers.
The Rated current is with the use of copper (Cu) conductor/Wire

CPCC6



connectwell
THE RIGHT CONNECTION

RATINGS AS PER STANDARDS

STANDARDS	UL 1059	CSA C.22.2 No:158	IEC/EN60947-7-1
Approvals	UL	CSA	CE
Conductor Cross Section Stranded min.	24 AWG	24 AWG	0.2 mm ²
Conductor Cross Section Stranded max.	10 AWG	10 AWG	4 mm ²
Rated Voltage	600 V	600 V	1000 V
Rated Current	* A	* A	* A