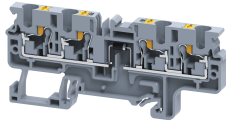


# CP4/4(E)D1



## 4 sq.mm Push In Feed Through compact diode Terminal Blocks

CP series Push In type Terminal Block are the next generation, compact Terminal Blocks. These series of Terminal Blocks have 1000V rating as per IEC guidelines. The new CP series terminals have a much wider range for wire terminations. The Push button on the top is to be pressed for using flexible cable without lug for connections. Lugged cable can be directly pressed into clamp to make connections.

### TECHNICAL DATA

Rated Voltage	1000 V
Housing Material	Polymide
Standard Colour	Grey
Product Function	With Electronic Components: Diode/Resistor
Wire Entry Orientation	Top
Mounting Possibility	DIN 35/DIN 35-15 Rail
Operated by	Screw Driver
Rated Surge Voltage	8 KV
Pollution Degree	3

### CONNECTION DATA

Conductor Cross Section Stranded min.	0.2 mm <sup>2</sup>
Conductor Cross Section Stranded max.	4 mm <sup>2</sup>
Conductor Cross Section AWG/Kcmil min	24 AWG
Conductor Cross Section AWG/Kcmil max	10 AWG
Conductor Cross Section Solid min	0.2 mm <sup>2</sup>
Conductor Cross Section Solid max	6 mm <sup>2</sup>
Stripping Length	11 mm

### DIMENSIONS

Height with DIN 35 x 15 mm rail	45.75 mm
Height with DIN 35 x 7.5 mm rail	38.25 mm
Length	84.5 mm
Width (Thickness)	6 mm

### DIODE SPECIFICATIONS

Diode Type	1N4007
Diode Reverse Voltage	1000 V
Diode Forward Current	1 A
Diode Type	1N4007
Diode Reverse Voltage	1000 V
Diode Forward Current	1 A
Diode Type	1N4007
Diode Reverse Voltage	1000 V
Diode Forward Current	1 A
Diode Type	1N4007
Diode Reverse Voltage	1000 V
Diode Forward Current	1 A

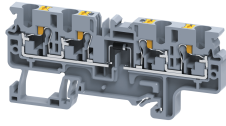
### ORDERING INFORMATION

CAT. NO.	DESCRIPTION	STD. PACK
CP4/4(E)D1	4 sq.mm Diode 1N4007 Push In 4 Wire Terminal Block in Grey colour	50

### ACCESSORIES

IMAGES	CAT. NO.	DESCRIPTION	STD. PACK
	CA701-1M	Din 35 Rail unslotted 1 meter	50
	CA701-2M	Din 35 Rail unslotted 2 meter	50
	CA701-2M-S	Din 35 Rail slotted 2 meter	50
	CA701-1M-S	Din 35 Rail slotted 1 meter	50
	CA701-15-1M	Din 35 Rail 15 deep unslotted 1 meter	50
	CA701-15-1M-S	Din 35 Rail 15 deep slotted 1 meter	50
	CA701-15-2M	Din 35 Rail 15 deep unslotted 2 meter	50
	CA701-15-2M-S	Din 35 Rail 15 deep slotted 2 meter	50
	CA103	EndClamp in Polyamide suitable for Din 35/Din 35-15 rails	50
	CA702	End Clamp in Polyamide 66 suitable for Din 32 / Din 35 / Din 35-15 Rails	50
	CA802	End Clamp in Polyamide suitable for Din 35 / Din 35-15 Rails	50
	EPCX4/4	End Plate in Grey colour	50
	EPCX4/40	End Plate in Orange colour	50
	PPCX4/4	Partition Plate in Grey colour	50
	CA509/K6	Blank Marking Tag	100
	SCS0.6/3.5	Electricians Screwdriver for slotted screws	10
	JX4/2	Shorting Link for 6 mm wide TB	100
	JX4/3	Shorting Link for 6 mm wide TB	50
	JX4/4	Shorting Link for 6 mm wide TB	50
	JX4/5	Shorting Link for 6 mm wide TB	50
	JX4/8	Shorting Link for 6 mm wide TB	10
	JX4/10	Shorting Link for 6 mm wide TB	10
	JX4/16	Shorting Link for 6 mm wide TB	10

CP4/4(E)D1



**connectwell**  
THE RIGHT CONNECTION

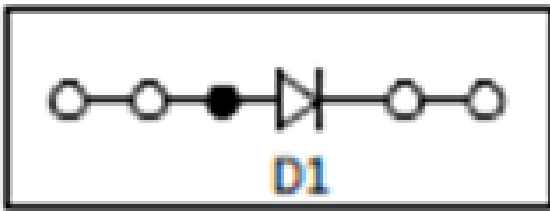
APPROVALS



NOTES

The Rated current is with the use of copper (Cu) conductor/Wire

CIRCUIT DIAGRAM



RATINGS AS PER STANDARDS

STANDARDS	IEC/EN60947-7-1
Approvals	CE
Conductor Cross Section Stranded min.	0.2 mm <sup>2</sup>
Conductor Cross Section Stranded max.	4 mm <sup>2</sup>
Rated Voltage	1000 V