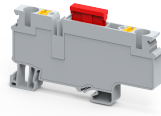


# CPAF6



## 6 sq.mm Push in Fuse Terminal Block with Automotive Fuse

CP series Push-In Terminal Blocks have a specialised connection system that enables tool less wire connections. Reliable, vibration resistant, gas tight connections are made with inbuilt high quality stainless steel Push in spring clamps.

### TECHNICAL DATA

Rated Voltage	1000 V
Rated Current	30 A
Housing Material	Polymide
Standard Colour	Grey
Product Function	Single Level Fuse
Wire Entry Orientation	Top
Mounting Possibility	DIN 35/DIN 35-15 Rail
Operated by	Screwdriver
Rated Surge Voltage	6 KV
Pollution Degree	3

### CONNECTION DATA

Conductor Cross Section Stranded min.	0.5 mm <sup>2</sup>
Conductor Cross Section Stranded max.	10 mm <sup>2</sup>
Conductor Cross Section AWG/Kcmil min	20 AWG
Conductor Cross Section AWG/Kcmil max	8 AWG
Conductor Cross Section Stranded with Ferrule/Lug min	0.5 mm <sup>2</sup>
Conductor Cross Section Stranded with Ferrule/Lug max	10 mm <sup>2</sup>
2 Conductors with same Cross Section Stranded with TWIN Ferrule/Lug min	0.5 mm <sup>2</sup>
2 Conductor with same Cross Section Stranded with TWIN Ferrule/Lug max	2.5 mm <sup>2</sup>
Stripping Length	12 mm

### DIMENSIONS

Height with DIN 35 x 15 mm rail	50.5 mm
Height with DIN 35 x 7.5 mm rail	43 mm
Length	82.9 mm
Width (Thickness)	8 mm

### FUSE SPECIFICATIONS

Fuse Type	Automotive Fuse
-----------	-----------------

### ORDERING INFORMATION

CAT. NO.	DESCRIPTION	STD. PACK
CPAF6	6mm <sup>2</sup> Push In Fuse Terminal Block with Automotive Fuse in Grey Colour	50
CPAF6L12V	6mm <sup>2</sup> Push In Automotive Fuse Terminal Block with LED Indication 12V in Grey Colour	50

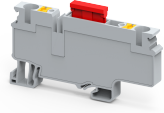
### ORDERING INFORMATION

CAT. NO.	DESCRIPTION	STD. PACK
CPAF6L24V	6mm <sup>2</sup> Push In Automotive Fuse Terminal Block with LED Indication 24V in Grey Colour	50

### ACCESSORIES

IMAGES	CAT. NO.	DESCRIPTION	STD. PACK
	CA701-1M	Din 35 Rail unslotted 1 meter	50
	CA701-2M	Din 35 Rail unslotted 2 meter	50
	CA701-2M-S	Din 35 Rail slotted 2 meter	50
	CA701-1M-S	Din 35 Rail slotted 1 meter	50
	CA701-15-1M	Din 35 Rail 15 deep unslotted 1 meter	50
	CA701-15-1M-S	Din 35 Rail 15 deep slotted 1 meter	50
	CA701-15-2M	Din 35 Rail 15 deep unslotted 2 meter	50
	CA701-15-2M-S	Din 35 Rail 15 deep slotted 2 meter	50
	CA103	EndClamp in Polyamide suitable for Din 35/Din 35-15 rails	50
	CA104	EndClamp in Polyamide suitable for Din 35/Din 35-15 rails	50
	JX6/2	Shorting Link for 8 mm wide TB	100
	JX6/3	Shorting Link for 8 mm wide TB	50
	JX6/4	Shorting Link for 8 mm wide TB	50
	JX6/10	Shorting Link for 8 mm wide TB	10
	JXS6/4	Step Down Shorting Link for CX series	10
	JXS6/2.5	Step Down Shorting Link for CX series	10
	CA509/K8	Marking Tag with Vertical printing.	100
	MC8	MARKER CARD 8MM PITCH WITH 48 TAGS	10

CPAF6



**connectwell**  
THE RIGHT CONNECTION

**APPROVALS**



**NOTES**

The Rated current is with the use of copper (Cu) conductor/Wire

**RATINGS AS PER STANDARDS**

STANDARDS	UL 1059	IEC/EN60947-7-3
Conductor Cross Section Stranded min.	20 AWG	0.5 mm <sup>2</sup>
Conductor Cross Section Stranded max.	8 AWG	10 mm <sup>2</sup>
Rated Voltage	600 V	1000 V
Rated Current	30 A	30 A