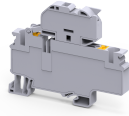


CPF6



connectwell
THE RIGHT CONNECTION

10 sq.mm Push in Fuse Terminal Blocks

CP series Push-In Terminal Blocks have a specialised connection system that enables tool less wire connections. Reliable, vibration resistant, gas tight connections are made with inbuilt high quality stainless steel Push in spring clamps.

TECHNICAL DATA	
Rated Voltage	1000 V
Rated Current	16 A
Housing Material	Polymide
Standard Colour	Grey
Product Function	Single Level Fuse
Wire Entry Orientation	Top
Mounting Possibility	DIN 35/DIN 35-15 Rail
Operated by	Screwdriver
Rated Surge Voltage	4 KV
Pollution Degree	3

CONNECTION DATA	
Conductor Cross Section Stranded min.	0.5 mm ²
Conductor Cross Section Stranded max.	10 mm ²
Conductor Cross Section AWG/Kcmil min	20 AWG
Conductor Cross Section AWG/Kcmil max	8 AWG
Conductor Cross Section Stranded with Ferrule/Lug min	0.5 mm ²
Conductor Cross Section Stranded with Ferrule/Lug max	10 mm ²
Conductor Cross Section Solid min	0.5 mm ²
Conductor Cross Section Solid max	10 mm ²
2 Conductors with same Cross Section Stranded with TWIN Ferrule/Lug min	0.5 mm ²
2 Conductor with same Cross Section Stranded with TWIN Ferrule/Lug max	2.5 mm ²
Stripping Length	12 mm

DIMENSIONS	
Height	66.3 mm
Height with DIN 35 x 15 mm rail	74.6 mm
Height with DIN 35 x 7.5 mm rail	67.1 mm
Length	82.9 mm
Width (Thickness)	8 mm

FUSE SPECIFICATIONS	
Fuse Type	Glass Fuse
Fuse Size	6.3x32 mm
Fuse Current Rating	16 A

ORDERING INFORMATION		
CAT. NO.	DESCRIPTION	STD. PACK
CPF6	10mm ² Ø6.3X32mm Push In Fuse Terminal Block in Grey Colour	50
CPF6L6-60V	10mm ² Ø6.3X32mm Push In Fuse Terminal Block with LED Indication 6-60V in Grey Colour	50
CPF6L110-240V	10mm ² Ø6.3X32mm Push In Fuse Terminal Block with LED Indication 110-240V in Grey Colour	50

ACCESSORIES			
IMAGES	CAT. NO.	DESCRIPTION	STD. PACK
	CA701-1M	Din 35 Rail unslotted 1 meter	50
	CA701-2M	Din 35 Rail unslotted 2 meter	50
	CA701-2M-S	Din 35 Rail slotted 2 meter	50
	CA701-1M-S	Din 35 Rail slotted 1 meter	50

	CA701-15-1M	Din 35 Rail 15 deep unslotted 1 meter	50
	CA701-15-1M-S	Din 35 Rail 15 deep slotted 1 meter	50
	CA701-15-2M	Din 35 Rail 15 deep unslotted 2 meter	50
	CA701-15-2M-S	Din 35 Rail 15 deep slotted 2 meter	50

	CA103	EndClamp in Polyamide suitable for Din 35/Din 35-15 rails	50
--	-------	---	----

	CA104	EndClamp in Polyamide suitable for Din 35/Din 35-15 rails	50
--	-------	---	----

	CA509/K8	Marking Tag with Vertical printing.	100
--	----------	-------------------------------------	-----

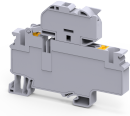
	JX6/2	Shorting Link for 8 mm wide TB	100
	JX6/3	Shorting Link for 8 mm wide TB	50
	JX6/4	Shorting Link for 8 mm wide TB	50
	JX6/10	Shorting Link for 8 mm wide TB	10

	MC8	MARKER CARD 8MM PITCH WITH 48 TAGS	10
--	-----	------------------------------------	----

APPROVALS



CPF6



connectwell
THE RIGHT CONNECTION

NOTES

The Rated current is with the use of copper (Cu) conductor/Wire

RATINGS AS PER STANDARDS

STANDARDS	UL 1059	CSA C.22.2 No:158	IEC/EN60947-7-3
Conductor Cross Section Stranded min.	20 AWG	20 AWG	0.5 mm ²
Conductor Cross Section Stranded max.	8 AWG	8 AWG	10 mm ²
Rated Voltage	600 V	600 V	1000 V
Rated Current	16 A	16 A	16 A