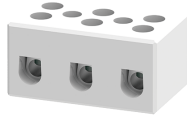


CB16



connectwell
THE RIGHT CONNECTION

Ceramic Terminal Blocks for 10 sq.mm wire.

These Terminal Blocks are used in extremely high temperature applications such as hot melt glue guns, furnaces, heaters, process equipment and machinery. These Ceramic Terminal Blocks have an operating temperature range of -40° to 650° C

TECHNICAL DATA

Rated Voltage	800 V
Rated Current	57 A
Tightening Torque	1.2 Nm
Housing Material	Ceramic
Product Function	High Temperature
Wire Entry Orientation	Side Entry
Mounting Possibility	Panel/Surface
Screw Size	M4
Operated by	Screwdriver
Rated Surge Voltage	4 KV
Pollution Degree	3

CONNECTION DATA

Conductor Cross Section Stranded min.	1.5 mm ²
Conductor Cross Section Stranded max.	10 mm ²
Conductor Cross Section AWG/Kcmil min	22 AWG
Conductor Cross Section AWG/Kcmil max	6 AWG
Conductor Cross Section Stranded with Ferrule/Lug min	1.5 mm ²
Conductor Cross Section Stranded with Ferrule/Lug max	10 mm ²
2 Conductors with same Cross Section Stranded min	1.5 mm ²
2 Conductor with same Cross Section Stranded max	6.0 mm ²
Conductor Cross Section Solid min	1.5 mm ²
2 Conductors with same Cross Section Stranded with TWIN Ferrule/Lug min	1.5 mm ²
2 Conductor with same Cross Section Stranded with TWIN Ferrule/Lug max	6.0 mm ²
Stripping Length	8 mm

DIMENSIONS

Height	28 mm
Width (Thickness)	23 mm

ORDERING INFORMATION

CAT. NO.	DESCRIPTION	STD. PACK
CB16/2H	10 sq.mm 2 Pole Ceramic Terminal Block with Mounting Hole with 800 V	25
CB16/3H	10 sq.mm 3 Pole Ceramic Terminal Block with Mounting Hole with 800 V	25

ACCESSORIES

IMAGES	CAT. NO.	DESCRIPTION	STD. PACK
	SCS0.8/4	Electricians Screwdriver for slotted screws	10
	CA716/2	External Comb Type Shorting Link available in 2 Pole	50
	CA716/3	External Comb Type Shorting Link available in 3 Pole	50
	CA716/4	External Comb Type Shorting Link available in 4 Pole	50
	CA716/10	External Comb Type Shorting Link available in 10 Pole	20
	CA716/5-3A	External Comb Type Shorting Link 3 pole alternate suitable for CB16/3H	50

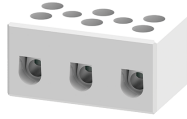
APPROVALS



NOTES

The Rated current is with the use of copper (Cu) conductor/Wire

CB16



connectwell
THE RIGHT CONNECTION

RATINGS AS PER STANDARDS

STANDARDS	UL 1059	CSA C.22.2 No:158	IEC/EN60947-7-1
Approvals	UL	CSA	CE
Conductor Cross Section Stranded min.	22 AWG	22 AWG	1.5 mm ²
Conductor Cross Section Stranded max.	6 AWG	6 AWG	10 mm ²
Rated Voltage	300 V	300 V	800 V
Rated Current	65 A	76 A	57 A
Tightening Torque	12 lb-in	14 lb-in	1.2 Nm