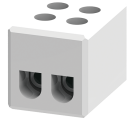


CB4



connectwell
THE RIGHT CONNECTION

Ceramic Terminal Blocks for 4 sq.mm wire.

These Terminal Blocks are used in extremely high temperature applications such as hot melt glue guns, furnaces, heaters, process equipment and machinery. These Ceramic Terminal Blocks have an operating temperature range of -40° to 650° C

TECHNICAL DATA

Rated Voltage	1000 V
Rated Current	24 A
Tightening Torque	0.4 Nm
Housing Material	Ceramic
Product Function	High Temperature
Wire Entry Orientation	Side Entry
Mounting Possibility	Free Floating / Surface / Panel
Screw Size	M3
Operated by	Screwdriver
Rated Surge Voltage	4 KV
Pollution Degree	3

CONNECTION DATA

Conductor Cross Section Stranded min.	0.5 mm ²
Conductor Cross Section Stranded max.	2.5 mm ²
Conductor Cross Section AWG/Kcmil min	24 AWG
Conductor Cross Section AWG/Kcmil max	12 AWG
Conductor Cross Section Stranded with Ferrule/Lug min	0.5 mm ²
Conductor Cross Section Stranded with Ferrule/Lug max	2.5 mm ²
2 Conductors with same Cross Section Stranded min	0.5 mm ²
2 Conductor with same Cross Section Stranded max	1.5 mm ²
Conductor Cross Section Solid min	0.5 mm ²
Conductor Cross Section Solid max	4.0 mm ²
2 Conductors with same Cross Section Stranded with TWIN Ferrule/Lug min	0.5 mm ²
2 Conductor with same Cross Section Stranded with TWIN Ferrule/Lug max	1.5 mm ²
Stripping Length	8 mm

DIMENSIONS

Height	25 mm
Width (Thickness)	19 mm


ORDERING INFORMATION

CAT. NO.	DESCRIPTION	STD. PACK
CB4/1	2.5 sq.mm Free Floating 1 Pole Ceramic Terminal Block with 1000 V	50
CB4/2	2.5 sq.mm Free Floating 1 Pole Ceramic Terminal Block with 800 V	50

ORDERING INFORMATION

CAT. NO.	DESCRIPTION	STD. PACK
CB4/2H	2.5 sq.mm 2 Pole Ceramic Terminal Block with Mounting Hole with 500 V	50
CB4/3	2.5 sq.mm Free Floating 3 Pole Ceramic Terminal Block with 800 V	50
CB4/3H	2.5 sq.mm 3 Pole Ceramic Terminal Block with Mounting Hole with 500 V	50

ACCESSORIES

IMAGES	CAT. NO.	DESCRIPTION	STD. PACK
	SCS0.5/3	Electricians Screwdriver for slotted screws	10

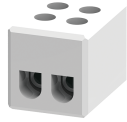
APPROVALS



NOTES

The Rated current is with the use of copper (Cu) conductor/Wire

CB4



connectwell
THE RIGHT CONNECTION

RATINGS AS PER STANDARDS

STANDARDS	CSA C.22.2 No:158	UL 1059	IEC/EN60947-7-1
Approvals	CSA	UL	CE
Conductor Cross Section Stranded min.	24 AWG	24 AWG	0.5 mm ²
Conductor Cross Section Stranded max.	12 AWG	12 AWG	2.5 mm ²
Rated Voltage	300 V	300 V	1000 V
Rated Current	30 A	20 A	24 A
Tightening Torque	7 lb-in	6 lb-in	0.4 Nm