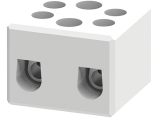


CB6



connectwell
THE RIGHT CONNECTION

Ceramic Terminal Blocks for 4 sq.mm wire.

These Terminal Blocks are used in extremely high temperature applications such as hot melt glue guns, furnaces, heaters, process equipment and machinery. These Ceramic Terminal Blocks have an operating temperature range of -40° to 650° C

TECHNICAL DATA

Rated Voltage	800 V
Rated Current	32 A
Tightening Torque	0.5 Nm
Housing Material	Ceramic
Product Function	Feed Through
Wire Entry Orientation	Side Entry
Mounting Possibility	Free Floating / Surface / Panel
Screw Size	M3.5
Operated by	Screwdriver
Rated Surge Voltage	4 KV
Pollution Degree	3

CONNECTION DATA

Conductor Cross Section Stranded min.	0.5 mm ²
Conductor Cross Section Stranded max.	4.0 mm ²
Conductor Cross Section AWG/Kcmil min	22 AWG
Conductor Cross Section AWG/Kcmil max	10 AWG
Conductor Cross Section Stranded with Ferrule/Lug min	0.5 mm ²
Conductor Cross Section Stranded with Ferrule/Lug max	4.0 mm ²
2 Conductors with same Cross Section Stranded min	0.5 mm ²
2 Conductor with same Cross Section Stranded max	2.5 mm ²
Conductor Cross Section Solid min	0.5 mm ²
Conductor Cross Section Solid max	6.0 mm ²
2 Conductors with same Cross Section Stranded with TWIN Ferrule/Lug min	0.5 mm ²
2 Conductor with same Cross Section Stranded with TWIN Ferrule/Lug max	2.5 mm ²
Stripping Length	8 mm

DIMENSIONS

Height	25 mm
Width (Thickness)	19 mm

ORDERING INFORMATION

CAT. NO.	DESCRIPTION	STD. PACK
CB6/1	4 sq.mm Free Floating 1 Pole Ceramic Terminal Block with 1000 V	50
CB6/2H	4 sq.mm 2 Pole Ceramic Terminal Block with Mounting Hole with 800 V	25

ORDERING INFORMATION

CAT. NO.	DESCRIPTION	STD. PACK
CB6/3H	4 sq.mm 3 Pole Ceramic Terminal Block with Mounting Hole with 630 V	25
CB6/4H	4 sq.mm 4 Pole Ceramic Terminal Block with Mounting Hole with 630 V	25

ACCESSORIES

IMAGES	CAT. NO.	DESCRIPTION	STD. PACK
	SCS0.8/4	Electricians Screwdriver for slotted screws	10

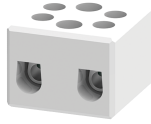
APPROVALS



NOTES

The Rated current is with the use of copper (Cu) conductor/Wire

CB6



connectwell
THE RIGHT CONNECTION

RATINGS AS PER STANDARDS

STANDARDS	UL 1059	CSA C.22.2 No:158	IEC/EN60947-7-1
Approvals	UL	CSA	CE
Conductor Cross Section Stranded min.	22 AWG	22 AWG	0.5 mm ²
Conductor Cross Section Stranded max.	10 AWG	10 AWG	4 mm ²
Rated Voltage	300 V	300 V	800 V
Rated Current	30 A	40 A	32 A
Tightening Torque	6 lb-in	7 lb-in	0.5 Nm