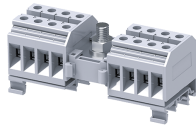


CDB10



Modular Distribution Blocks with 10 sq.mm Output connections and 35 sq.mm Bolt Type Input Connection

The CDB range of distribution blocks is an ideal choice for a simplified distribution system. A bolt in the center of the block provides a connection point for the incoming cable. All the terminals are internally connected and provide multiple connection points for the outgoing wires. A Protective shield effectively shrouds the incoming connection.

TECHNICAL DATA

Rated Voltage	800 V
Rated Current - Input Side	114 A
Rated Current - Output Side	57 A
Tightening Torque - Input Side	6 Nm
Tightening Torque - Output Side	1.2 Nm
Housing Material	Polymide
Product Function	Modular Distribution Blocks
Wire Entry Orientation	Side Entry
Mounting Possibility	DIN 32/DIN 35/DIN 35-15 Rail
Screw Size	M4
Stud Size	M8
Operated by	Screwdriver
Rated Surge Voltage	8 KV
Pollution Degree	3

CONNECTION DATA

Conductor Cross Section Stranded min.	1.5 mm ²
Conductor Cross Section Stranded max.	10 mm ²
Conductor Cross Section Stranded min.- Input Side	10 mm ²
Conductor Cross Section Stranded max. - Input Side	35 mm ²
Conductor Cross Section Stranded min.- Output Side	1.5 mm ²
Conductor Cross Section Stranded max.- Output Side	10 mm ²
Conductor Cross Section AWG/Kcmil min	8 AWG
Conductor Cross Section AWG/Kcmil max	1/0 AWG
Conductor Cross Section Stranded with Ferrule/Lug min	1.5 mm ²
Conductor Cross Section Stranded with Ferrule/Lug max	10 mm ²
2 Conductors with same Cross Section Stranded min	1.5 mm ²
2 Conductor with same Cross Section Stranded max	6 mm ²
2 Conductors with same Cross Section Stranded with TWIN Ferrule/Lug min	1.5 mm ²
2 Conductor with same Cross Section Stranded with TWIN Ferrule/Lug max	6 mm ²
Stripping Length	11 mm
Internal Cylindrical Guage	A6

DIMENSIONS

Height with DIN 32 rail	52.8 mm
Height with DIN 35 x 15 mm rail	55.5 mm
Height with DIN 35 x 7.5 mm rail	47.8 mm
Length	48 mm

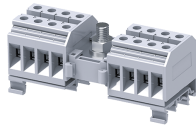
ORDERING INFORMATION

CAT. NO.	DESCRIPTION	STD. PACK
CDB10/2	Grey colour Modular Distribution Terminal Block with 8 outputs of 10 sq.mm	10
CDB10/3	Grey colour Modular Distribution Terminal Block with 12 outputs of 10 sq.mm	10
CDB10/4	Grey colour Modular Distribution Terminal Block with 16 outputs of 10 sq.mm	5

ACCESSORIES

IMAGES	CAT. NO.	DESCRIPTION	STD. PACK
	CA501-1M	Din 32 Rail unslotted 1 meter	50
	CA501-1M-S	Din 32 Rail slotted 1 meter	50
	CA501-2M	Din 32 Rail unslotted 2 meter	50
	CA501-2M-S	Din 32 Rail slotted 2 meter	50
	CA701-1M	Din 35 Rail unslotted 1 meter	50
	CA701-2M	Din 35 Rail unslotted 2 meter	50
	CA701-2M-S	Din 35 Rail slotted 2 meter	50
	CA701-1M-S	Din 35 Rail slotted 1 meter	50
	CA701-15-1M	Din 35 Rail 15 deep unslotted 1 meter	50
	CA701-15-1M-S	Din 35 Rail 15 deep slotted 1 meter	50
	CA701-15-2M	Din 35 Rail 15 deep unslotted 2 meter	50
	CA701-15-2M-S	Din 35 Rail 15 deep slotted 2 meter	50
	CA702	End Clamp in Polyamide 66 suitable for Din 32 / Din 35 / Din 35-15 Rails	50
	CA802	End Clamp in Polyamide suitable for Din 35 / Din 35-15 Rails	50
	CA509/K10	Marking Tag Blank suitable for CTS10U / CGT10U / CGT10N / CHV10U / CTS10USC / STH4 / STH4DT / STH4DTSH / CSC10T Terminal Blocks	100
	SCS0.8/4	Electricians Screwdriver for slotted screws	10

CDB10



connectwell
THE RIGHT CONNECTION

ACCESSORIES

IMAGES	CAT. NO.	DESCRIPTION	STD. PACK
	MC10	MARKER CARD 10MM PITCH WITH 42 TAGS	10

APPROVALS



NOTES

Sum of outgoing currents on either side of the center should not exceed half the maximum permissible incoming current.

Sum of total outgoing currents should not exceed maximum permissible incoming current.

Connection for higher outgoing currents should be done through the terminal nearest to the incoming connection.

This Terminal Blocks are available in Red, Yellow, Blue, Black & Green colours.
2) The Rated current is with the use of copper (Cu) conductor/Wire

RATINGS AS PER STANDARDS

STANDARDS	UL 1059	CSA C.22.2 No:158	IEC/EN60947-7-1
Approvals	UL	CSA	CE
Conductor Cross Section Stranded min.- Input Side	8 AWG	8 AWG	10 mm ²
Conductor Cross Section Stranded max. - Input Side	1/0 AWG	1/0 AWG	35 mm ²
Conductor Cross Section Stranded min.- Output Side	22 AWG	22 AWG	1.5 mm ²
Conductor Cross Section Stranded max.- Output Side	6 AWG	6 AWG	10 mm ²
Rated Voltage	600 V	600 V	800 V
Rated Current - Input Side	130 A	130 A	114 A
Rated Current - Output Side	65 A	65 A	57 A
Tightening Torque - Input Side	53 lb-in	53 lb-in	6 Nm
Tightening Torque - Output Side	14 lb-in	14 lb-in	1.2 Nm