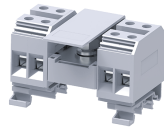


# CDB25



## Modular Distribution Blocks with 25 sq.mm Output connections and 50 sq.mm Bolt Type Input Connection

The CDB range of distribution blocks is an ideal choice for a simplified distribution system. A bolt in the center of the block provides a connection point for the incoming cable. All the terminals are internally connected and provide multiple connection points for the outgoing wires. A Protective shield effectively shrouds the incoming connection.

### TECHNICAL DATA

|                                 |   |
|---------------------------------|---|
| Rated Voltage                   | 800 V   |
| Rated Current - Input Side      | 150 A   |
| Rated Current - Output Side     | 75 A  |
| Tightening Torque - Input Side  | 6 Nm  |
| Tightening Torque - Output Side | 2 Nm  |
| Housing Material                | Polymide  |
| Product Function                | Modular Distribution Blocks with Bolt Type Input Connection |
| Wire Entry Orientation          | Side Entry  |
| Mounting Possibility            | DIN 32/DIN 35/DIN 35-15 Rail                                |
| Screw Size                      | M5  |
| Stud Size                       | M8  |
| Operated by                     | Screwdriver   |
| Rated Surge Voltage             | 8 KV  |
| Pollution Degree                | 3   |

### CONNECTION DATA

|   |                    |
|---|--------------------|
| Conductor Cross Section Stranded min.                                   | 6 mm <sup>2</sup>  |
| Conductor Cross Section Stranded max.                                   | 25 mm <sup>2</sup> |
| Conductor Cross Section Stranded min.- Input Side                       | 10 mm <sup>2</sup> |
| Conductor Cross Section Stranded max. - Input Side                      | 50 mm <sup>2</sup> |
| Conductor Cross Section Stranded min.- Output Side                      | 6 mm <sup>2</sup>  |
| Conductor Cross Section Stranded max.- Output Side                      | 25 mm <sup>2</sup> |
| Conductor Cross Section AWG/Kcmil min                                   | 12 AWG             |
| Conductor Cross Section AWG/Kcmil max                                   | 2/0 AWG            |
| Conductor Cross Section Stranded with Ferrule/Lug min                   | 6 mm <sup>2</sup>  |
| Conductor Cross Section Stranded with Ferrule/Lug max                   | 25 mm <sup>2</sup> |
| 2 Conductors with same Cross Section Stranded min                       | 6 mm <sup>2</sup>  |
| 2 Conductor with same Cross Section Stranded max                        | 16 mm <sup>2</sup> |
| 2 Conductors with same Cross Section Stranded with TWIN Ferrule/Lug min | 6 mm <sup>2</sup>  |
| 2 Conductor with same Cross Section Stranded with TWIN Ferrule/Lug max  | 16 mm <sup>2</sup> |
| Stripping Length  | 14 mm              |
| Internal Cylindrical Guage  | A8                 |

### DIMENSIONS

|                                  |         |
|----------------------------------|---------|
| Height with DIN 32 rail          | 62.3 mm |
| Height with DIN 35 x 15 mm rail  | 64.7 mm |
| Height with DIN 35 x 7.5 mm rail | 57.2 mm |
| Length                           | 49 mm   |
| Width (Thickness)                | mm      |

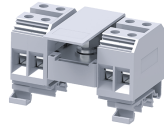
### ORDERING INFORMATION

| CAT. NO. | DESCRIPTION   | STD. PACK |
|----------|---|-----------|
| CDB25/1  | Grey colour Modular Distribution Terminal Block with 4 outputs of 25 sq.mm  | 10        |
| CDB25/2  | Grey colour Modular Distribution Terminal Block with 8 outputs of 25 sq.mm  | 10        |
| CDB25/3  | Grey colour Modular Distribution Terminal Block with 12 outputs of 25 sq.mm | 10        |
| CDB25/4  | Grey colour Modular Distribution Terminal Block with 16 outputs of 25 sq.mm | 5         |

### ACCESSORIES

| IMAGES | CAT. NO.      | DESCRIPTION  | STD. PACK |
|--------|---------------|--|-----------|
|        | CA501-1M      | Din 32 Rail unslotted 1 meter  | 50        |
|        | CA501-1M-S    | Din 32 Rail slotted 1 meter  | 50        |
|        | CA501-2M      | Din 32 Rail unslotted 2 meter  | 50        |
|        | CA501-2M-S    | Din 32 Rail slotted 2 meter  | 50        |
|        | CA701-1M      | Din 35 Rail unslotted 1 meter  | 50        |
|        | CA701-2M      | Din 35 Rail unslotted 2 meter  | 50        |
|        | CA701-2M-S    | Din 35 Rail slotted 2 meter  | 50        |
|        | CA701-1M-S    | Din 35 Rail slotted 1 meter  | 50        |
|        | CA701-15-1M   | Din 35 Rail 15 deep unslotted 1 meter                                    | 50        |
|        | CA701-15-1M-S | Din 35 Rail 15 deep slotted 1 meter                                      | 50        |
|        | CA701-15-2M   | Din 35 Rail 15 deep unslotted 2 meter                                    | 50        |
|        | CA701-15-2M-S | Din 35 Rail 15 deep slotted 2 meter                                      | 50        |
|        | CA702         | End Clamp in Polyamide 66 suitable for Din 32 / Din 35 / Din 35-15 Rails | 50        |
|        | CA802         | End Clamp in Polyamide suitable for Din 35 / Din 35-15 Rails             | 50        |

# CDB25



**connectwell**  
THE RIGHT CONNECTION

### ACCESSORIES

| IMAGES | CAT. NO.  | DESCRIPTION   | STD. PACK |
|--------|-----------|---|-----------|
|        | CA509/K12 | Marking Tag Blank suitable for CTS16U / CTS25UN / CGT16N / CDB25 / CMDB25 / CSC16T / CSCG16T / CY16 / CYG16 Terminal Blocks | 100       |
|        | SCS1/5.5  | Electricians Screwdriver for slotted screws   | 10        |
|        | MC12      | MARKER CARD 12MM PITCH WITH 36 TAGS   | 10        |

### APPROVALS



### NOTES

Sum of outgoing currents on either side of the center should not exceed half the maximum permissible incoming current.

Sum of total outgoing currents should not exceed maximum permissible incoming current.

Connection for higher outgoing currents should be done through the terminal nearest to the incoming connection.

This Terminal Blocks are available in Red, Yellow, Blue, Black & Green colours.  
2) The Rated current is with the use of copper (Cu) conductor/Wire

### RATINGS AS PER STANDARDS

| STANDARDS  | UL 1059  | DIN EN60947-7-1    | CSA C.22.2 No:158 |
|--|----------|--------------------|-------------------|
| Approvals  | UL       | CE                 | CSA               |
| Conductor Cross Section Stranded min.- Input Side  | 6 AWG    | 10 mm <sup>2</sup> | 6 AWG             |
| Conductor Cross Section Stranded max.- Input Side  | 2/0 AWG  | 50 mm <sup>2</sup> | 2/0 AWG           |
| Conductor Cross Section Stranded min.- Output Side | 12 AWG   | 6 mm <sup>2</sup>  | 12 AWG            |
| Conductor Cross Section Stranded max.- Output Side | 2 AWG    | 25 mm <sup>2</sup> | 2 AWG             |
| Rated Voltage                                      | 600 V    | 800 V              | 600 V             |
| Rated Current - Input Side                         | 150 A    | 150 A              | 150 A             |
| Rated Current - Output Side                        | 75 A     | 75 A               | 150 A             |
| Tightening Torque - Input Side                     | 53 lb-in | 6 Nm               | 53 lb-in          |
| Tightening Torque - Output Side                    | 22 lb-in | 2 Nm               | 22 lb-in          |