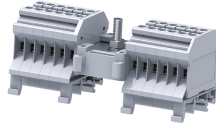


CDB4



Modular Distribution Blocks with 4 sq.mm Output connections and 16 sq.mm Bolt Type Input Connection

The CDB range of distribution blocks is an ideal choice for a simplified distribution system. A bolt in the center of the block provides a connection point for the incoming cable. All the terminals are internally connected and provide multiple connection points for the outgoing wires. A Protective shield effectively shrouds the incoming connection.

TECHNICAL DATA

Rated Voltage	800 V
Rated Current - Input Side	64 A
Rated Current - Output Side	32 A
Tightening Torque - Input Side	2 Nm
Tightening Torque - Output Side	0.5 Nm
Housing Material	Polymide
Standard Colour	Grey
Product Function	Modular Distribution Blocks with Bolt Type Input Connection
Wire Entry Orientation	Side Entry
Mounting Possibility	DIN 32/DIN 35/DIN 35-15 Rail
Screw Size	M3
Stud Size	M5
Operated by	Screwdriver
Rated Surge Voltage	8 KV
Pollution Degree	3

CONNECTION DATA

Conductor Cross Section Stranded min.	0.2 mm ²
Conductor Cross Section Stranded max.	4 mm ²
Conductor Cross Section Stranded min.- Input Side	6 mm ²
Conductor Cross Section Stranded max. - Input Side	16 mm ²
Conductor Cross Section Stranded min.- Output Side	0.2 mm ²
Conductor Cross Section Stranded max.- Output Side	4 mm ²
Conductor Cross Section AWG/Kcmil min	22 AWG
Conductor Cross Section AWG/Kcmil max	10 AWG
Conductor Cross Section Stranded with Ferrule/Lug min	0.2 mm ²
Conductor Cross Section Stranded with Ferrule/Lug max	4 mm ²
2 Conductors with same Cross Section Stranded min	0.2 mm ²
2 Conductor with same Cross Section Stranded max	2.5 mm ²
Conductor Cross Section Solid min	0.2 mm ²
Conductor Cross Section Solid max	4 mm ²
2 Conductors with same Cross Section Stranded with TWIN Ferrule/Lug min	0.2 mm ²
2 Conductor with same Cross Section Stranded with TWIN Ferrule/Lug max	2.5 mm ²
Stripping Length	8 mm

CONNECTION DATA

Internal Cylindrical Gauge	A4
----------------------------	----

DIMENSIONS

Height with DIN 32 rail	51.1 mm
Height with DIN 35 x 15 mm rail	53.7 mm
Height with DIN 35 x 7.5 mm rail	46.2 mm
Length	43 mm

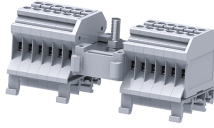
ORDERING INFORMATION

CAT. NO.	DESCRIPTION	STD. PACK
CDB4/1	4 sq.mm Modular Distribution Terminal Block with 4 output in grey colour	10
CDB4/2	4 sq.mm Modular Distribution Terminal Block with 8 output in grey colour	10
CDB4/3	4 sq.mm Modular Distribution Terminal Block with 12 output in grey colour	10
CDB4/4	4 sq.mm Modular Distribution Terminal Block with 16 output in grey colour	10
CDB4/5	4 sq.mm Modular Distribution Terminal Block with 20 output in grey colour	10
CDB4/6	4 sq.mm Modular Distribution Terminal Block with 24 output in grey colour	10

ACCESSORIES

IMAGES	CAT. NO.	DESCRIPTION	STD. PACK
	CA501-1M	Din 32 Rail unslotted 1 meter	50
	CA501-1M-S	Din 32 Rail slotted 1 meter	50
	CA501-2M	Din 32 Rail unslotted 2 meter	50
	CA501-2M-S	Din 32 Rail slotted 2 meter	50
	CA701-1M	Din 35 Rail unslotted 1 meter	50
	CA701-2M	Din 35 Rail unslotted 2 meter	50
	CA701-2M-S	Din 35 Rail slotted 2 meter	50
	CA701-1M-S	Din 35 Rail slotted 1 meter	50
	CA701-15-1M	Din 35 Rail 15 deep unslotted 1 meter	50
	CA701-15-1M-S	Din 35 Rail 15 deep slotted 1 meter	50
	CA701-15-2M	Din 35 Rail 15 deep unslotted 2 meter	50
	CA701-15-2M-S	Din 35 Rail 15 deep slotted 2 meter	50
	CA702	End Clamp in Polyamide 66 suitable for Din 32 / Din 35 / Din 35-15 Rails	50

CDB4



connectwell
THE RIGHT CONNECTION

ACCESSORIES

IMAGES	CAT. NO.	DESCRIPTION	STD. PACK
	CA802	End Clamp in Polyamide suitable for Din 35 / Din 35-15 Rails	50
	CA509/K6	Blank Marking Tag	100
	SCS0.6/3.5	Electricians Screwdriver for slotted screws	10
	MC6	MARKER CARD 6MM PITCH WITH 72 TAGS	10

APPROVALS



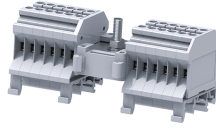
NOTES

- 1) Sum of outgoing currents on either side of the center should not exceed half the maximum permissible incoming current.
- 2) Sum of total outgoing currents should not exceed maximum permissible incoming current.
- 3) Connection for higher outgoing currents should be done through the terminal nearest to the incoming connection.
- 4) This Terminal Blocks are available in Red, Yellow, Blue, Black & Green colours.
- 5) The Rated current is with the use of copper (Cu) conductor/Wire

RATINGS AS PER STANDARDS

STANDARDS	UL 1059	CSA C.22.2 No:158	DIN EN60947-7-1
Approvals	UL	CSA	VDE
Conductor Cross Section Stranded min.- Input Side	10 AWG	10 AWG	6 mm ²
Conductor Cross Section Stranded max. - Input Side	8 AWG	8 AWG	16 mm ²
Conductor Cross Section Stranded min.- Output Side	22 AWG	22 AWG	0.5 mm ²
Conductor Cross Section Stranded max.- Output Side	10 AWG	12 AWG	4 mm ²
Rated Voltage	600 V	600 V	800 V
Rated Current - Input Side	50 A	50 A	64 A
Rated Current - Output Side	35 A	35 A	32 A
Tightening Torque - Input Side	26 lb-in	26 lb-in	2 Nm
Tightening Torque - Output Side	7 lb-in	7 lb-in	0.5 Nm

CDB4



connectwell
THE RIGHT CONNECTION

RATINGS AS PER STANDARDS

STANDARDS	IEC/EN60947-7-1		
Approvals	CE		
Conductor Cross Section Stranded min.- Input Side	6 mm ²		
Conductor Cross Section Stranded max. - Input Side	16 mm ²		
Conductor Cross Section Stranded min.- Output Side	0.2 mm ²		
Conductor Cross Section Stranded max.- Output Side	4 mm ²		
Rated Voltage	800 V		
Rated Current - Input Side	64 A		
Rated Current - Output Side	32 A		
Tightening Torque - Input Side	2 Nm		
Tightening Torque - Output Side	0.5 Nm		