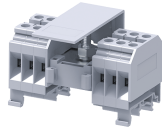


CDB6



Modular Distribution Blocks with 6 sq.mm Output connections and 25 sq.mm Bolt Type Input Connection

The CDB range of distribution blocks is an ideal choice for a simplified distribution system. A bolt in the center of the block provides a connection point for the incoming cable. All the terminals are internally connected and provide multiple connection points for the outgoing wires. A Protective shield effectively shrouds the incoming connection.

TECHNICAL DATA

Rated Voltage	800 V
Rated Current - Input Side	82 A
Rated Current - Output Side	41 A
Tightening Torque - Input Side	3 Nm
Tightening Torque - Output Side	0.8 Nm
Housing Material	Polymide
Product Function	Modular Distribution Blocks with Bolt Type Input Connection
Wire Entry Orientation	Side Entry
Mounting Possibility	DIN 32/DIN 35/DIN 35-15 Rail
Screw Size	M3.5
Stud Size	M6
Operated by	Screwdriver
Rated Surge Voltage	8 KV
Pollution Degree	3

CONNECTION DATA

Conductor Cross Section Stranded min.	1.5 mm ²
Conductor Cross Section Stranded max.	6 mm ²
Conductor Cross Section Stranded min.- Input Side	6 mm ²
Conductor Cross Section Stranded max. - Input Side	25 mm ²
Conductor Cross Section Stranded min.- Output Side	1.5 mm ²
Conductor Cross Section Stranded max.- Output Side	6 mm ²
Conductor Cross Section AWG/Kcmil min	22 AWG
Conductor Cross Section AWG/Kcmil max	8 AWG
Conductor Cross Section Stranded with Ferrule/Lug min	1.5 mm ²
Conductor Cross Section Stranded with Ferrule/Lug max	6 mm ²
2 Conductors with same Cross Section Stranded min	1.5 mm ²
2 Conductor with same Cross Section Stranded max	4 mm ²
Conductor Cross Section Solid min	1.5 mm ²
Conductor Cross Section Solid max	6 mm ²
2 Conductors with same Cross Section Stranded with TWIN Ferrule/Lug min	1.5 mm ²
2 Conductor with same Cross Section Stranded with TWIN Ferrule/Lug max	4 mm ²
Stripping Length	9 mm
Internal Cylindrical Guage	A5

DIMENSIONS

Height with DIN 32 rail	52.8 mm
Height with DIN 35 x 15 mm rail	55.5 mm
Height with DIN 35 x 7.5 mm rail	47.8 mm
Length	48 mm

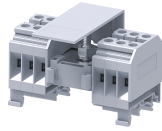
ORDERING INFORMATION

CAT. NO.	DESCRIPTION	STD. PACK
CDB6/1	Grey colour Modular Distribution Terminal Block with 4 outputs of 6 sq.mm	10
CDB6/2	Grey colour Modular Distribution Terminal Block with 8 outputs of 6 sq.mm	10
CDB6/3	Grey colour Modular Distribution Terminal Block with 12 outputs of 6 sq.mm	10
CDB6/3Y	Yellow colour Modular Distribution Terminal Block with 12 outputs of 6 sq.mm	10
CDB6/4	Grey colour Modular Distribution Terminal Block with 16 outputs of 6 sq.mm	10

ACCESSORIES




IMAGES	CAT. NO.	DESCRIPTION	STD. PACK
	CA501-1M	Din 32 Rail unslotted 1 meter	50
	CA501-1M-S	Din 32 Rail slotted 1 meter	50
	CA501-2M	Din 32 Rail unslotted 2 meter	50
	CA501-2M-S	Din 32 Rail slotted 2 meter	50
	CA701-1M	Din 35 Rail unslotted 1 meter	50
	CA701-2M	Din 35 Rail unslotted 2 meter	50
	CA701-2M-S	Din 35 Rail slotted 2 meter	50
	CA701-1M-S	Din 35 Rail slotted 1 meter	50
	CA701-15-1M	Din 35 Rail 15 deep unslotted 1 meter	50
	CA701-15-1M-S	Din 35 Rail 15 deep slotted 1 meter	50
	CA701-15-2M	Din 35 Rail 15 deep unslotted 2 meter	50
	CA701-15-2M-S	Din 35 Rail 15 deep slotted 2 meter	50
	CA702	End Clamp in Polyamide 66 suitable for Din 32 / Din 35 / Din 35-15 Rails	50
	CA802	End Clamp in Polyamide suitable for Din 35 / Din 35-15 Rails	50
	CA509/K8	Marking Tag with Vertical printing.	100

CDB6



connectwell
THE RIGHT CONNECTION

ACCESSORIES

IMAGES	CAT. NO.	DESCRIPTION	STD. PACK
	SWL6	Warning label suitable for 8mm wide terminal block	50
	SCS0.8/4	Electricians Screwdriver for slotted screws	10
	MC8	MARKER CARD 8MM PITCH WITH 48 TAGS	10

APPROVALS



NOTES

Sum of outgoing currents on either side of the center should not exceed half the maximum permissible incoming current.

Sum of total outgoing currents should not exceed maximum permissible incoming current.

Connection for higher outgoing currents should be done through the terminal nearest to the incoming connection.

This Terminal Blocks are available in Red, Yellow, Blue, Black & Green colours.
2) The Rated current is with the use of copper (Cu) conductor/Wire

RATINGS AS PER STANDARDS

STANDARDS	UL 1059	CSA C.22.2 No:158	IEC/EN60947-7-1
Approvals	UL	CSA	CE
Conductor Cross Section Stranded min.- Input Side	10 AWG	10 AWG	6 mm ²
Conductor Cross Section Stranded max. - Input Side	2 AWG	2 AWG	25 mm ²
Conductor Cross Section Stranded min.- Output Side	22 AWG	22 AWG	1.5 mm ²
Conductor Cross Section Stranded max.- Output Side	8 AWG	8 AWG	6 mm ²
Rated Voltage	600 V	600 V	800 V
Rated Current - Input Side	100 A	100 A	82 A
Rated Current - Output Side	50 A	50 A	41 A
Tightening Torque - Input Side	35 lb-in	35 lb-in	3 Nm
Tightening Torque - Output Side	14 lb-in	14 lb-in	0.8 Nm