

DB16



**connectwell**  
THE RIGHT CONNECTION

16 sq.mm Compact Distribution Blocks.

DB16 , these are the distribution blocks are used for single phase distribution system. These blocks can either be mounted on Din rail or can be panel mounted.

**TECHNICAL DATA**

Rated Voltage	1000 V
Rated Current	76 A
Tightening Torque - Input Side	1.2 Nm
Tightening Torque - Output Side	0.8 Nm
Housing Material	Polymide
Product Function	Modular Distribution Blocks
Wire Entry Orientation	Side Entry
Mounting Possibility	DIN 32/DIN 35/DIN 35-15 Rail
Screw Size	M5
Operated by	Screwdriver
Rated Surge Voltage	6 KV
Pollution Degree	3

**CONNECTION DATA**

Conductor Cross Section Stranded min.- Input Side	6 mm <sup>2</sup>
Conductor Cross Section Stranded max. - Input Side	16 mm <sup>2</sup>
Conductor Cross Section Stranded min.- Output Side	2.5 mm <sup>2</sup>
Conductor Cross Section Stranded max.- Output Side	6 mm <sup>2</sup>
Conductor Cross Section Stranded min AWG/KCML.- Input Side	8 AWG
Conductor Cross Section Stranded max AWG/KCML.- Input Side	4 AWG
Stripping Length- Input Side	15 mm
Stripping Length-Output Side	9 mm
Internal Cylindrical Guage	A5

**DIMENSIONS**

Height with DIN 35 x 15 mm rail	57.8 mm
Height with DIN 35 x 7.5 mm rail	50.8 mm
Length	66 mm
Width (Thickness)	27 mm

**ORDERING INFORMATION**

CAT. NO.	DESCRIPTION	STD. PACK
DB16	16 sq.mm Compact Distribution Terminal Block in Grey colour.	10
DB16BU	16 sq.mm Compact Distribution Terminal Block in Blue colour.	10
DB16R	16 sq.mm Compact Distribution Terminal Block in red colour.	10

**ORDERING INFORMATION**

CAT. NO.	DESCRIPTION	STD. PACK
DB16Y	16 sq.mm Compact Distribution Terminal Block in yellow colour.	10

**ACCESSORIES**

IMAGES	CAT. NO.	DESCRIPTION	STD. PACK
	CA701-1M	Din 35 Rail unslotted 1 meter	50
	CA701-2M	Din 35 Rail unslotted 2 meter	50
	CA701-2M-S	Din 35 Rail slotted 2 meter	50
	CA701-1M-S	Din 35 Rail slotted 1 meter	50
	CA701-15-1M	Din 35 Rail 15 deep unslotted 1 meter	50
	CA701-15-1M-S	Din 35 Rail 15 deep slotted 1 meter	50
	CA701-15-2M	Din 35 Rail 15 deep unslotted 2 meter	50
	CA701-15-2M-S	Din 35 Rail 15 deep slotted 2 meter	50
	CA702	End Clamp in Polyamide 66 suitable for Din 32 / Din 35 / Din 35-15 Rails	50
	CA802	End Clamp in Polyamide suitable for Din 35 / Din 35-15 Rails	50
	CA509/K7.5	Blank Marking Tag	100
	SCPH2	Phillips Screwdriver for Phillips Recess screws	10

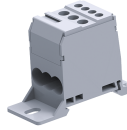
**APPROVALS**



**NOTES**

The Rated current is with the use of copper (Cu) conductor/Wire

DB16



**connectwell**  
THE RIGHT CONNECTION

**RATINGS AS PER STANDARDS**

<b>STANDARDS</b>	<b>UL 1059</b>	<b>IEC/EN60947-7-1</b>	<b>CSA C.22.2 No:158</b>
Approvals	UL	CE	CSA
Conductor Cross Section Stranded min.- Input Side	8 AWG	6 mm <sup>2</sup>	8 AWG
Conductor Cross Section Stranded max. - Input Side	4 AWG	16 mm <sup>2</sup>	4 AWG
Conductor Cross Section Stranded min.- Output Side	14 AWG	2.5 mm <sup>2</sup>	14 AWG
Conductor Cross Section Stranded max.- Output Side	10 AWG	6 mm <sup>2</sup>	10 AWG
Rated Voltage	600 V	1000 V	600 V
Rated Current	80 A	76 A	80 A
Tightening Torque - Input Side	14 lb-in	1.2 Nm	14 lb-in
Tightening Torque - Output Side	7 lb-in	0.8 Nm	7 lb-in