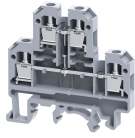


CDL4UED2



4 sq.mm Terminal Blocks with diode circuit - D2 configuration

Double Level Terminal Block are available with arc suppression circuits for contractors and solenoid valves-D.C

TECHNICAL DATA

| | |
|------------------------|--|
| Rated Voltage | 500 V |
| Rated Current | 32 A |
| Tightening Torque | 0.5 Nm |
| Housing Material | Polymide |
| Product Function | With Electronic Components: Diode/Resistor |
| Wire Entry Orientation | Side Entry |
| Mounting Possibility | DIN 32/DIN 35/DIN 35-15 Rail |
| Screw Size | M3 |
| Operated by | Screwdriver |

CONNECTION DATA

| | |
|---|---------------------|
| Conductor Cross Section Stranded min. | 0.2 mm ² |
| Conductor Cross Section Stranded max. | 4 mm ² |
| Conductor Cross Section AWG/Kcmil min | 22 AWG |
| Conductor Cross Section AWG/Kcmil max | 10 AWG |
| Conductor Cross Section Stranded with Ferrule/Lug min | 0.2 mm ² |
| Conductor Cross Section Stranded with Ferrule/Lug max | 4 mm ² |
| 2 Conductors with same Cross Section Stranded min | 0.2 mm ² |
| 2 Conductor with same Cross Section Stranded max | 2.5 mm ² |
| Conductor Cross Section Solid min | 0.2 mm ² |
| Conductor Cross Section Solid max | 6 mm ² |
| Stripping Length | 9 mm |

DIMENSIONS

| | |
|----------------------------------|---------|
| Height with DIN 32 rail | 60.3 mm |
| Height with DIN 35 x 15 mm rail | 63.1 mm |
| Height with DIN 35 x 7.5 mm rail | 55.7 mm |
| Length | 55.5 mm |
| Width (Thickness) | 6 mm |

DIODE SPECIFICATIONS

| | |
|-----------------------|--------|
| Diode Type | 1N4007 |
| Diode Reverse Voltage | 1000 V |
| Diode Forward Current | 1 A |
| Diode Type | 1N4007 |
| Diode Reverse Voltage | 1000 V |
| Diode Forward Current | 1 A |
| Diode Type | 1N4007 |
| Diode Reverse Voltage | 1000 V |

DIODE SPECIFICATIONS

| | |
|-----------------------|--------|
| Diode Forward Current | 1 A |
| Diode Type | 1N4007 |
| Diode Reverse Voltage | 1000 V |
| Diode Forward Current | 1 A |

ORDERING INFORMATION

| CAT. NO. | DESCRIPTION | STD. PACK |
|----------|---|-----------|
| CDL4UED2 | 4 sq.mm Terminal Block with electronic components in Grey colour. | 100 |

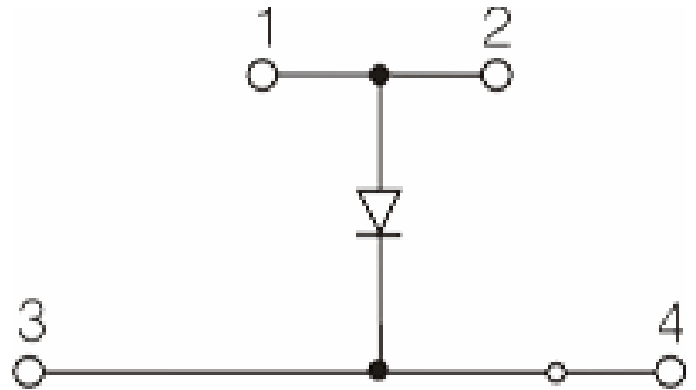
APPROVALS



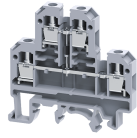
NOTES

The Rated current is with the use of copper (Cu) conductor/Wire

CIRCUIT DIAGRAM



CDL4UED2



connectwell
THE RIGHT CONNECTION

RATINGS AS PER STANDARDS

| STANDARDS | UL 1059 | CSA C.22.2 No:158 | IEC/EN60947-7-1 |
|---------------------------------------|----------------|--------------------------|------------------------|
| Approvals | UL | CSA | CE |
| Conductor Cross Section Stranded min. | 22 AWG | 22 AWG | 0.2 mm ² |
| Conductor Cross Section Stranded max. | 10 AWG | 10 AWG | 4 mm ² |
| Rated Voltage | 600 V | 600 V | 500 V |
| Rated Current | 35 A | 25 A | 32 A |
| Tightening Torque | 7 lb-in | 7 lb-in | 0.5 Nm |