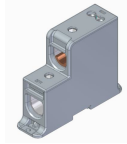


CDB300/35



connectwell
THE RIGHT CONNECTION

CDB300/35 : 300 sq.mm Distribution Terminal Block with 2 Incoming wires 300 sq.mm and 2 Outgoing wires 35 sq.mm

CDB series distribution terminal blocks are preferred for application using wires of large cross section. These terminal block can be easily mounted on Din Rails and with the help of screws can also be mounted on the surface of mounting plate. CDB300/35 Terminal Blocks are designed in conformance to IEC 60947-7-1 and are suitable for use with aluminium and copper wires. These terminal block offers IP-20 shock proof protection.

TECHNICAL DATA

Rated Voltage	1000 V
Rated Current	400 A
Tightening Torque	55 Nm
Housing Material	Polymide
Standard Colour	Grey
Product Function	Feed Through
Wire Entry Orientation	Side Entry
Mounting Possibility	DIN 35/DIN 35-15 Rail
Screw Size	M20
Operated by	Allen Key
Rated Surge Voltage	8 KV
Pollution Degree	3

CONNECTION DATA

Conductor Cross Section Stranded max. - Input Side	300 mm ²
Conductor Cross Section Stranded max.- Output Side	35 mm ²

DIMENSIONS

Height	130 mm
Length	171 mm
Width (Thickness)	45 mm

ORDERING INFORMATION

CAT. NO.	DESCRIPTION	STD. PACK
CDB300/35	300 sq.mm Distribution Terminal Block	1

NOTES

The Rated current is with the use of copper (Cu) conductor/Wire