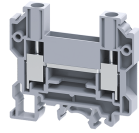


# CDTTUFT



**connectwell**  
THE RIGHT CONNECTION

## 10 sq. mm Feed Through Terminal Blocks

10 sq.mm Feed Through Terminal Blocks are the most Versatile terminals for control, Automation, Instrumentation and Power Distribution applications. A specially designed flexible foot enable easy mounting and dismounting from the Din rail with the help of screw driver. These Terminal Blocks have marker holding recesses to accept marking tags for circuit identification. Cross connection can be achieved with the aid of shorting links / sleeves & screws.

### TECHNICAL DATA

Rated Voltage	800 V
Rated Current	57 A
Tightening Torque	1.2 Nm
Housing Material	Polymide
Product Function	Feed Through
Wire Entry Orientation	Side
Mounting Possibility	DIN 32/DIN 35/DIN 35-15 Rail
Operated by	Screw Driver
Rated Surge Voltage	8 KV
Pollution Degree	3

### CONNECTION DATA

Conductor Cross Section Stranded min.	1.5 mm <sup>2</sup>
Conductor Cross Section Stranded max.	10 mm <sup>2</sup>
Conductor Cross Section AWG/Kcmil min	16 mm <sup>2</sup>
Conductor Cross Section AWG/Kcmil max	8 mm <sup>2</sup>
Conductor Cross Section Stranded with Ferrule/Lug min	1.5 mm <sup>2</sup>
Conductor Cross Section Stranded with Ferrule/Lug max	10 mm <sup>2</sup>
2 Conductors with same Cross Section Stranded min	1.5 mm <sup>2</sup>
2 Conductor with same Cross Section Stranded max	4 mm <sup>2</sup>
Conductor Cross Section Solid min	1.5 mm <sup>2</sup>
Conductor Cross Section Solid max	10 mm <sup>2</sup>
2 Conductors with same Cross Section Stranded with TWIN Ferrule/Lug min	1.5 mm <sup>2</sup>
2 Conductor with same Cross Section Stranded with TWIN Ferrule/Lug max	4 mm <sup>2</sup>
Stripping Length	12 mm

### DIMENSIONS

Height with DIN 32 rail	63.7 mm
Height with DIN 35 x 15 mm rail	65.7 mm
Height with DIN 35 x 7.5 mm rail	58.7 mm
Length	63 mm
Width (Thickness)	8 mm

### ORDERING INFORMATION

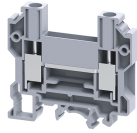
CAT. NO.	DESCRIPTION	STD. PACK
CDTTUFT	4 sq.mm Feed Through Terminal Block in Grey	50

### ORDERING INFORMATION

CAT. NO.	DESCRIPTION	STD. PACK
	colour	
CDTTUFTBK	10 sq.mm Feed Through Terminal Block in Black colour	50
CDTTUFTBU	10 sq.mm Feed Through Terminal Block in Blue colour	50
CDTTUFTGN	10 sq.mm Feed Through Terminal Block in Green colour	50
CDTTUFTR	10 sq.mm Feed Through Terminal Block in Red colour	50
CDTTUFTY	10 sq.mm Feed Through Terminal Block in Yellow colour	50

### ACCESSORIES

IMAGES	CAT. NO.	DESCRIPTION	STD. PACK
	CA501-1M	Din 32 Rail unslotted 1 meter	50
	CA501-1M-S	Din 32 Rail slotted 1 meter	50
	CA501-2M	Din 32 Rail unslotted 2 meter	50
	CA501-2M-S	Din 32 Rail slotted 2 meter	50
	CA701-1M	Din 35 Rail unslotted 1 meter	50
	CA701-2M	Din 35 Rail unslotted 2 meter	50
	CA701-2M-S	Din 35 Rail slotted 2 meter	50
	CA701-1M-S	Din 35 Rail slotted 1 meter	50
	CA701-15-1M	Din 35 Rail 15 deep unslotted 1 meter	50
	CA701-15-1M-S	Din 35 Rail 15 deep slotted 1 meter	50
	CA701-15-2M	Din 35 Rail 15 deep unslotted 2 meter	50
	CA701-15-2M-S	Din 35 Rail 15 deep slotted 2 meter	50
	CA103	EndClamp in Polyamide suitable for Din 35/Din 35-15 rails	50
	CA202	End Clamp in Polyamide suitable for Din 35 / Din 35-15 Rails	25
	CA702	End Clamp in Polyamide 66 suitable for Din 32 / Din 35 / Din 35-15 Rails	50
	EPCDTTU	End Plate in Grey colour suitable	50



**ACCESSORIES**

IMAGES	CAT. NO.	DESCRIPTION	STD. PACK
	CA710/2	External Comb Type Shorting Link available in 2 Pole	100
	CA710/3	External Comb Type Shorting Link available in 3 Pole	50
	CA710/4	External Comb Type Shorting Link available in 4 Pole	50
	CA710/10	External Comb Type Shorting Link available in 10 Pole	20
	CA509/K8	Marking Tag with Vertical printing.	100
	SCS1/5.5	Electricians Screwdriver for slotted screws	10
	MC8	MARKER CARD 8MM PITCH WITH 48 TAGS	10

**APPROVALS**



**NOTES**

The Rated current is with the use of copper (Cu) conductor/Wire

**RATINGS AS PER STANDARDS**

STANDARDS	UL 1059	CSA C.22.2 No:158	IEC/EN60947-7-1
Approvals	UL	CSA	CE
Conductor Cross Section Stranded min.	16 AWG	16 AWG	1.5 mm <sup>2</sup>
Conductor Cross Section Stranded max.	8 AWG	8 AWG	10 mm <sup>2</sup>
Rated Voltage	600 V	600 V	800 V
Rated Current	41 A	41 A	57 A
Tightening Torque	14 lb-in	14 lb-in	1.2 Nm