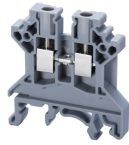


CR10



10 sq.mm Radiation Resistance Terminal Block

10 sq.mm Feed Through Terminal Blocks are the most Versatile terminals for control, Automation, Instrumentation and Power Distribution applications. A specially designed flexible foot enable easy mounting and dismounting from the Din rail with the help of screw driver. These Terminal Blocks have marker holding recesses to accept marking tags for circuit identification. Cross connection can be achieved with the aid of shorting links / sleeves & screws. Radiation Rsesiance Terminal Blocks. Peak Material for housing.

TECHNICAL DATA

Rated Voltage	1000 V
Rated Current	57 A
Tightening Torque	1.2 Nm
Material Group	Peak Material
Standard Colour	Beige
Product Function	Feed Through
Wire Entry Orientation	Side Entry
Mounting Possibility	DIN 32/DIN 35/DIN 35-15 Rail
Operated by	Screwdriver
Rated Surge Voltage	8 KV
Pollution Degree	3

CONNECTION DATA

Conductor Cross Section Stranded min.	0.5 mm ²
Conductor Cross Section Stranded max.	10 mm ²
Conductor Cross Section AWG/Kcmil min	16 AWG
Conductor Cross Section AWG/Kcmil max	6 AWG
Conductor Cross Section Stranded with Ferrule/Lug min	0.5 mm ²
Conductor Cross Section Stranded with Ferrule/Lug max	10 mm ²
2 Conductors with same Cross Section Stranded min	0.5 mm ²
2 Conductor with same Cross Section Stranded max	6 mm ²
Conductor Cross Section Solid min	0.2 mm ²
Conductor Cross Section Solid max	16 mm ²
2 Conductors with same Cross Section Stranded with TWIN Ferrule/Lug min	0.5 mm ²
2 Conductor with same Cross Section Stranded with TWIN Ferrule/Lug max	6 mm ²
Stripping Length	11 mm
Internal Cylindrical Guage	A6

DIMENSIONS

Height with DIN 32 rail	52.8 mm
Height with DIN 35 x 15 mm rail	55.5 mm
Height with DIN 35 x 7.5 mm rail	47.8 mm
Length	43 mm
Width (Thickness)	10 mm

ORDERING INFORMATION

CAT. NO.	DESCRIPTION	STD. PACK
CR10	10 sq.mm Radiation Resistance Terminal Block	100

ACCESSORIES

IMAGES	CAT. NO.	DESCRIPTION	STD. PACK
	CA501-1M	Din 32 Rail unslotted 1 meter	50
	CA501-1M-S	Din 32 Rail slotted 1 meter	50
	CA501-2M	Din 32 Rail unslotted 2 meter	50
	CA501-2M-S	Din 32 Rail slotted 2 meter	50

	CA701-1M	Din 35 Rail unslotted 1 meter	50
	CA701-2M	Din 35 Rail unslotted 2 meter	50
	CA701-2M-S	Din 35 Rail slotted 2 meter	50
	CA701-1M-S	Din 35 Rail slotted 1 meter	50

	CA701-15-1M	Din 35 Rail 15 deep unslotted 1 meter	50
	CA701-15-1M-S	Din 35 Rail 15 deep slotted 1 meter	50
	CA701-15-2M	Din 35 Rail 15 deep unslotted 2 meter	50
	CA701-15-2M-S	Din 35 Rail 15 deep slotted 2 meter	50

	CR702	End Clamp in Peak Material suitable for Din 32 / Din 35 / Din 35-15 Rails	50
--	-------	---	----

	CA509/K10	Marking Tag Blank suitable for CTS10U / CGT10U / CGT10N / CHV10U / CTS10USC / STH4 / STH4DT / STH4DTSH / CSC10T Terminal Blocks	100
--	-----------	---	-----

	EPCR10	Radiation Resistance End Plate	50
--	--------	--------------------------------	----

	MC10	MARKER CARD 10MM PITCH WITH 42 TAGS	10
--	------	-------------------------------------	----

APPROVALS



NOTES

The Rated current is with the use of copper (Cu) conductor/Wire

CR10



connectwell
THE RIGHT CONNECTION

RATINGS AS PER STANDARDS

STANDARDS	UL 1059	CSA C.22.2 No:158	IEC/EN60947-7-1
Approvals	UL	CSA	CE
Conductor Cross Section Stranded min.	16 AWG	16 AWG	0.5 mm ²
Conductor Cross Section Stranded max.	6 AWG	6 AWG	10 mm ²
Rated Voltage	600 V	600 V	1000 V
Rated Current	65 A	65 A	57 A
Tightening Torque	14 lb-in	14 lb-in	1.2 Nm