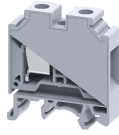


# CTS16U



## 16 sq.mm Standard Feed Through Terminal Blocks

16 sq.mm Feed Through Terminal Blocks are the most Versatile terminals for control, Automation, Instrumentation and Power Distribution applications. A specially designed flexible foot enable easy mounting and dismounting from the Din rail with the help of screw driver. These Terminal Blocks have marker holding recesses to accept marking tags for circuit identification. Cross connection can be achieved with the aid of shorting links / sleeves & screws.

### TECHNICAL DATA

Rated Voltage	1000 V
Rated Current	76 A
Tightening Torque	1.2 Nm
Housing Material	Polymide
Product Function	Feed Through
Wire Entry Orientation	Side Entry
Mounting Possibility	DIN 32/DIN 35/DIN 35-15 Rail
Screw Size	M4
Operated by	Screwdriver
Rated Surge Voltage	8 KV
Pollution Degree	3

### CONNECTION DATA

Conductor Cross Section Stranded min.	0.2 mm <sup>2</sup>
Conductor Cross Section Stranded max.	16 mm <sup>2</sup>
Conductor Cross Section AWG/Kcmil min	20 AWG
Conductor Cross Section AWG/Kcmil max	4 AWG
Conductor Cross Section Stranded with Ferrule/Lug min	0.2 mm <sup>2</sup>
Conductor Cross Section Stranded with Ferrule/Lug max	16 mm <sup>2</sup>
2 Conductors with same Cross Section Stranded min	0.2 mm <sup>2</sup>
2 Conductor with same Cross Section Stranded max	10 mm <sup>2</sup>
2 Conductors with same Cross Section Stranded with TWIN Ferrule/Lug min	0.2 mm <sup>2</sup>
2 Conductor with same Cross Section Stranded with TWIN Ferrule/Lug max	10 mm <sup>2</sup>
Stripping Length	12 mm
Internal Cylindrical Guage	A7

### DIMENSIONS

Height with DIN 32 rail	52.8 mm
Height with DIN 35 x 15 mm rail	55.5 mm
Height with DIN 35 x 7.5 mm rail	47.8 mm
Length	43 mm
Width (Thickness)	12 mm

### ORDERING INFORMATION

CAT. NO.	DESCRIPTION	STD. PACK
CTS16U	16 sq.mm Feed Through Terminal Block in Grey	50

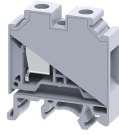
### ORDERING INFORMATION

CAT. NO.	DESCRIPTION	STD. PACK
	colour	
CTS16UR	16 sq.mm Feed Through Terminal Block in Red colour	50
CTS16UY	16 sq.mm Feed Through Terminal Block in Yellow colour	50
CTS16UBU	16 sq.mm Feed Through Terminal Block in Blue colour	50
CTS16UGN	16 sq.mm Feed Through Terminal Block in Green colour	50
CTS16UBK	16 sq.mm Feed Through Terminal Block in Black colour	50

### ACCESSORIES

IMAGES	CAT. NO.	DESCRIPTION	STD. PACK
	CA501-1M	Din 32 Rail unslotted 1 meter	50
	CA501-1M-S	Din 32 Rail slotted 1 meter	50
	CA501-2M	Din 32 Rail unslotted 2 meter	50
	CA501-2M-S	Din 32 Rail slotted 2 meter	50
	CA701-1M	Din 35 Rail unslotted 1 meter	50
	CA701-2M	Din 35 Rail unslotted 2 meter	50
	CA701-2M-S	Din 35 Rail slotted 2 meter	50
	CA701-1M-S	Din 35 Rail slotted 1 meter	50
	CA701-15-1M	Din 35 Rail 15 deep unslotted 1 meter	50
	CA701-15-1M-S	Din 35 Rail 15 deep slotted 1 meter	50
	CA701-15-2M	Din 35 Rail 15 deep unslotted 2 meter	50
	CA701-15-2M-S	Din 35 Rail 15 deep slotted 2 meter	50
	CA702	End Clamp in Polyamide 66 suitable for Din 32 / Din 35 / Din 35-15 Rails	50
	CA802	End Clamp in Polyamide suitable for Din 35 / Din 35-15 Rails	50
	SP6/10U	Separator Plate in Grey colour	100

CTS16U



**connectwell**  
THE RIGHT CONNECTION

**ACCESSORIES**

IMAGES	CAT. NO.	DESCRIPTION	STD. PACK
	CA751/2	Pre assembled Shorting Link for 2 way shorting.	50
	CA751/3	Pre assembled Shorting Link for 3 way shorting.	50
	CA751/4	Pre assembled Shorting Link for 4 way shorting.	50
	CA751/10	Pre assembled Shorting Link for 10 way shorting.	10
	CA761/2	Insulated Pre assembled Shorting Link for 2 way shorting	50
	CA761/3	Insulated Pre assembled Shorting Link for 3 way shorting	50
	CA761/4	Insulated Pre assembled Shorting Link for 4 way shorting	50
	CA761/10	Insulated Pre assembled Shorting Link for 10 way shorting	10
	CA703/8	Permanent Shorting Link for 2 way shorting	100
	CA704/8	Permanent Shorting Link for 3 way shorting	100
	CA705/8	Permanent Shorting Link for 4 way shorting	100
	CA739/10	Permanent Shorting Link for 10 way shorting	100
	CA707/S/Q/1	Shorting Sleeve and Screw	100
	CA509/K12	Marking Tag Blank suitable for CTS16U / CTS25UN / CGT16N / CDB25 / CMDB25 / CSC16T / CSCG16T / CY16 / CYG16 Terminal Blocks	100
	CA707/TS/05	Test Socket suitable for CTS6U / CTS10U Terminal Blocks	100
	SCS1/5.5	Electricians Screwdriver for slotted screws	10
	MC12	MARKER CARD 12MM PITCH WITH 36 TAGS	10

**APPROVALS**



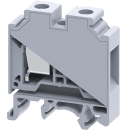
**NOTES**

The Rated current is with the use of copper (Cu) conductor/Wire

**RATINGS AS PER STANDARDS**

STANDARDS	UL 1059	CSA C.22.2 No:158	DIN EN60947-7-1
-----------	---------	-------------------	-----------------

CTS16U



**connectwell**  
THE RIGHT CONNECTION

**RATINGS AS PER STANDARDS**

	UL	CSA	VDE
Approvals	UL	CSA	VDE
Conductor Cross Section Stranded min.	20 AWG	22 AWG	2.5 mm <sup>2</sup>
Conductor Cross Section Stranded max.	4 AWG	6 AWG	16 mm <sup>2</sup>
Rated Voltage	600 V	600 V	800 V
Rated Current	85 A	70 A	76 A
Tightening Torque	14 lb-in	14 lb-in	2 Nm
<b>STANDARDS</b>	<b>IEC/EN60947-7-1</b>	<b>EN60079-7</b>	<b>EN60079-7</b>
Approvals	CE	ATEX	ATEX-IECex
Conductor Cross Section Stranded min.	0.2 mm <sup>2</sup>	2.5 mm <sup>2</sup>	2.5 mm <sup>2</sup>
Conductor Cross Section Stranded max.	16 mm <sup>2</sup>	16 mm <sup>2</sup>	16 mm <sup>2</sup>
Rated Voltage	1000 V	690 V	690 V
Rated Current	76 A	66 A	66 A
Tightening Torque	1.2 Nm	2 Nm	2 Nm
Operating Temperature Range		-40 to +85 °C	