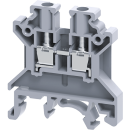


CTS4UNP



4 sq.mm Feed Through Philips Head screw Terminal Blocks

4 sq.mm Feed Through Terminal Blocks are the most Versatile terminals for control, Automation, Instrumentation and Power Distribution applications. A specially designed flexible foot enable easy mounting and dismounting from the Din rail with the help of screw driver. These Terminal Blocks have marker holding recesses to accept marking tags for circuit identification. Cross connection can be achieved with the aid of shorting links / sleeves & screws.

TECHNICAL DATA

Rated Voltage	1000 V
Rated Current	32 A
Tightening Torque	0.5 Nm
Housing Material	Polymide
Standard Colour	Grey
Product Function	Feed Through
Wire Entry Orientation	Side Entry
Mounting Possibility	DIN 32/DIN 35/DIN 35-15 Rail
Screw Size	M3
Operated by	Screwdriver
Rated Surge Voltage	8 KV
Pollution Degree	3

CONNECTION DATA

Conductor Cross Section Stranded min.	0.2 mm ²
Conductor Cross Section Stranded max.	4 mm ²
Conductor Cross Section AWG/Kcmil min	22 AWG
Conductor Cross Section AWG/Kcmil max	10 AWG
Conductor Cross Section Stranded with Ferrule/Lug min	0.2 mm ²
Conductor Cross Section Stranded with Ferrule/Lug max	4 mm ²
2 Conductors with same Cross Section Stranded min	0.2 mm ²
2 Conductor with same Cross Section Stranded max	2.5 mm ²
Conductor Cross Section Solid min	0.2 mm ²
Conductor Cross Section Solid max	6 mm ²
2 Conductors with same Cross Section Stranded with TWIN Ferrule/Lug min	0.2 mm ²
2 Conductor with same Cross Section Stranded with TWIN Ferrule/Lug max	2.5 mm ²
Stripping Length	9 mm
Internal Cylindrical Guage	A4

DIMENSIONS

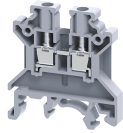
Height with DIN 32 rail	51.1 mm
Height with DIN 35 x 15 mm rail	53.7 mm
Height with DIN 35 x 7.5 mm rail	46.2 mm
Length	43 mm
Width (Thickness)	6 mm

ORDERING INFORMATION

CAT. NO.	DESCRIPTION	STD. PACK
CTS4UNP	4 sq.mm Feed Through Philips Head screw Terminal block in Grey colour	100

ACCESSORIES

IMAGES	CAT. NO.	DESCRIPTION	STD. PACK
	CA501-1M	Din 32 Rail unslotted 1 meter	50
	CA501-1M-S	Din 32 Rail slotted 1 meter	50
	CA501-2M	Din 32 Rail unslotted 2 meter	50
	CA501-2M-S	Din 32 Rail slotted 2 meter	50
	CA701-1M	Din 35 Rail unslotted 1 meter	50
	CA701-2M	Din 35 Rail unslotted 2 meter	50
	CA701-2M-S	Din 35 Rail slotted 2 meter	50
	CA701-1M-S	Din 35 Rail slotted 1 meter	50
	CA701-15-1M	Din 35 Rail 15 deep unslotted 1 meter	50
	CA701-15-1M-S	Din 35 Rail 15 deep slotted 1 meter	50
	CA701-15-2M	Din 35 Rail 15 deep unslotted 2 meter	50
	CA701-15-2M-S	Din 35 Rail 15 deep slotted 2 meter	50
	CA702	End Clamp in Polyamide 66 suitable for Din 32 / Din 35 / Din 35-15 Rails	50
	CA802	End Clamp in Polyamide suitable for Din 35 / Din 35-15 Rails	50
	EP2.5/4UN	End Plate in Grey Colour	50
	EP2.5/4UNY	End Plate in Yellow Colour	50
	EP2.5/4UNBU	End Plate in Blue Colour	50
	EP2.5/4UNR	End Plate in Red Colour	50
	PP2.5/4UN	Partition Plate in Grey colour	50
	SP2.5/4UN	Separator Plate in Grey colour	100



ACCESSORIES

IMAGES	CAT. NO.	DESCRIPTION	STD. PACK
	CA722/2	Pre Assembled Shorting Link assemblies with 2 poles	100
	CA722/3	Pre Assembled Shorting Links assemblies with 3 poles	100
	CA722/4	Pre Assembled Shorting Links assemblies with 4 poles	100
	CA722/5	Pre Assembled Shorting Links assemblies with 5 poles	100
	CA722/10	Pre Assembled Shorting Links assemblies with 10 poles	10
	CA722/100	Pre Assembled Shorting Links assemblies with 100 poles	10

	CA742/2	Insulated Pre assembled Shorting Link for 2 way shorting	100
	CA742/3	Insulated Pre assembled Shorting Link for 3 way shorting	100
	CA742/4	Insulated Pre assembled Shorting Link for 4 way shorting	100
	CA742/10	Insulated Pre assembled Shorting Link for 10 way shorting	10
	CA742/100	Insulated Pre assembled Shorting Link for 100 way shorting	10

	CA703/1	Permanent Shorting Link for 2 way shorting	100
	CA704/1	Permanent Shorting Link for 3 way shorting	100
	CA705/1	Permanent Shorting Link for 4 way shorting	100
	CA732/10	Permanent Shorting Link for 10 way shorting	100
	CA732/10-A	Permanent Shorting Link (Breakable) for 10 way shorting	100
	CA732/100	Permanent Shorting Link for 100 way shorting	100

	CA707/S/Q/01	Shorting Sleeve and Screw	100
--	--------------	---------------------------	-----

	CA706/1	Removable Shorting link suitable for CTS2.5UE / CTS4UN / CMT4	100
--	---------	---	-----

	CA707/L/Q/01	Long Shorting Sleeves and Screw	100
--	--------------	---------------------------------	-----

	CA509/K6	Blank Marking Tag	100
--	----------	-------------------	-----

	SWL4	Warning label suitable for 6mm wide terminal block	50
--	------	--	----

	CA707/TS/01	Test Socket Suitable for CTS2.5UN / CTS2.5UE / CTS4UN / CTC4U / CMB4 / CTLG2.5 / CTL2.5U / CTL2.5UH / ODL4U / ODL4UA / CDLG2.5 / CMC1-2 / CMC2-2 Terminal Blocks.	100
--	-------------	---	-----

	SCS0.6/3.5	Electricians Screwdriver for slotted screws	10
--	------------	---	----

ACCESSORIES

IMAGES	CAT. NO.	DESCRIPTION	STD. PACK
	CA713/2	External Comb Type Shorting Link available in 2 Pole	100
	CA713/3	External Comb Type Shorting Link available in 3 Pole	100
	CA713/4	External Comb Type Shorting Link available in 4 Pole	100
	CA713/10	External Comb Type Shorting Link available in 10 Pole	20

	MC6	MARKER CARD 6MM PITCH WITH 72 TAGS	10
--	-----	------------------------------------	----

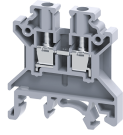
APPROVALS



NOTES

The Rated current is with the use of copper (Cu) conductor/Wire

CTS4UNP



connectwell
THE RIGHT CONNECTION

RATINGS AS PER STANDARDS

STANDARDS	UL 1059	CSA C.22.2 No:158	IEC/EN60947-7-1
Approvals	UL	CSA	CE
Conductor Cross Section Stranded min.	22 AWG	22 AWG	0.2 mm ²
Conductor Cross Section Stranded max.	10 AWG	10 AWG	4 mm ²
Rated Voltage	600 V	600 V	1000 V
Rated Current	40 A	40 A	32 A
Tightening Torque	7 lb-in	7 lb-in	0.5 Nm