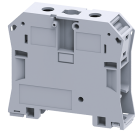


# CTS50/70N



**connectwell**  
THE RIGHT CONNECTION

## 50/70 sq.mm Feed Through Terminal Blocks with Slotted Screws

CTS50/70N Feed Through Terminal Blocks are the most Versatile terminals for control, Automation, Instrumentation and Power Distribution applications. A specially designed flexible foot enable easy mounting and dismounting from the Din rail with the help of screw driver. These Terminal Blocks have marker holding recesses to accept marking tags for circuit identification. Cross connection can be achieved with the aid of shorting links / sleeves & screws.

### TECHNICAL DATA

Rated Voltage	1000 V
Rated Current	192 A
Tightening Torque	3 Nm
Housing Material	Polymide
Product Function	Feed Through
Wire Entry Orientation	Side Entry
Mounting Possibility	DIN 35/DIN 35-15 Rail
Screw Size	M6
Operated by	Screwdriver
Rated Surge Voltage	8 KV
Pollution Degree	3

### CONNECTION DATA

Conductor Cross Section Stranded min.	10 mm <sup>2</sup>
Conductor Cross Section Stranded max.	70 mm <sup>2</sup>
Conductor Cross Section AWG/Kcmil min	8 AWG
Conductor Cross Section AWG/Kcmil max	2/0 AWG
Conductor Cross Section Stranded with Ferrule/Lug min	10 mm <sup>2</sup>
Conductor Cross Section Stranded with Ferrule/Lug max	70 mm <sup>2</sup>
2 Conductors with same Cross Section Stranded min	10 mm <sup>2</sup>
2 Conductor with same Cross Section Stranded max	35 mm <sup>2</sup>
Stripping Length	22 mm
Internal Cylindrical Guage	A10

### DIMENSIONS

Height with DIN 35 x 15 mm rail	78.1 mm
Height with DIN 35 x 7.5 mm rail	71.1 mm
Length	77.3 mm
Width (Thickness)	20.5 mm

### ORDERING INFORMATION

CAT. NO.	DESCRIPTION	STD. PACK
CTS50/70N	70 sq.mm Feed Through Terminal Block in Grey colour	20
CTS50/70NR	70 sq.mm Feed Through Terminal Block in Red colour	20
CTS50/70NY	70 sq.mm Feed Through Terminal Block in Yellow colour	20

### ORDERING INFORMATION

CAT. NO.	DESCRIPTION	STD. PACK
CTS50/70NBU	70 sq.mm Feed Through Terminal Block in Blue colour	20
CTS50/70NBK	70 sq.mm Feed Through Terminal Block in Black colour	20
CTS50/70NGN	70 sq.mm Feed Through Terminal Block in Green colour	20

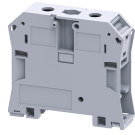
### ACCESSORIES

IMAGES	CAT. NO.	DESCRIPTION	STD. PACK
	CA701-1M	Din 35 Rail unslotted 1 meter	50
	CA701-2M	Din 35 Rail unslotted 2 meter	50
	CA701-2M-S	Din 35 Rail slotted 2 meter	50
	CA701-1M-S	Din 35 Rail slotted 1 meter	50
	CA701-15-1M	Din 35 Rail 15 deep unslotted 1 meter	50
	CA701-15-1M-S	Din 35 Rail 15 deep slotted 1 meter	50
	CA701-15-2M	Din 35 Rail 15 deep unslotted 2 meter	50
	CA701-15-2M-S	Din 35 Rail 15 deep slotted 2 meter	50
	CA102	End Clamp in Polyamide suitable for Din32 / Din35 / Din35-15 Rails	50
	CA202	End Clamp in Polyamide suitable for Din 35 / Din 35-15 Rails	25
	CA628/2	Pre Assembled Shorting Link assemblies with 2 poles	10
	CA628/3	Pre Assembled Shorting Link assemblies with 3 poles	10
	AUX6	Auxiliary Terminal Block in Polyamide suitable for CTS50/70N / CTS95/120N	10
	CA509/K16	Marking Tag Blank suitable for CTS35UNA / CGT35U Terminal Blocks	100
	MC16	MARKER CARD 16MM PITCH WITH 24 TAGS	10

### APPROVALS



CTS50/70N



**connectwell**  
THE RIGHT CONNECTION

**NOTES**

The Rated current is with the use of copper (Cu) conductor/Wire

**RATINGS AS PER STANDARDS**

<b>STANDARDS</b>	<b>IEC/EN60947-7-1</b>	<b>UL 1059</b>	<b>CSA C.22.2 No:158</b>
Approvals	CE	UL	CSA
Conductor Cross Section Stranded min.	10 mm <sup>2</sup>	8 AWG	8 AWG
Conductor Cross Section Stranded max.	70 mm <sup>2</sup>	2/0 AWG	2/0 AWG
Rated Voltage	1000 V	1000 V	1000 V
Rated Current	192 A	175 A	175 A
Tightening Torque	3 Nm	38 lb-in	38 lb-in