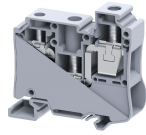


CLP35/2A



35 sq.mm Multiple Connection Terminal Blocks with Allen Screw with 3 connection points.

These blocks are used to connect multiple wires in single Terminal Block, thereby eliminating reliability problems encountered when connecting multiple wires in a single clamp. This can be used for the street lighting poles application.

TECHNICAL DATA

Rated Voltage	600 V
Rated Current - Input Side	115 A
Rated Current - Output Side	75 A
Tightening Torque - Input Side	2.5 Nm
Tightening Torque - Output Side	1.2 Nm
Housing Material	Polymide
Standard Colour	Grey
Product Function	Multiple Connection
Wire Entry Orientation	Side Entry
Mounting Possibility	DIN 35/DIN 35-15 Rail
Operated by	Screwdriver
Rated Surge Voltage	8 KV
Pollution Degree	3

CONNECTION DATA

Conductor Cross Section Stranded min.- Input Side	4 mm ²
Conductor Cross Section Stranded max. - Input Side	35 mm ²
Conductor Cross Section Stranded min.- Output Side	4 mm ²
Conductor Cross Section Stranded min.- Output Side	0.2 mm ²
Conductor Cross Section Stranded max.- Output Side	35 mm ²
Conductor Cross Section Stranded max.- Output Side	10 mm ²
Conductor Cross Section Stranded min AWG/KCML.- Input Side	12 AWG
Conductor Cross Section Stranded max AWG/KCML.- Input Side	2 AWG
Internal Cylindrical Guage	A4

DIMENSIONS

Height with DIN 35 x 15 mm rail	73.65 mm
Height with DIN 35 x 7.5 mm rail	66.15 mm
Length	66.75 mm
Width (Thickness)	16 mm

ORDERING INFORMATION

CAT. NO.	DESCRIPTION	STD. PACK
CLP35/2A	35 sq.mm 3 Wire Feed Through Terminal Block with Allen Screw in Grey colour	20

ACCESSORIES

IMAGES	CAT. NO.	DESCRIPTION	STD. PACK
	CA701-1M	Din 35 Rail unslotted 1 meter	50
	CA701-2M	Din 35 Rail unslotted 2 meter	50
	CA701-2M-S	Din 35 Rail slotted 2 meter	50
	CA701-1M-S	Din 35 Rail slotted 1 meter	50
	CA701-15-1M	Din 35 Rail 15 deep unslotted 1 meter	50
	CA701-15-1M-S	Din 35 Rail 15 deep slotted 1 meter	50
	CA701-15-2M	Din 35 Rail 15 deep unslotted 2 meter	50
	CA701-15-2M-S	Din 35 Rail 15 deep slotted 2 meter	50
	CA702	End Clamp in Polyamide 66 suitable for Din 32 / Din 35 / Din 35-15 Rails	50
	CA802	End Clamp in Polyamide suitable for Din 35 / Din 35-15 Rails	50
	CA509/K16	Marking Tag Blank suitable for CTS35UNA / CGT35U Terminal Blocks	100
	SCS1/5.5	Electricians Screwdriver for slotted screws	10
	MC16	MARKER CARD 16MM PITCH WITH 24 TAGS	10

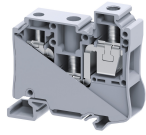
APPROVALS



NOTES

The Rated current is with the use of copper (Cu) conductor/Wire

CLP35/2A



connectwell
THE RIGHT CONNECTION

RATINGS AS PER STANDARDS

STANDARDS	IEC/EN60947-7-1	UL 1059
Conductor Cross Section Stranded min.- Input Side	4 mm ²	12 AWG
Conductor Cross Section Stranded max. - Input Side	35 mm ²	2 AWG
Conductor Cross Section Stranded min.- Output Side	0.5 mm ²	20 AWG
Conductor Cross Section Stranded max.- Output Side	16 mm ²	4 AWG
Rated Voltage	1000 V	600 V
Rated Current - Input Side	115 A	115 A
Rated Current - Output Side	76 A	75 A
Tightening Torque - Input Side	2.5 Nm	25 lb-in
Tightening Torque - Output Side	1.2 Nm	14 lb-in