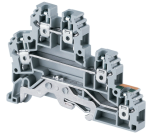


CDLG2.5



Two Level + Ground Feed through Terminal block

These blocks are ideal for use in application requiring high density wiring. Interconnection shorting is possible at both levels. The CDLG2.5 is a double level terminal block with as additional connection point for earthing (Grounding) cables. This separate connection point is appropriately identified by the green yellow imprint on its top.

TECHNICAL DATA

Rated Voltage	500 V
Rated Current	24 A
Tightening Torque	0.4 Nm
Housing Material	Polymide
Product Function	Double Level Plus Earthing
Wire Entry Orientation	Side Entry
Mounting Possibility	DIN 35/DIN 35-15 Rail
Screw Size	M2.5
Operated by	Screwdriver
Rated Surge Voltage	8 KV
Pollution Degree	3

CONNECTION DATA

Conductor Cross Section Stranded min.	0.2 mm ²
Conductor Cross Section Stranded max.	2.5 mm ²
Conductor Cross Section AWG/Kcmil min	24 AWG
Conductor Cross Section AWG/Kcmil max	12 AWG
Conductor Cross Section Stranded with Ferrule/Lug min	0.2 mm ²
Conductor Cross Section Stranded with Ferrule/Lug max	2.5 mm ²
2 Conductors with same Cross Section Stranded min	0.2 mm ²
2 Conductor with same Cross Section Stranded max	1.5 mm ²
Conductor Cross Section Solid min	0.2 mm ²
Conductor Cross Section Solid max	4 mm ²
2 Conductors with same Cross Section Stranded with TWIN Ferrule/Lug min	0.2 mm ²
2 Conductor with same Cross Section Stranded with TWIN Ferrule/Lug max	1.5 mm ²
Stripping Length	9 mm
Internal Cylindrical Gauge	A3

DIMENSIONS

Height with DIN 35 x 15 mm rail	61 mm
Height with DIN 35 x 7.5 mm rail	53 mm
Length	71.1 mm
Width (Thickness)	6 mm

ORDERING INFORMATION

CAT. NO.	DESCRIPTION	STD. PACK
CDLG2.5	2.5 sq.mm double level grounding Terminal Block in Grey colour	100

ACCESSORIES

IMAGES	CAT. NO.	DESCRIPTION	STD. PACK
	CA701-1M	Din 35 Rail unslotted 1 meter	50
	CA701-2M	Din 35 Rail unslotted 2 meter	50
	CA701-2M-S	Din 35 Rail slotted 2 meter	50
	CA701-1M-S	Din 35 Rail slotted 1 meter	50
	CA701-15-1M	Din 35 Rail 15 deep unslotted 1 meter	50
	CA701-15-1M-S	Din 35 Rail 15 deep slotted 1 meter	50
	CA701-15-2M	Din 35 Rail 15 deep unslotted 2 meter	50
	CA701-15-2M-S	Din 35 Rail 15 deep slotted 2 meter	50
	CA202	End Clamp in Polyamide suitable for Din 35 / Din 35-15 Rails	25
	CA702	End Clamp in Polyamide 66 suitable for Din 32 / Din 35 / Din 35-15 Rails	50
	CA802	End Clamp in Polyamide suitable for Din 35 / Din 35-15 Rails	50
	EPCDLG2.5	End Plate in grey colour	50
	SPCDLG2.5	Separator Plate in Grey colour	100
	CA627/2	Preassembled Internal Shorting Link Assemblies with 2 poles	100
	CA627/3	Preassembled Internal Shorting Link Assemblies with 3 poles	100
	CA627/4	Preassembled Internal Shorting Link Assemblies with 4 poles	100
	CA627/10	Preassembled Internal Shorting Link Assemblies with 4 poles	10

CDLG2.5



connectwell
THE RIGHT CONNECTION

ACCESSORIES

IMAGES	CAT. NO.	DESCRIPTION	STD. PACK
	CA715/2	External Comb Type Shorting Link available in 2 Pole	100
	CA715/3	External Comb Type Shorting Link available in 3 Pole	100
	CA715/4	External Comb Type Shorting Link available in 4 Pole	100
	CA715/10	External Comb Type Shorting Link available in 10 Pole	20
	CA703/1	Permanent Shorting Link for 2 way shorting	100
	CA704/1	Permanent Shorting Link for 3 way shorting	100
	CA705/1	Permanent Shorting Link for 4 way shorting	100
	CA732/10	Permanent Shorting Link for 10 way shorting	100
	CA732/10-A	Permanent Shorting Link (Breakable) for 10 way shorting	100
	CA732/100	Permanent Shorting Link for 100 way shorting	100
	CA611/S/Q	Shorting Sleeve and Screw	100
	CA509/K2G	Marking Tag Blank suitable for CDLG2.5 / CTLG2.5 / CTLG2.5(E)MOV / ADLG2.5 / ATL2.5 / ATL2.5H / ATLG2.5 Terminal Blocks	100
	CA509/K2G/H	Marking Tag with Horizontal printing suitable for CDLG2.5 / CTLG2.5 / CTLG2.5(E)MOV Terminal Blocks	100
	CA509/K2G/V	Marking Tag with Vertical printing suitable for CDLG2.5 / CTLG2.5 / CTLG2.5(E)MOV Terminal Blocks	100
	CA707/TS/01	Test Socket Suitable for CTS2.5UN / CTS2.5UE / CTS4UN / CTC4U / CMB4 / CTLG2.5 / CTL2.5U / CTL2.5UH / ODL4U / ODL4UA / CDLG2.5 / CMC1-2 / CMC2-2 Terminal Blocks.	100
	SCS0.5/3	Electricians Screwdriver for slotted screws	10

APPROVALS



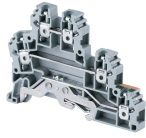
NOTES

The Rated current is with the use of copper (Cu) conductor/Wire

RATINGS AS PER STANDARDS

STANDARDS	UL 1059
Approvals	UL
Conductor Cross Section Stranded min.	24 AWG
Conductor Cross Section Stranded max.	12 AWG

CDLG2.5



connectwell
THE RIGHT CONNECTION

RATINGS AS PER STANDARDS

Rated Voltage	300 V
Rated Current	24 A
Tightening Torque	4.5 lb-in