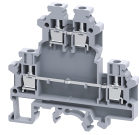


ODL4U



4 sq.mm Offset Double Level Terminal Blocks.

ODL4U Terminal Block , the top level is offset from the bottom level by half the thickness of the terminal block. this creates better access for the bottom level screw while the wires are connected. It is recommended to use End Plates at both ends of the assembled ODL4U sets for flat alignment to enable the effective use of end clamp. These are ideal for use in applications requiring high density wiring. Interconnection/shorting is possible at both levels.

TECHNICAL DATA

| | |
|------------------------|------------------------------|
| Rated Voltage | 800 V |
| Rated Current | 32 A |
| Tightening Torque | 0.5 Nm |
| Housing Material | Polymide |
| Product Function | Double Level |
| Wire Entry Orientation | Side Entry |
| Mounting Possibility | DIN 32/DIN 35/DIN 35-15 Rail |
| Screw Size | M3 |
| Operated by | Screwdriver |
| Rated Surge Voltage | 6 KV |
| Pollution Degree | 3 |

CONNECTION DATA

| | |
|---|---------------------|
| Conductor Cross Section Stranded min. | 0.2 mm ² |
| Conductor Cross Section Stranded max. | 4.0 mm ² |
| Conductor Cross Section AWG/Kcmil min | 22 AWG |
| Conductor Cross Section AWG/Kcmil max | 10 AWG |
| Conductor Cross Section Stranded with Ferrule/Lug min | 0.2 mm ² |
| Conductor Cross Section Stranded with Ferrule/Lug max | 4 mm ² |
| 2 Conductors with same Cross Section Stranded min | 0.2 mm ² |
| 2 Conductor with same Cross Section Stranded max | 2.5 mm ² |
| Conductor Cross Section Solid min | 0.2 mm ² |
| Conductor Cross Section Solid max | 6 mm ² |
| 2 Conductors with same Cross Section Stranded with TWIN Ferrule/Lug min | 0.2 mm ² |
| 2 Conductor with same Cross Section Stranded with TWIN Ferrule/Lug max | 2.5 mm ² |
| Stripping Length | 9 mm |
| Internal Cylindrical Guage | A4 |

DIMENSIONS

| | |
|----------------------------------|---------|
| Height with DIN 32 rail | 69.2 mm |
| Height with DIN 35 x 15 mm rail | 71.7 mm |
| Height with DIN 35 x 7.5 mm rail | 65 mm |
| Length | 68 mm |
| Width (Thickness) | 6 mm |

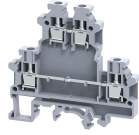
ORDERING INFORMATION

| CAT. NO. | DESCRIPTION | STD. PACK |
|----------|---|-----------|
| ODL4U | 4 sq.mm Offset Double Level Terminal Block in Grey colour | 50 |
| ODL4UBU | 4 sq.mm Offset Double Level Terminal Block in Blue colour | 50 |

ACCESSORIES

| IMAGES | CAT. NO. | DESCRIPTION | STD. PACK |
|--------|---------------|--|-----------|
| | CA501-1M | Din 32 Rail unslotted 1 meter | 50 |
| | CA501-1M-S | Din 32 Rail slotted 1 meter | 50 |
| | CA501-2M | Din 32 Rail unslotted 2 meter | 50 |
| | CA501-2M-S | Din 32 Rail slotted 2 meter | 50 |
| | CA701-1M | Din 35 Rail unslotted 1 meter | 50 |
| | CA701-2M | Din 35 Rail unslotted 2 meter | 50 |
| | CA701-2M-S | Din 35 Rail slotted 2 meter | 50 |
| | CA701-1M-S | Din 35 Rail slotted 1 meter | 50 |
| | CA701-15-1M | Din 35 Rail 15 deep unslotted 1 meter | 50 |
| | CA701-15-1M-S | Din 35 Rail 15 deep slotted 1 meter | 50 |
| | CA701-15-2M | Din 35 Rail 15 deep unslotted 2 meter | 50 |
| | CA701-15-2M-S | Din 35 Rail 15 deep slotted 2 meter | 50 |
| | CA202 | End Clamp in Polyamide suitable for Din 35 / Din 35-15 Rails | 25 |
| | CA702 | End Clamp in Polyamide 66 suitable for Din 32 / Din 35 / Din 35-15 Rails | 50 |
| | CA802 | End Clamp in Polyamide suitable for Din 35 / Din 35-15 Rails | 50 |
| | EP1ODL4U | End Plate in Grey colour | 50 |
| | EPODL4U | End Plate in Grey colour suitable for ODL4U Terminal Block | 50 |

ODL4U



connectwell
THE RIGHT CONNECTION

ACCESSORIES

| IMAGES | CAT. NO. | DESCRIPTION | STD. PACK |
|--------|-------------|---|-----------|
| | CA727/2 | Pre Assembled Shorting Link assemblies with 2 poles | 100 |
| | CA727/3 | Pre Assembled Shorting Links assemblies with 3 poles | 100 |
| | CA727/4 | Pre Assembled Shorting Link assemblies with 4 poles | 100 |
| | CA727/10 | Pre Assembled Shorting Links assemblies with 10 poles | 10 |
| | CA747/2 | Pre assembled Shorting Link for 2 way shorting | 100 |
| | CA747/3 | Pre assembled Shorting Link for 3 way shorting | 100 |
| | CA747/4 | Pre assembled Shorting Link for 4 way shorting | 100 |
| | CA747/10 | Pre assembled Shorting Link for 10 way shorting | 10 |
| | CA714/2 | External Comb Type Shorting Link Available in 2 pole | 100 |
| | CA714/3 | External Comb Type Shorting Link Available in 3 pole | 100 |
| | CA714/4 | External Comb Type Shorting Link Available in 4 pole | 100 |
| | CA714/10 | External Comb Type Shorting Link Available in 10 pole | 20 |
| | CA703/1 | Permanent Shorting Link for 2 way shorting | 100 |
| | CA704/1 | Permanent Shorting Link for 3 way shorting | 100 |
| | CA705/1 | Permanent Shorting Link for 4 way shorting | 100 |
| | CA732/10 | Permanent Shorting Link for 10 way shorting | 100 |
| | CA732/10-A | Permanent Shorting Link (Breakable) for 10 way shorting | 100 |
| | CA732/100 | Permanent Shorting Link for 100 way shorting | 100 |
| | CA607/S/Q | Shorting Sleeve and Screw | 100 |
| | CA509/K6 | Blank Marking Tag | 100 |
| | CA707/TS/01 | Test Socket Suitable for CTS2.5UN / CTS2.5UE / CTS4UN / CTC4U / CMB4 / CTLG2.5 / CTL2.5U / CTL2.5UH / ODL4U / ODL4UA / CDLG2.5 / CMC1-2 / CMC2-2 Terminal Blocks. | 100 |
| | SCS0.6/3.5 | Electricians Screwdriver for slotted screws | 10 |
| | MC6 | MARKER CARD 6MM PITCH WITH 72 TAGS | 10 |

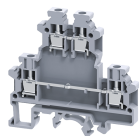
APPROVALS



NOTES

The Rated current is with the use of copper (Cu) conductor/Wire

ODL4U



connectwell
THE RIGHT CONNECTION

RATINGS AS PER STANDARDS

| STANDARDS | UL 1059 | CSA C.22.2 No:158 | DIN EN60947-7-1 |
|---------------------------------------|------------------------|--------------------------|------------------------|
| Approvals | UL | CSA | VDE |
| Conductor Cross Section Stranded min. | 22 AWG | 22 AWG | 0.5 mm ² |
| Conductor Cross Section Stranded max. | 10 AWG | 10 AWG | 4 mm ² |
| Rated Voltage | 600 V | 600 V | 630 V |
| Rated Current | 35 A | 35 A | 32 A |
| Tightening Torque | 7 lb-in | 7 lb-in | 0.5 Nm |
| STANDARDS | IEC/EN60947-7-1 | EN60079-7 | EN60079-7 |
| Approvals | CE | ATEX-IECex | ATEX |
| Conductor Cross Section Stranded min. | 0.2 mm ² | 0.5 mm ² | 0.5 mm ² |
| Conductor Cross Section Stranded max. | 4 mm ² | 4 mm ² | 4 mm ² |
| Rated Voltage | 800 V | 550 V | 550 V |
| Rated Current | 32 A | 28 A | 28 A |
| Tightening Torque | 0.5 Nm | 0.5 Nm | 0.5 Nm |
| Operating Temperature Range | | | -40 to +85 °C |