

ODLG2.5A



2.5 sq.mm offset stackable Double Level Earthing Terminal Blocks.

These blocks are ideal for use in applications requiring high density wiring.

TECHNICAL DATA

Rated Voltage	800 V
Rated Current	24 A
Tightening Torque	0.4 Nm
Housing Material	Polymide
Product Function	Double Level Plus Earthing
Wire Entry Orientation	Side Entry
Mounting Possibility	DIN 35/DIN 35-15 Rail
Screw Size	M3
Operated by	Screwdriver
Rated Surge Voltage	8 KV
Pollution Degree	3

CONNECTION DATA

Conductor Cross Section Stranded min.	0.2 mm ²
Conductor Cross Section Stranded max.	2.5 mm ²
Conductor Cross Section AWG/Kcmil min	24 AWG
Conductor Cross Section AWG/Kcmil max	12 AWG
Conductor Cross Section Stranded with Ferrule/Lug min	0.2 mm ²
Conductor Cross Section Stranded with Ferrule/Lug max	2.5 mm ²
2 Conductors with same Cross Section Stranded min	0.2 mm ²
2 Conductor with same Cross Section Stranded max	1.5 mm ²
Conductor Cross Section Solid min	0.2 mm ²
Conductor Cross Section Solid max	4 mm ²
Stripping Length	8 mm

DIMENSIONS

Height with DIN 35 x 15 mm rail	68.5 mm
Height with DIN 35 x 7.5 mm rail	61 mm
Length	62 mm
Width (Thickness)	5 mm

ORDERING INFORMATION

CAT. NO.	DESCRIPTION	STD. PACK
ODLG2.5A	2.5 sq.mm stackable offset Feed Through + Grounding / Earthing Terminal Block	100

ACCESSORIES

IMAGES	CAT. NO.	DESCRIPTION	STD. PACK
	CA701-1M	Din 35 Rail unslotted 1 meter	50

ACCESSORIES

IMAGES	CAT. NO.	DESCRIPTION	STD. PACK
	CA701-2M	Din 35 Rail unslotted 2 meter	50
	CA701-2M-S	Din 35 Rail slotted 2 meter	50
	CA701-1M-S	Din 35 Rail slotted 1 meter	50

	CA701-15-1M	Din 35 Rail 15 deep unslotted 1 meter	50
	CA701-15-1M-S	Din 35 Rail 15 deep slotted 1 meter	50
	CA701-15-2M	Din 35 Rail 15 deep unslotted 2 meter	50
	CA701-15-2M-S	Din 35 Rail 15 deep slotted 2 meter	50

	CA202	End Clamp in Polyamide suitable for Din 35 / Din 35-15 Rails	25
--	-------	--	----

	CA702	End Clamp in Polyamide 66 suitable for Din 32 / Din 35 / Din 35-15 Rails	50
--	-------	--	----

	CA509/K5	Blank Marking Tag	100
--	----------	-------------------	-----

	JX2.5/2	Shorting Link for 2.5 sq mm series	100
	JX2.5/3	Shorting Link for 2.5 sq mm series	50
	JX2.5/4	Shorting Link for 2.5 sq mm series	50
	JX2.5/5	Shorting Link for 2.5 sq mm series	50
	JX2.5/6	Shorting Link for 2.5 sq mm series	50
	JX2.5/7	Shorting Link for 2.5 sq mm series	10
	JX2.5/8	Shorting Link for 2.5 sq mm series	10
	JX2.5/10	Shorting Link for 2.5 sq mm series	10
JX2.5/20	Shorting Link for 2.5 sq.mm series	10	

	SCS0.6/3.5	Electricians Screwdriver for slotted screws	10
--	------------	---	----

	C:\inetpub\wwwroot\Connectwell.Website\ EPODL2.5	End Plate in Grey colour	50
--	--	--------------------------	----

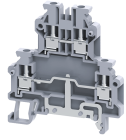
	C:\inetpub\wwwroot\Connectwell.Website\ EP1ODL2.5	End Plate in Grey colour	50
--	---	--------------------------	----

	MC5	MARKER CARD 5MM PITCH WITH 84 TAGS	10
--	-----	------------------------------------	----

APPROVALS



ODLG2.5A



connectwell
THE RIGHT CONNECTION

NOTES

The Rated current is with the use of copper (Cu) conductor/Wire

RATINGS AS PER STANDARDS

STANDARDS	UL 1059	IEC/EN60947-7-2	CSA C.22.2 No:158
Approvals	UL	CE	CSA
Conductor Cross Section Stranded min.	24 AWG	0.2 mm ²	24 AWG
Conductor Cross Section Stranded max.	12 AWG	2.5 mm ²	12 AWG
Rated Voltage	300 V	800 V	300 V
Rated Current	25 A	24 A	25 A
Tightening Torque	4.5 lb-in	0.4 Nm	4.5 lb-in