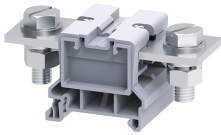


# CBB120



**connectwell**  
THE RIGHT CONNECTION

## 120 sq.mm Stud Type Power Terminal Blocks

CBB series Terminal Blocks are preferred for application using wires of large cross section. The Wire is crimped to a ring / fork lug and is screwed on to the flat current bar of the Terminal Block.

### TECHNICAL DATA

Rated Voltage	1000 V
Rated Current	269 A
Tightening Torque	10 Nm
Housing Material	Polymide
Product Function	Feed Through
Wire Entry Orientation	Side Entry
Mounting Possibility	DIN 35/DIN 35-15 Rail
Stud Size	M10
Operated by	Nut Driver
Rated Surge Voltage	8 KV
Pollution Degree	3

### CONNECTION DATA

Conductor Cross Section Stranded min.	16 mm <sup>2</sup>
Conductor Cross Section Stranded max.	120 mm <sup>2</sup>
Conductor Cross Section AWG/Kcmil min	8 AWG
Conductor Cross Section AWG/Kcmil max	250 kcmil
Conductor Cross Section Stranded with Ferrule/Lug min	16 mm <sup>2</sup>
Conductor Cross Section Stranded with Ferrule/Lug max	120 mm <sup>2</sup>
Stripping Length	mm

### DIMENSIONS

Height with DIN 35 x 15 mm rail	54.5 mm
Height with DIN 35 x 7.5 mm rail	47.3 mm
Length	100 mm
Width (Thickness)	48 mm

### ORDERING INFORMATION

CAT. NO.	DESCRIPTION	STD. PACK
CBB120	120 sq.mm Feed through Bolt/Nut Type Terminal Block in Grey colour	10

### ACCESSORIES

IMAGES	CAT. NO.	DESCRIPTION	STD. PACK
	CA701-1M	Din 35 Rail unslotted 1 meter	50
	CA701-2M	Din 35 Rail unslotted 2 meter	50
	CA701-2M-S	Din 35 Rail slotted 2 meter	50
	CA701-1M-S	Din 35 Rail slotted 1 meter	50

### ACCESSORIES

IMAGES	CAT. NO.	DESCRIPTION	STD. PACK
	CA701-15-1M	Din 35 Rail 15 deep unslotted 1 meter	50
	CA701-15-1M-S	Din 35 Rail 15 deep slotted 1 meter	50
	CA701-15-2M	Din 35 Rail 15 deep unslotted 2 meter	50
	CA701-15-2M-S	Din 35 Rail 15 deep slotted 2 meter	50
	CA202	End Clamp in Polyamide suitable for Din 35 / Din 35-15 Rails	25
	CA702	End Clamp in Polyamide 66 suitable for Din 32 / Din 35 / Din 35-15 Rails	50
	CA802	End Clamp in Polyamide suitable for Din 35 / Din 35-15 Rails	50
	PPCBB1	Partition Plate in Grey colour	50
	CA793/2	Permanent Shorting Link for 2 way shorting	10
	CA793/3	Permanent Shorting Link for 3 way shorting	10
	CA509/K16	Marking Tag Blank suitable for CTS35UNA / CGT35U Terminal Blocks	100
	CBBPC2/100	Protective cover is available in 100 mm Length	10
	CBBPC2/160	Protective cover is available in 160 mm Length	10
	CBBPC2/200	Protective cover is available in 200 mm Length	10
	CBBPC2/250	Protective cover is available in 250 mm Length	10
	MC16	MARKER CARD 16MM PITCH WITH 24 TAGS	10

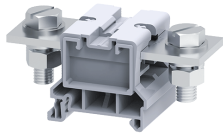
### APPROVALS



### NOTES

The Rated current is with the use of copper (Cu) conductor/Wire

CBB120



**connectwell**  
THE RIGHT CONNECTION

**RATINGS AS PER STANDARDS**

<b>STANDARDS</b>	<b>UL 1059</b>	<b>CSA C.22.2 No:158</b>	<b>IEC/EN60947-7-1</b>
Approvals	UL	CSA	CE
Conductor Cross Section Stranded min.	8 AWG	8 AWG	16 mm <sup>2</sup>
Conductor Cross Section Stranded max.	250 AWG	250 AWG	120 mm <sup>2</sup>
Rated Voltage	600 V	600 V	1000 V
Rated Current	255 A	255 A	269 A
Tightening Torque	90 lb-in	90 lb-in	10 Nm