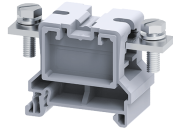


CBB35/50LS



connectwell
THE RIGHT CONNECTION

50 sq.mm Stud Type Power Terminal Blocks

CBB series Terminal Blocks are preferred for application using wires of large cross section. The Wire is crimped to a ring / fork lug and is screwed on to the flat current bar of the Terminal Block.

TECHNICAL DATA

Rated Voltage	1000 V
Rated Current	150 A
Tightening Torque	3 Nm
Housing Material	Polymide
Product Function	Feed Through
Wire Entry Orientation	Side Entry
Mounting Possibility	DIN 35/DIN 35-15 Rail
Stud Size	M6
Operated by	Nut Driver
Rated Surge Voltage	8 KV
Pollution Degree	3

CONNECTION DATA

Conductor Cross Section Stranded min.	6 mm ²
Conductor Cross Section Stranded max.	50 mm ²
Conductor Cross Section AWG/Kcmil min	10 AWG
Conductor Cross Section AWG/Kcmil max	1/0 AWG
Conductor Cross Section Stranded with Ferrule/Lug min	6 mm ²
Conductor Cross Section Stranded with Ferrule/Lug max	50 mm ²
Stripping Length	mm

DIMENSIONS

Height with DIN 35 x 15 mm rail	54.5 mm
Height with DIN 35 x 7.5 mm rail	47.5 mm
Length	75 mm
Width (Thickness)	32 mm

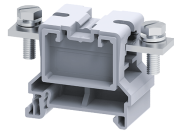
ORDERING INFORMATION

CAT. NO.	DESCRIPTION	STD. PACK
CBB35/50LS	50 sq.mm Feed through Slotted Bolt Type Terminal Block in Grey colour	10
CBB35/50LSR	50 sq.mm Feed through Slotted Bolt Type Terminal Block in Red colour	10
CBB35/50LSY	50 sq.mm Feed through Slotted Bolt Type Terminal Block in Yellow colour	10
CBB35/50LSBU	50 sq.mm Feed through Slotted Bolt Type Terminal Block in Blue colour	10
CBB35/50LSBK	50 sq.mm Feed through Slotted Bolt Type Terminal Block in Black colour	10
CBB35/50LSGN	50 sq.mm Feed through Slotted Bolt Type Terminal Block in Green colour	10

ACCESSORIES

IMAGES	CAT. NO.	DESCRIPTION	STD. PACK
	CA701-1M	Din 35 Rail unslotted 1 meter	50
	CA701-2M	Din 35 Rail unslotted 2 meter	50
	CA701-2M-S	Din 35 Rail slotted 2 meter	50
	CA701-1M-S	Din 35 Rail slotted 1 meter	50
	CA701-15-1M	Din 35 Rail 15 deep unslotted 1 meter	50
	CA701-15-1M-S	Din 35 Rail 15 deep slotted 1 meter	50
	CA701-15-2M	Din 35 Rail 15 deep unslotted 2 meter	50
	CA701-15-2M-S	Din 35 Rail 15 deep slotted 2 meter	50
	CA202	End Clamp in Polyamide suitable for Din 35 / Din 35-15 Rails	25
	CA702	End Clamp in Polyamide 66 suitable for Din 32 / Din 35 / Din 35-15 Rails	50
	CA802	End Clamp in Polyamide suitable for Din 35 / Din 35-15 Rails	50
	PPCBB	Partition Plate in Grey colour	50
	CA790/2	Permanent Shorting Link for 2 way shorting	10
	CA790/3	Permanent Shorting Link for 3 way shorting	10
	CA509/K12	Marking Tag Blank suitable for CTS16U / CTS25UN / CGT16N / CDB25 / CMDB25 / CSC16T / CSCG16T / CY16 / CYG16 Terminal Blocks	100
	CBBPC1/70	Protective cover is available in 70 mm Length	10
	CBBPC1/80	Protective cover is available in 80 mm Length	10
	CBBPC1/130	Protective cover is available in 130 mm Length	10
	CBBPC1/160	Protective cover is available in 160 mm Length	10
	CBBPC1/200	Protective cover is available in 200 mm Length	10
	CBBPC1/250	Protective cover is available in 250 mm Length	10
	MC12	MARKER CARD 12MM PITCH WITH 36 TAGS	10

CBB35/50LS



connectwell
THE RIGHT CONNECTION

APPROVALS



NOTES

The Rated current is with the use of copper (Cu) conductor/Wire

RATINGS AS PER STANDARDS

STANDARDS	IEC/EN60947-7-1	UL 1059	CSA C.22.2 No:158
Approvals	CE	UL	CSA
Conductor Cross Section Stranded min.	6 mm ²	10 AWG	10 AWG
Conductor Cross Section Stranded max.	50 mm ²	1/0 AWG	1/0 AWG
Rated Voltage	1000 V	600 V	600 V
Rated Current	150 A	150 A	150 A
Tightening Torque	3 Nm	27 lb-in	27 lb-in