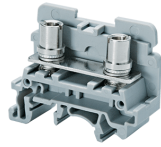


# CSTSB5U



**connectwell**  
THE RIGHT CONNECTION

Screwdriver operated M5 sized Stud Type Terminal Blocks, with Universal Mounting Possibility.

These Terminal Blocks are preferred for applications where the connections are subjected to severe vibrations. The wire is crimped to ring /fork type Lug (Ferrule) and is screwed on to flat current bar on the Terminal Block. The range includes Terminal Blocks for wire sizes from 1.5 to 16 sq mm. Cross connection can be achieved with the aid of external shorting links. It is recommended to use Protective Covers in transparent plastic to fully shroud these assemblies.

### TECHNICAL DATA

Rated Voltage	1000 V
Rated Current	76 A
Tightening Torque	2 Nm
Housing Material	Polymide
Product Function	Feed Through
Wire Entry Orientation	Side Entry
Mounting Possibility	DIN 32/DIN 35/DIN 35-15 Rail
Stud Size	M5
Operated by	Screwdriver
Rated Surge Voltage	8 KV
Pollution Degree	3

### CONNECTION DATA

Conductor Cross Section Stranded min.	1.5 mm <sup>2</sup>
Conductor Cross Section Stranded max.	16 mm <sup>2</sup>
Conductor Cross Section AWG/Kcmil min	22 AWG
Conductor Cross Section AWG/Kcmil max	4 AWG
2 Conductors with same Cross Section Stranded min	1.5 mm <sup>2</sup>
2 Conductor with same Cross Section Stranded max	16 mm <sup>2</sup>

### DIMENSIONS

Height with DIN 32 rail	46.3 mm
Height with DIN 35 x 15 mm rail	48 mm
Height with DIN 35 x 7.5 mm rail	40.7 mm
Length	50 mm
Width (Thickness)	17 mm

### ORDERING INFORMATION

CAT. NO.	DESCRIPTION	STD. PACK
CSTSB5U	16 sq.mm Stud Type Terminal Block in Grey colour	100
CSTSB5UR	16 sq.mm Stud Type Terminal Block in Red colour	100
CSTSB5UY	16 sq.mm Stud Type Terminal Block in Yellow colour	100
CSTSB5UBU	16 sq.mm Stud Type Terminal Block in Blue colour	100
CSTSB5UGN	16 sq.mm Stud Type Terminal Block in Green Colour	100

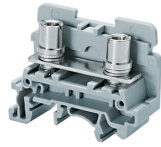
### ORDERING INFORMATION

CAT. NO.	DESCRIPTION	STD. PACK
CSTSB5UBK	16 sq.mm Stud Type Terminal Block in Black colour	100

### ACCESSORIES

IMAGES	CAT. NO.	DESCRIPTION	STD. PACK
	CA501-1M	Din 32 Rail unslotted 1 meter	50
	CA501-1M-S	Din 32 Rail slotted 1 meter	50
	CA501-2M	Din 32 Rail unslotted 2 meter	50
	CA501-2M-S	Din 32 Rail slotted 2 meter	50
	CA701-1M	Din 35 Rail unslotted 1 meter	50
	CA701-2M	Din 35 Rail unslotted 2 meter	50
	CA701-2M-S	Din 35 Rail slotted 2 meter	50
	CA701-1M-S	Din 35 Rail slotted 1 meter	50
	CA701-15-1M	Din 35 Rail 15 deep unslotted 1 meter	50
	CA701-15-1M-S	Din 35 Rail 15 deep slotted 1 meter	50
	CA701-15-2M	Din 35 Rail 15 deep unslotted 2 meter	50
	CA701-15-2M-S	Din 35 Rail 15 deep slotted 2 meter	50
	CA702	End Clamp in Polyamide 66 suitable for Din 32 / Din 35 / Din 35-15 Rails	50
	CA802	End Clamp in Polyamide suitable for Din 35 / Din 35-15 Rails	50
	EPCSTSU	End Plate in Grey colour suitable for CSTSN4U/N5U/N6U/B4U/B5U Terminal Block	50
	EPCSTSUBU	End Plate in Blue colour suitable for CSTSN4U/N5U/N6U/B4U/B5U Terminal Block	50
	CA514/1-2	Insulated Fork type Shorting Link available in 2 Pole	100
	CA514/1-3	Insulated Fork type Shorting Link available in 3 Pole	50
	CA514/1-4	Insulated Fork type Shorting Link available in 4 Pole	50
	CA514/3-2	Insulated Ring Type Shorting Link available in 2 Pole	100
	CA514/3-3	Insulated Ring Type Shorting Link available in 3 Pole	50
	CA514/3-4	Insulated Ring Type Shorting Link available in 4 Pole	50

CSTSB5U



**connectwell**  
THE RIGHT CONNECTION

**ACCESSORIES**

IMAGES	CAT. NO.	DESCRIPTION	STD. PACK
	CA512/1-2	Removable Shorting Link available in 2 Pole	100
	CA512/1-3	Removable Shorting Link available in 3 Pole	50
	CA512/1-4	Removable Shorting Link available in 4 Pole	50
	CA512/3-2	Ring Type Shorting Link available in 2 Pole	100
	CA512/3-3	Ring Type Shorting Link available in 3 Pole	50
	CA512/3-4	Ring Type Shorting Link available in 4 Pole	50
	CA509/K2B4	Blank Marking Tag	100
	CSTSPC1-2	Protective cover is available in 100 mm Length	10
	CSTSPC1-3	Protective cover is available in 200 mm Length	10
	CSTSPC1-4	Protective cover is available in 300 mm Length	10
	CSTSPC1	This protective cover is used for covering 2 Terminals	100
	CSTSPC1-1	This protective cover is used for covering 3 Terminals	100
	SCS1/5.5	Electricians Screwdriver for slotted screws	10
	MC2B4	MARKER CARD 5MM PITCH WITH 72 TAGS	10

**APPROVALS**



**NOTES**

The Rated current is with the use of copper (Cu) conductor/Wire

**RATINGS AS PER STANDARDS**

STANDARDS	UL 1059	CSA C.22.2 No:158	IEC/EN60947-7-1
Approvals	UL	CSA	CE
Conductor Cross Section Stranded min.	22 AWG	22 AWG	1.5 mm <sup>2</sup>
Conductor Cross Section Stranded max.	4 AWG	4 AWG	16 mm <sup>2</sup>
Rated Voltage	600 V	600 V	1000 V
Rated Current	80 A	80 A	76 A
Tightening Torque	25 lb-in	25 lb-in	2 Nm