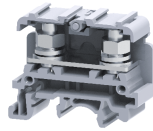


CSTSN6USH



Nut driver operated M6 sized Stud Type Hinge Terminal Blocks, with Universal Mounting Possibility.

These Terminal Blocks are preferred for applications where the connections are subjected to severe vibrations. The wire is crimped to ring /fork type Lug (Ferrule) and is screwed on to flat current bar on the Terminal Block. The range includes Terminal Blocks for wire sizes from 1.5 to 35 sq mm. Cross connection can be achieved with the aid of external shorting links. It is recommended to use Protective Covers in transparent plastic to fully shroud these assemblies.

TECHNICAL DATA

Rated Voltage	1000 V
Rated Current	125 A
Tightening Torque	3 Nm
Housing Material	Polymide
Standard Colour	Grey
Product Function	Feed Through
Wire Entry Orientation	Side Entry
Mounting Possibility	DIN 32/DIN 35/DIN 35-15 Rail
Stud Size	M6
Operated by	Nut Driver
Rated Surge Voltage	8 V
Pollution Degree	3

CONNECTION DATA

Conductor Cross Section Stranded min.	1.5 mm ²
Conductor Cross Section Stranded max.	35 mm ²
Conductor Cross Section AWG/Kcmil min	22 AWG
Conductor Cross Section AWG/Kcmil max	2 AWG
Conductor Cross Section Solid min	1.5 mm ²
Conductor Cross Section Solid max	35 mm ²
Stripping Length	mm

DIMENSIONS

Height with DIN 32 rail	47.7 mm
Height with DIN 35 x 15 mm rail	49.7 mm
Height with DIN 35 x 7.5 mm rail	42.2 mm
Length	51.5 mm
Width (Thickness)	17 mm

ORDERING INFORMATION

CAT. NO.	DESCRIPTION	STD. PACK
CSTSN6USH	35 sq.mm M6 Stud Type Hinge Terminal Block in Grey colour	100
CSTSN6USHGN	35 sq.mm M6 Stud Type Hinge Terminal Block in Green colour	100
CSTSN6USHR	35 sq.mm M6 Stud Type Hinge Terminal Block in Red colour	100
CSTSN6USHY	35 sq.mm M6 Stud Type Hinge Terminal Block in Yellow colour	100

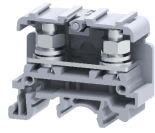
ORDERING INFORMATION

CAT. NO.	DESCRIPTION	STD. PACK
CSTSN6USHBU	35 sq.mm M6 Stud Type Hinge Terminal Block in Blue colour	100
CSTSN6USHBK	35 sq.mm M6 Stud Type Hinge Terminal Block in Black colour	100

ACCESSORIES

IMAGES	CAT. NO.	DESCRIPTION	STD. PACK
	CA501-1M	Din 32 Rail unslotted 1 meter	50
	CA501-1M-S	Din 32 Rail slotted 1 meter	50
	CA501-2M	Din 32 Rail unslotted 2 meter	50
	CA501-2M-S	Din 32 Rail slotted 2 meter	50
	CA701-1M	Din 35 Rail unslotted 1 meter	50
	CA701-2M	Din 35 Rail unslotted 2 meter	50
	CA701-2M-S	Din 35 Rail slotted 2 meter	50
	CA701-1M-S	Din 35 Rail slotted 1 meter	50
	CA701-15-1M	Din 35 Rail 15 deep unslotted 1 meter	50
	CA701-15-1M-S	Din 35 Rail 15 deep slotted 1 meter	50
	CA701-15-2M	Din 35 Rail 15 deep unslotted 2 meter	50
	CA701-15-2M-S	Din 35 Rail 15 deep slotted 2 meter	50
	CA702	End Clamp in Polyamide 66 suitable for Din 32 / Din 35 / Din 35-15 Rails	50
	CA802	End Clamp in Polyamide suitable for Din 35 / Din 35-15 Rails	50
	EPCSTSU	End Plate in Grey colour suitable for CSTSN4U/N5U/N6U/B4U/B5U Terminal Block	50
	EPCSTSUBU	End Plate in Blue colour suitable for CSTSN4U/N5U/N6U/B4U/B5U Terminal Block	50
	CA514/7-2	Insulated Removable Shorting Link available in 2 Pole	100
	CA514/7-3	Insulated Removable Shorting Link available in 3 Pole	50
	CA514/7-4	Insulated Removable Shorting Link available in 4 Pole	50

CSTSN6USH



connectwell
THE RIGHT CONNECTION

ACCESSORIES

IMAGES	CAT. NO.	DESCRIPTION	STD. PACK
	CA514/8-2	Insulated Ring Type Shorting Link available in 2 Pole	100
	CA514/8-3	Insulated Ring Type Shorting Link available in 3 Pole	50
	CA514/8-4	Insulated Ring Type Shorting Link available in 4 Pole	50
	CA512/7-2	Fork Type Shorting Link available in 2 Pole	100
	CA512/7-3	Fork Type Shorting Link available in 3 Pole	50
	CA512/7-4	Fork Type Shorting Link available in 4 Pole	50
	CA512/8-2	Ring Type Shorting Link available in 2 Pole	100
	CA512/8-3	Ring Type Shorting Link available in 3 Pole	50
	CA512/8-4	Ring Type Shorting Link available in 4 Pole	50
	CSTSPC1-2	Protective cover is available in 100 mm Length	10
	CSTSPC1-3	Protective cover is available in 200 mm Length	10
	CSTSPC1-4	Protective cover is available in 300 mm Length	10
	CSTSPC1	This protective cover is used for covering 2 Terminals	100
	CSTSPC1-1	This protective cover is used for covering 3 Terminals	100
	CA509/K9	Blank Marking Tag	100

APPROVALS



NOTES

The Rated current is with the use of copper (Cu) conductor/Wire

RATINGS AS PER STANDARDS

STANDARDS	UL 1059	CSA C.22.2 No:158	IEC/EN60947-7-1
Approvals	UL	CSA	CE
Conductor Cross Section Stranded min.	22 AWG	22 AWG	1.5 mm ²
Conductor Cross Section Stranded max.	2 AWG	2 AWG	35 mm ²
Rated Voltage	600 V	600 V	1000 V
Rated Current	125 A	125 A	125 A
Tightening Torque	25 lb-in	25 lb-in	3 Nm