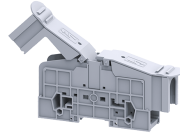


PTB70/95SH



connectwell
THE RIGHT CONNECTION

95 sq.mm Stud Type Power Terminal Blocks with Hinged Protective Cover

PTB series Terminal Blocks are preferred for application using wires of large cross section. The Wire is crimped to a ring / fork lug and is screwed on to the flat current bar of the Terminal Block. Specially designed Mounting Feet hold the Terminal Block rigidly on to the Mounting Rail. Two Lugs of the rated cross section can be connected to the Terminal Block, without sacrificing the safety of the Terminal Block. In PTB70/95SH Terminal Blocks a hinged protective cover makes the Terminal Block shock proof (finger safe) and has marker recess to accept marking tag.

TECHNICAL DATA

Rated Voltage	1000 V
Rated Current	232 A

CONNECTION DATA

Conductor Cross Section Stranded min.	1.5 mm ²
Conductor Cross Section Stranded max.	95 mm ²

DIMENSIONS

Height with DIN 35 x 15 mm rail	86 mm
Height with DIN 35 x 7.5 mm rail	78 mm
Length	192 mm
Width (Thickness)	32 mm

ORDERING INFORMATION

CAT. NO.	DESCRIPTION	STD. PACK
PTB70/95SH	95 sq.mm Bolt Type Power Terminal Block in Grey colour with Shroud	10
PTB70/95SHBU	95 sq.mm Bolt Type Power Terminal Block in blue colour with Shroud	10
PTB70/95SHR	95 sq.mm Bolt Type Power Terminal Block in Red colour with Shroud	10
PTB70/95SHY	95 sq.mm Bolt Type Power Terminal Block in Yellow colour with Shroud	10

NOTES

The Rated current is with the use of copper (Cu) conductor/Wire

RATINGS AS PER STANDARDS

STANDARDS	UL 1059	IEC/EN60947-7-1	CSA C.22.2 No:158
Approvals	UL	CE	CSA
Conductor Cross Section Stranded min.	8 AWG	1.5 mm ²	8 AWG
Conductor Cross Section Stranded max.	4/0 AWG	95 mm ²	4/0 AWG
Rated Voltage	600 V	1000 V	600 V
Rated Current	230 A	232 A	230 A
Tightening Torque	87 lb-in	10 Nm	87 lb-in