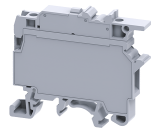


# CF4UL V0



4 sq.mm Single Level Fuse Terminal Blocks with LED indication.

These Terminal Blocks are used in electrical and control systems which require fuse protection. The CF series accepts industry standard 5 x 20 mm and 5 x 25 mm glass cartridge fuses. These blocks are completely closed and do not need a separate end plate. CF4UL series Terminal are used for offline indication in case of a fuse blow out.

### TECHNICAL DATA

Rated Voltage	800 V
Rated Current	6.3 A
Tightening Torque	0.5 Nm
Housing Material	Polymide
Standard Colour	Grey
Product Function	Single Level Fuse with Indication
Wire Entry Orientation	Side Entry
Mounting Possibility	DIN 32/DIN 35/DIN 35-15 Rail
Screw Size	M3
Operated by	Screwdriver
Rated Surge Voltage	8 KV
Pollution Degree	3

### CONNECTION DATA

Conductor Cross Section Stranded min.	0.2 mm <sup>2</sup>
Conductor Cross Section Stranded max.	4 mm <sup>2</sup>
Conductor Cross Section AWG/Kcmil min	22 AWG
Conductor Cross Section AWG/Kcmil max	10 AWG
Conductor Cross Section Stranded with Ferrule/Lug min	0.2 mm <sup>2</sup>
Conductor Cross Section Stranded with Ferrule/Lug max	4 mm <sup>2</sup>
2 Conductors with same Cross Section Stranded min	0.2 mm <sup>2</sup>
2 Conductor with same Cross Section Stranded max	2.5 mm <sup>2</sup>
Conductor Cross Section Solid min	0.2 mm <sup>2</sup>
Conductor Cross Section Solid max	6 mm <sup>2</sup>
2 Conductors with same Cross Section Stranded with TWIN Ferrule/Lug min	0.2 mm <sup>2</sup>
2 Conductor with same Cross Section Stranded with TWIN Ferrule/Lug max	2.5 mm <sup>2</sup>
Stripping Length	9.5 mm
Internal Cylindrical Gauge	A4

### DIMENSIONS

Height with DIN 32 rail	56.5 mm
Height with DIN 35 x 15 mm rail	57.6 mm
Height with DIN 35 x 7.5 mm rail	50.3 mm
Length	57 mm
Width (Thickness)	8 mm

### FUSE SPECIFICATIONS

Fuse Type	Cartridge glass fuse
Fuse Size	5 x 20 mm
Fuse Current Rating	6.3 A

### ORDERING INFORMATION

CAT. NO.	DESCRIPTION	STD. PACK
CF4UL110-240V(V0)	4sq.mm Fuse Terminal Block with indication suitable for 110-240V	50
CF4UL6-60V(V0)	4sq.mm Fuse Terminal Block with indication suitable for 6-60V.	50
CF4UL10-36V(V0)	4sq.mm Fuse Terminal Block with indication suitable for 10-36V.	50

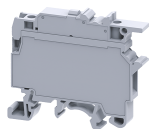
### APPROVALS



### NOTES

- 1) Polyamide6,6 flammability V0 grade as per UL 94
- 2) The Rated current is with the use of copper (Cu) conductor/Wire

CF4UL V0



**connectwell**  
THE RIGHT CONNECTION

**RATINGS AS PER STANDARDS**

<b>STANDARDS</b>	<b>UL 1059</b>	<b>CSA C.22.2 No:158</b>	<b>IEC/EN60947-7-3</b>
Approvals	UL	CSA	CE
Conductor Cross Section Stranded min.	22 AWG	22 AWG	0.2 mm <sup>2</sup>
Conductor Cross Section Stranded max.	10 AWG	10 AWG	4 mm <sup>2</sup>
Rated Voltage	600 V	600 V	800 V
Rated Current	10 A	10 A	6.3 A
Tightening Torque	7 lb-in	7 lb-in	0.5 Nm