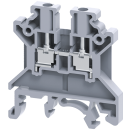


# CTS2.5UNV0



## 2.5 sq.mm, 5 mm thick Feed Through Terminal Block

2.5 sq.mm Feed Through Terminal Blocks are the most Versatile terminals for control, automation, instrumentation and power distribution applications. A specially designed flexible foot enables easy mounting and dismounting from the Din Rail with the help of a screw driver.

These Terminal Blocks have marker holding recesses to accept marking tags for circuit identification. Cross connection can be achieved with the aid of shorting links / sleeves & screws.

### TECHNICAL DATA

|                        |                              |
|------------------------|------------------------------|
| Rated Voltage          | 1000 V                       |
| Rated Current          | 24 A                         |
| Tightening Torque      | 0.4 Nm                       |
| Housing Material       | Polymide                     |
| Standard Colour        | Grey                         |
| Product Function       | Feed Through                 |
| Wire Entry Orientation | Side Entry                   |
| Mounting Possibility   | DIN 32/DIN 35/DIN 35-15 Rail |
| Screw Size             | M2.5                         |
| Operated by            | Screwdriver                  |
| Rated Surge Voltage    | 8 KV                         |
| Pollution Degree       | 3                            |

### CONNECTION DATA

|   |                     |
|---|---------------------|
| Conductor Cross Section Stranded min.                                   | 0.2 mm <sup>2</sup> |
| Conductor Cross Section Stranded max.                                   | 2.5 mm <sup>2</sup> |
| Conductor Cross Section AWG/Kcmil min                                   | 22 AWG              |
| Conductor Cross Section AWG/Kcmil max                                   | 12 AWG              |
| Conductor Cross Section Stranded with Ferrule/Lug min                   | 0.2 mm <sup>2</sup> |
| Conductor Cross Section Stranded with Ferrule/Lug max                   | 2.5 mm <sup>2</sup> |
| 2 Conductors with same Cross Section Stranded min                       | 0.2 mm <sup>2</sup> |
| 2 Conductor with same Cross Section Stranded max                        | 1.5 mm <sup>2</sup> |
| Conductor Cross Section Solid min                                       | 0.2 mm <sup>2</sup> |
| Conductor Cross Section Solid max                                       | 4 mm <sup>2</sup>   |
| 2 Conductors with same Cross Section Stranded with TWIN Ferrule/Lug min | 0.2 mm <sup>2</sup> |
| 2 Conductor with same Cross Section Stranded with TWIN Ferrule/Lug max  | 1.5 mm <sup>2</sup> |
| Stripping Length  | 8 mm                |
| Internal Cylindrical Gauge  | A3                  |

### DIMENSIONS

|                                  |         |
|----------------------------------|---------|
| Height with DIN 32 rail          | 51.1 mm |
| Height with DIN 35 x 15 mm rail  | 53.7 mm |
| Height with DIN 35 x 7.5 mm rail | 46.2 mm |
| Length                           | 43 mm   |
| Width (Thickness)                | 5 mm    |

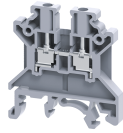
### ORDERING INFORMATION

| CAT. NO.   | DESCRIPTION  | STD. PACK |
|------------|--|-----------|
| CTS2.5UNV0 | 2.5 sq.mm Feed Through Terminal Block in Grey colour | 100       |

### ACCESSORIES

| IMAGES | CAT. NO.      | DESCRIPTION  | STD. PACK |
|--------|---------------|--|-----------|
|        | CA501-1M      | Din 32 Rail unslotted 1 meter  | 50        |
|        | CA501-1M-S    | Din 32 Rail slotted 1 meter  | 50        |
|        | CA501-2M      | Din 32 Rail unslotted 2 meter  | 50        |
|        | CA501-2M-S    | Din 32 Rail slotted 2 meter  | 50        |
|        | CA701-1M      | Din 35 Rail unslotted 1 meter  | 50        |
|        | CA701-2M      | Din 35 Rail unslotted 2 meter  | 50        |
|        | CA701-2M-S    | Din 35 Rail slotted 2 meter  | 50        |
|        | CA701-1M-S    | Din 35 Rail slotted 1 meter  | 50        |
|        | CA701-15-1M   | Din 35 Rail 15 deep unslotted 1 meter                                    | 50        |
|        | CA701-15-1M-S | Din 35 Rail 15 deep slotted 1 meter                                      | 50        |
|        | CA701-15-2M   | Din 35 Rail 15 deep unslotted 2 meter                                    | 50        |
|        | CA701-15-2M-S | Din 35 Rail 15 deep slotted 2 meter                                      | 50        |
|        | CA702         | End Clamp in Polyamide 66 suitable for Din 32 / Din 35 / Din 35-15 Rails | 50        |
|        | CA802         | End Clamp in Polyamide suitable for Din 35 / Din 35-15 Rails             | 50        |
|        | EP2.5/4UN     | End Plate in Grey Colour   | 50        |
|        | EP2.5/4UNY    | End Plate in Yellow Colour   | 50        |
|        | EP2.5/4UNBU   | End Plate in Blue Colour   | 50        |
|        | EP2.5/4UNR    | End Plate in Red Colour  | 50        |
|        | PP2.5/4UN     | Partition Plate in Grey colour   | 50        |
|        | SP2.5/4UN     | Separator Plate in Grey colour   | 100       |

CTS2.5UNV0



**connectwell**  
THE RIGHT CONNECTION

**ACCESSORIES**

| IMAGES | CAT. NO.  | DESCRIPTION  | STD. PACK |
|--------|-----------|--|-----------|
|        | CA721/2   | Preassembled Internal Short Link assemblies with 2 poles   | 100       |
|        | CA721/3   | Preassembled Internal Short Link assemblies with 3 poles   | 100       |
|        | CA721/4   | Preassembled Internal Short Link assemblies with 4 poles   | 100       |
|        | CA721/10  | Preassembled Internal Short Link assemblies with 10 poles  | 10        |
|        | CA721/100 | Preassembled Internal Short Link assemblies with 100 poles | 10        |

|  |           |  |     |
|--|-----------|--|-----|
|  | CA741/2   | Insulated Pre assembled Shorting Link for 2 way shorting   | 100 |
|  | CA741/3   | Insulated Pre assembled Shorting Link for 3 way shorting   | 100 |
|  | CA741/4   | Insulated Pre assembled Shorting Link for 4 way shorting   | 100 |
|  | CA741/10  | Insulated Pre assembled Shorting Link for 10 way shorting  | 10  |
|  | CA741/100 | Insulated Pre assembled Shorting Link for 100 way shorting | 10  |

|  |          |   |     |
|--|----------|---|-----|
|  | CA717/2  | External Comb Type Shorting Link available in 2 Pole  | 100 |
|  | CA717/3  | External Comb Type Shorting Link available in 3 Pole  | 100 |
|  | CA717/4  | External Comb Type Shorting Link available in 4 Pole  | 100 |
|  | CA717/10 | External Comb Type Shorting Link available in 10 Pole | 20  |

|  |           |  |     |
|--|-----------|--|-----|
|  | CA703/01  | Permanent Shorting Links for 2 way shorting    | 100 |
|  | CA704/01  | Permanent Shorting Links for 3 way shorting    | 100 |
|  | CA705/01  | Permanent Shorting Links for 4 way shorting    | 100 |
|  | CA731/10  | Permanent Shorting Links for 10 way shorting   | 100 |
|  | CA731/100 | Permanent Breakable Shorting Links for 100 way | 10  |

|  |              |                           |     |
|--|--------------|---------------------------|-----|
|  | CA707/S/Q/01 | Shorting Sleeve and Screw | 100 |
|--|--------------|---------------------------|-----|

|  |              |                                 |     |
|--|--------------|---------------------------------|-----|
|  | CA707/L/Q/01 | Long Shorting Sleeves and Screw | 100 |
|--|--------------|---------------------------------|-----|

|  |          |                   |     |
|--|----------|-------------------|-----|
|  | CA509/K5 | Blank Marking Tag | 100 |
|--|----------|-------------------|-----|

|  |             |   |     |
|--|-------------|---|-----|
|  | CA707/TS/01 | Test Socket Suitable for CTS2.5UN / CTS2.5UE / CTS4UN / CTC4U / CMB4 / CTLG2.5 / CTL2.5U / CTL2.5UH / ODL4U / ODL4UA / CDLG2.5 / CMC1-2 / CMC2-2 Terminal Blocks. | 100 |
|--|-------------|---|-----|

|  |          |   |    |
|--|----------|---|----|
|  | SCS0.5/3 | Electricians Screwdriver for slotted screws | 10 |
|--|----------|---|----|

**ACCESSORIES**

| IMAGES | CAT. NO. | DESCRIPTION                        | STD. PACK |
|--------|----------|------------------------------------|-----------|
|        | MC5      | MARKER CARD 5MM PITCH WITH 84 TAGS | 10        |

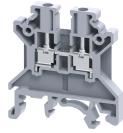
**APPROVALS**



**NOTES**

- 1) Polyamide6,6 flammability V0 grade as per UL 94
- 2) The Rated current is with the use of copper (Cu) conductor/Wire

CTS2.5UNV0



**connectwell**  
THE RIGHT CONNECTION

**RATINGS AS PER STANDARDS**

| <b>STANDARDS</b>                      | <b>UL 1059</b>         | <b>CSA C.22.2 No:158</b> | <b>DIN EN60947-7-1</b>               |
|---------------------------------------|------------------------|--------------------------|--------------------------------------|
| Approvals                             | UL                     | CSA                      | VDE                                  |
| Conductor Cross Section Stranded min. | 22 AWG                 | 22 AWG                   | 0.25 mm <sup>2</sup>                 |
| Conductor Cross Section Stranded max. | 12 AWG                 | 14.0 AWG                 | 2.5 mm <sup>2</sup>                  |
| Rated Voltage                         | 600 V                  | 600 V                    | 1000 V                               |
| Rated Current                         | 25 A                   | 25 A                     | 24 A                                 |
| Tightening Torque                     | 7 lb-in                | 7 lb-in                  | 0.4 Nm                               |
| <b>STANDARDS</b>                      | <b>IEC/EN60947-7-1</b> | <b>EN60079-7</b>         | <b>IEC 60079-0 &amp; IEC 60079-7</b> |
| Approvals                             | CE                     | ATEX                     | AEx                                  |
| Conductor Cross Section Stranded min. | 0.25 mm <sup>2</sup>   | 0.25 mm <sup>2</sup>     | 0.25 mm <sup>2</sup>                 |
| Conductor Cross Section Stranded max. | 2.5 mm <sup>2</sup>    | 2.5 mm <sup>2</sup>      | 2.5 mm <sup>2</sup>                  |
| Rated Voltage                         | 1000 V                 | 630 V                    | 630 V                                |
| Rated Current                         | 24 A                   | 21 A                     | 21 A                                 |
| Tightening Torque                     | 0.4 Nm                 | 0.4 Nm                   | 0.4 Nm                               |
| Operating Temperature Range           |                        | -40 to +85 °C            |                                      |
| <b>STANDARDS</b>                      | <b>EN60079-7</b>       |                          |                                      |
| Approvals                             | ATEX-IECex             |                          |                                      |
| Conductor Cross Section Stranded min. | 0.5 mm <sup>2</sup>    |                          |                                      |
| Conductor Cross Section Stranded max. | 2.5 mm <sup>2</sup>    |                          |                                      |
| Rated Voltage                         | 690 V                  |                          |                                      |
| Rated Current                         | 21 A                   |                          |                                      |
| Tightening Torque                     | 0.4 Nm                 |                          |                                      |