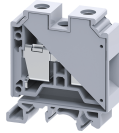


# CTS35UNCR V0



**connectwell**  
THE RIGHT CONNECTION

## 35 sq.mm Feed Through Corrosion Resistant Terminal Blocks

35 sq.mm Feed Through Terminal Blocks are the most Versatile terminals for control, Automation, Instrumentation and Power Distribution applications. A specially designed flexible foot enable easy mounting and dismounting from the Din rail with the help of screw driver. These Terminal Blocks have marker holding recesses to accept marking tags for circuit identification. Cross connection can be achieved with the aid of shorting links / sleeves & screws.

### TECHNICAL DATA

Rated Voltage	1000 V
Rated Current	125 A
Tightening Torque	2.5 Nm
Housing Material	Polymide
Standard Colour	Grey
Product Function	Feed Through
Wire Entry Orientation	Side Entry
Mounting Possibility	DIN 32/DIN 35/DIN 35-15 Rail
Screw Size	M6
Operated by	Screwdriver
Rated Surge Voltage	8 KV
Pollution Degree	3

### CONNECTION DATA

Conductor Cross Section Stranded min.	4 mm <sup>2</sup>
Conductor Cross Section Stranded max.	35 mm <sup>2</sup>
Conductor Cross Section AWG/Kcmil min	12 AWG
Conductor Cross Section AWG/Kcmil max	2 AWG
Conductor Cross Section Stranded with Ferrule/Lug min	4 mm <sup>2</sup>
Conductor Cross Section Stranded with Ferrule/Lug max	35 mm <sup>2</sup>
2 Conductors with same Cross Section Stranded min	4 mm <sup>2</sup>
2 Conductor with same Cross Section Stranded max	16 mm <sup>2</sup>
2 Conductors with same Cross Section Stranded with TWIN Ferrule/Lug min	4 mm <sup>2</sup>
2 Conductor with same Cross Section Stranded with TWIN Ferrule/Lug max	16 mm <sup>2</sup>
Stripping Length	15 mm
Internal Cylindrical Guage	A9

### DIMENSIONS

Height with DIN 32 rail	64.3 mm
Height with DIN 35 x 15 mm rail	66.7 mm
Height with DIN 35 x 7.5 mm rail	59.2 mm
Length	50.5 mm
Width (Thickness)	16 mm

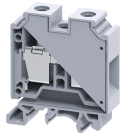
### ORDERING INFORMATION

CAT. NO.	DESCRIPTION	STD. PACK
CTS35UNCRV0	35 sq.mm Feed Through Corrosion Resistant Terminal Block	50

### ACCESSORIES

IMAGES	CAT. NO.	DESCRIPTION	STD. PACK
	CA501-1M	Din 32 Rail unslotted 1 meter	50
	CA501-1M-S	Din 32 Rail slotted 1 meter	50
	CA501-2M	Din 32 Rail unslotted 2 meter	50
	CA501-2M-S	Din 32 Rail slotted 2 meter	50
	CA701-1M	Din 35 Rail unslotted 1 meter	50
	CA701-2M	Din 35 Rail unslotted 2 meter	50
	CA701-2M-S	Din 35 Rail slotted 2 meter	50
	CA701-1M-S	Din 35 Rail slotted 1 meter	50
	CA701-15-1M	Din 35 Rail 15 deep unslotted 1 meter	50
	CA701-15-1M-S	Din 35 Rail 15 deep slotted 1 meter	50
	CA701-15-2M	Din 35 Rail 15 deep unslotted 2 meter	50
	CA701-15-2M-S	Din 35 Rail 15 deep slotted 2 meter	50
	CA702	End Clamp in Polyamide 66 suitable for Din 32 / Din 35 / Din 35-15 Rails	50
	CA802	End Clamp in Polyamide suitable for Din 35 / Din 35-15 Rails	50
	PP35UN	Partition Plate in Grey colour suitable for CTS35UN Terminal Block	50
	CA771/2	Pre assembled Shorting Link for 2 way shorting	50
	CA771/3	Pre assembled Shorting Link for 3 way shorting	20
	CA771/4	Pre assembled Shorting Link for 4 way shorting	20
	CA771/10	Pre assembled Shorting Link for 10 way shorting	10

CTS35UNCR  
V0



**connectwell**  
THE RIGHT CONNECTION

**ACCESSORIES**

IMAGES	CAT. NO.	DESCRIPTION	STD. PACK
	CA781/2	Insulated Pre assembled Shorting Link for 2 way shorting	50
	CA781/3	Insulated Pre assembled Shorting Link for 3 way shorting	20
	CA781/4	Insulated Pre assembled Shorting Link for 4 way shorting	20
	CA781/10	Insulated Pre assembled Shorting Link for 10 way shorting	10
	CA703/10	Permanent Shorting Links for 2 way shorting	100
	CA704/10	Permanent Shorting Links for 3 way shorting	100
	CA705/10	Permanent Shorting Links for 4 way shorting	100
	CA770/10	Permanent Shorting Links for 10 way shorting	100
	CA707/S/Q/2	Shorting Sleeve and Screw suitable for CTS25UN / CTS35UN / CTS35UNA Terminal Blocks.	100
	CA509/K16	Marking Tag Blank suitable for CTS35UNA / CGT35U Terminal Blocks	100
	CA707/TS/06	Test Socket Suitable for CTS25UN / CTS35UN / CTS35UNA Terminal Blocks	100
	SCS1/5.5I	Insulated Electricians Screwdriver for slotted screws	10
	MC16	MARKER CARD 16MM PITCH WITH 24 TAGS	10

**APPROVALS**



**NOTES**

- 1) Polyamide6,6 flammability V0 grade as per UL 94
- 2) The Rated current is with the use of copper (Cu) conductor/Wire

**RATINGS AS PER STANDARDS**

STANDARDS	IEC/EN60947-7-1
Approvals	CE
Conductor Cross Section Stranded min.	4 mm <sup>2</sup>
Conductor Cross Section Stranded max.	35 mm <sup>2</sup>
Rated Voltage	1000 V
Rated Current	125 A
Tightening Torque	2.5 Nm