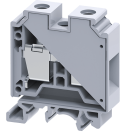


CTS35UNV0



connectwell
THE RIGHT CONNECTION

35 sq.mm Feed Through Terminal Blocks with Slotted Screws

35 sq.mm Feed Through Terminal Blocks are the most Versatile terminals for control, Automation, Instrumentation and Power Distribution applications. A specially designed flexible foot enable easy mounting and dismounting from the Din rail with the help of screw driver. These Terminal Blocks have marker holding recesses to accept marking tags for circuit identification. Cross connection can be achieved with the aid of shorting links / sleeves & screws.

TECHNICAL DATA

Rated Voltage	1000 V
Rated Current	125 A
Tightening Torque	2.5 Nm
Housing Material	Polymide
Standard Colour	Grey
Product Function	Feed Through
Wire Entry Orientation	Side Entry
Mounting Possibility	DIN 32/DIN 35/DIN 35-15 Rail
Screw Size	M6
Operated by	Screwdriver
Rated Surge Voltage	8 KV
Pollution Degree	3

CONNECTION DATA

Conductor Cross Section Stranded min.	4 mm ²
Conductor Cross Section Stranded max.	35 mm ²
Conductor Cross Section AWG/Kcmil min	12 AWG
Conductor Cross Section AWG/Kcmil max	2 AWG
Conductor Cross Section Stranded with Ferrule/Lug min	4 mm ²
Conductor Cross Section Stranded with Ferrule/Lug max	35 mm ²
2 Conductors with same Cross Section Stranded min	4 mm ²
2 Conductor with same Cross Section Stranded max	16 mm ²
2 Conductors with same Cross Section Stranded with TWIN Ferrule/Lug min	4 mm ²
2 Conductor with same Cross Section Stranded with TWIN Ferrule/Lug max	16 mm ²
Stripping Length	15 mm
Internal Cylindrical Guage	A9

DIMENSIONS

Height with DIN 32 rail	64.3 mm
Height with DIN 35 x 15 mm rail	66.7 mm
Height with DIN 35 x 7.5 mm rail	59.2 mm
Length	50.5 mm
Width (Thickness)	16 mm

ORDERING INFORMATION

CAT. NO.	DESCRIPTION	STD. PACK
CTS35UNV0	35 sq.mm Feed Through Terminal Block in Grey colour	50

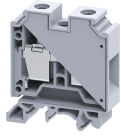
APPROVALS



NOTES

- 1) Polyamide6,6 flammability V0 grade as per UL 94
- 2) The Rated current is with the use of copper (Cu) conductor/Wire

CTS35UNVO



connectwell
THE RIGHT CONNECTION

RATINGS AS PER STANDARDS

STANDARDS	UL 1059	CSA C. 22. 2 No:158	IEC/EN60947-7-1
Approvals	UL	CSA	CE
Conductor Cross Section Stranded min.	12 AWG	12 AWG	4 mm ²
Conductor Cross Section Stranded max.	2 AWG	2 AWG	35 mm ²
Rated Voltage	600 V	600 V	1000 V
Rated Current	130 A	130 A	125 A
Tightening Torque	25 lb-in	25 lb-in	2.5 Nm
STANDARDS	EN60079-7	EN60079-7	
Approvals	ATEX	ATEX-IECex	
Conductor Cross Section Stranded min.	10 mm ²	10 mm ²	
Conductor Cross Section Stranded max.	35 mm ²	35 mm ²	
Rated Voltage	800 V	800 V	
Rated Current	109 A	109 A	
Tightening Torque	2.5 Nm	2.5 Nm	
Operating Temperature Range	-40 to +85 ° C		