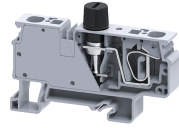


CXVF



connectwell
THE RIGHT CONNECTION

6 sq.mm Spring Clamp Vertical Fuse Terminal Blocks

The Spring Clamp is operated by using a screw driver to provide an access to the wire through an opening in the spring clamp. The inserted wire gets clamped on to the current bar when the screw driver is removed.

TECHNICAL DATA

| | |
|------------------------|-----------------------|
| Rated Voltage | 800 V |
| Rated Current | 10 A |
| Housing Material | Polymide |
| Standard Colour | Grey |
| Product Function | Single Level Fuse |
| Wire Entry Orientation | Top |
| Mounting Possibility | DIN 35/DIN 35-15 Rail |
| Operated by | Screw Driver |
| Rated Surge Voltage | 8 KV |
| Pollution Degree | 3 |

CONNECTION DATA

| | |
|---------------------------------------|---------------------|
| Conductor Cross Section Stranded min. | 0.2 mm ² |
| Conductor Cross Section Stranded max. | 6 mm ² |
| Conductor Cross Section AWG/Kcmil min | 24 AWG |
| Conductor Cross Section AWG/Kcmil max | 8 AWG |
| Stripping Length | 10 mm |

DIMENSIONS

| | |
|----------------------------------|---------|
| Height with DIN 35 x 15 mm rail | 50.5 mm |
| Height with DIN 35 x 7.5 mm rail | 43 mm |
| Length | 75 mm |
| Width (Thickness) | 12 mm |

FUSE SPECIFICATIONS

| | |
|---------------------|-----------------------------|
| Fuse Type | Glass type fuse |
| Fuse Size | 5 X 20, 5 X 25, 6.3 X 32 mm |
| Fuse Current Rating | 10 A |

ORDERING INFORMATION

| CAT. NO. | DESCRIPTION | STD. PACK |
|----------|--|-----------|
| CXVFA | 6 sq.mm Spring Clamp Vertical 5 x 20mm Fuse Terminal Blocks | 50 |
| CXVFB | 6 sq.mm Spring Clamp Vertical 5 x 25mm Fuse Terminal Blocks | 50 |
| CXVFC | 6 sq.mm Spring Clamp Vertical 6.3 x 32mm Fuse Terminal Blocks | 50 |
| CXVFA6A | 6 sq.mm Spring Clamp 6A Vertical Fuse 5 x 20mm Terminal Blocks | 50 |

ACCESSORIES

| IMAGES | CAT. NO. | DESCRIPTION | STD. PACK |
|--------|---------------|--|-----------|
| | CA701-1M | Din 35 Rail unslotted 1 meter | 50 |
| | CA701-2M | Din 35 Rail unslotted 2 meter | 50 |
| | CA701-2M-S | Din 35 Rail slotted 2 meter | 50 |
| | CA701-1M-S | Din 35 Rail slotted 1 meter | 50 |
| | CA701-15-1M | Din 35 Rail 15 deep unslotted 1 meter | 50 |
| | CA701-15-1M-S | Din 35 Rail 15 deep slotted 1 meter | 50 |
| | CA701-15-2M | Din 35 Rail 15 deep unslotted 2 meter | 50 |
| | CA701-15-2M-S | Din 35 Rail 15 deep slotted 2 meter | 50 |
| | CA103 | EndClamp in Polyamide suitable for Din 35/Din 35-15 rails | 50 |
| | CA104 | EndClamp in Polyamide suitable for Din 35/Din 35-15 rails | 50 |
| | CA702 | End Clamp in Polyamide 66 suitable for Din 32 / Din 35 / Din 35-15 Rails | 50 |
| | CA509/K6 | Blank Marking Tag | 100 |
| | SCS0.6/3.5 | Electricians Screwdriver for slotted screws | 10 |
| | JX4/4 | Shorting Link for 6 mm wide TB | 50 |
| | JX4/8 | Shorting Link for 6 mm wide TB | 50 |
| | MC6 | MARKER CARD 6MM PITCH WITH 72 TAGS | 10 |

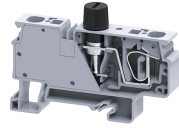
APPROVALS



NOTES

- 1) For shorting 2 no of CXVF we require 4 pole shorting link i.e., JX4/4
- 2) Polyamide V0 material as per UL 94.
- 3) The Rated current is with the use of copper (Cu) conductor/Wire

CXVF



connectwell
THE RIGHT CONNECTION

RATINGS AS PER STANDARDS

| STANDARDS | UL 1059 | CSA C.22.2 No:158 | IEC/EN60947-7-1 |
|---------------------------------------|----------------|--------------------------|------------------------|
| Approvals | UL | CSA | CE |
| Conductor Cross Section Stranded min. | 24 AWG | 24 AWG | 0.2 mm ² |
| Conductor Cross Section Stranded max. | 8 AWG | 8 AWG | 10 mm ² |
| Rated Voltage | 600 V | 600 V | 1000 V |
| Rated Current | 20 A | 20 A | 10 A |