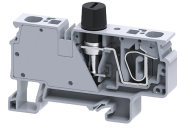


CXVF2.5CL



connectwell
THE RIGHT CONNECTION

2.5 sq.mm Spring Clamp Fuse compact Terminal Blocks with led.

The Spring Clamp is operated by using a screw driver to provide an access to the wire through an opening in the spring clamp. The inserted wire gets clamped on to the current bar when the screw driver is removed.

TECHNICAL DATA

Rated Voltage	800 V
Rated Current	10 A
Housing Material	Polymide
Standard Colour	Grey
Product Function	Single Level Fuse with Indication
Wire Entry Orientation	Top
Mounting Possibility	DIN 35/DIN 35-15 Rail
Operated by	Screwdriver
Rated Surge Voltage	8 V
Pollution Degree	3

CONNECTION DATA

Conductor Cross Section Stranded min.- Input Side	0.2 mm ²
Conductor Cross Section Stranded max. - Input Side	6 mm ²
Conductor Cross Section Stranded min.- Output Side	0.2 mm ²
Conductor Cross Section Stranded max.- Output Side	2.5 mm ²
Conductor Cross Section Stranded min AWG/KCML.- Input Side	24 AWG
Conductor Cross Section Stranded max AWG/KCML.- Input Side	8 AWG
Stripping Length	10 mm

DIMENSIONS

Height with DIN 35 x 15 mm rail	50.5 mm
Height with DIN 35 x 7.5 mm rail	43 mm
Length	75 mm
Width (Thickness)	12 mm

FUSE SPECIFICATIONS

Fuse Type	Glass type fuse
Fuse Size	6.3 X 32 mm
Fuse Current Rating	10 A

ORDERING INFORMATION

CAT. NO.	DESCRIPTION	STD. PACK
CXVF2.5CL24V	2.5 sq.mm 6.3 x 32mm Fuse Terminal Block with indication suitable for 24V in Grey colour	50
CXVF2.5CL60V	2.5 sq.mm 6.3 x 32mm Fuse Terminal Block with indication suitable for 60V in Grey colour	50

ORDERING INFORMATION

CAT. NO.	DESCRIPTION	STD. PACK
CXVF2.5CL12V	2.5 sq.mm 6.3 x 32mm Fuse Terminal Block with indication suitable for 12V in Grey colour	50
CXVF2.5CL230V	2.5 sq.mm 6.3 x 32mm Fuse Terminal Block with indication suitable for 230V in Grey colour	50

ACCESSORIES

IMAGES	CAT. NO.	DESCRIPTION	STD. PACK
	CA701-1M	Din 35 Rail unslotted 1 meter	50
	CA701-2M	Din 35 Rail unslotted 2 meter	50
	CA701-2M-S	Din 35 Rail slotted 2 meter	50
	CA701-1M-S	Din 35 Rail slotted 1 meter	50
	CA701-15-1M	Din 35 Rail 15 deep unslotted 1 meter	50
	CA701-15-1M-S	Din 35 Rail 15 deep slotted 1 meter	50
	CA701-15-2M	Din 35 Rail 15 deep unslotted 2 meter	50
	CA701-15-2M-S	Din 35 Rail 15 deep slotted 2 meter	50
	CA103	EndClamp in Polyamide suitable for Din 35/Din 35-15 rails	50
	CA702	End Clamp in Polyamide 66 suitable for Din 32 / Din 35 / Din 35-15 Rails	50
	CA802	End Clamp in Polyamide suitable for Din 35 / Din 35-15 Rails	50
	SCS0.8/4	Electricians Screwdriver for slotted screws	10
	CA509/K12	Marking Tag Blank suitable for CTS16U / CTS25UN / CGT16N / CDB25 / CMDB25 / CSC16T / CSCG16T / CY16 / CYG16 Terminal Blocks	100
	MC12	MARKER CARD 12MM PITCH WITH 36 TAGS	10

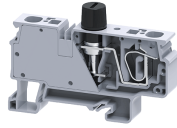
APPROVALS



NOTES

For shorting 2 no of CXVF we require 4 pole shorting link i.e., JX4/4. The Rated current is with the use of copper (Cu) conductor/Wire

CXVF2.5CL



connectwell
THE RIGHT CONNECTION

RATINGS AS PER STANDARDS

STANDARDS	UL 1059	IEC/EN60947-7-3	CSA C.22.2 No:158
Approvals	UL	CE	CSA
Conductor Cross Section Stranded min.	24 AWG	0.2 mm ²	24 AWG
Conductor Cross Section Stranded max.	8 AWG	0.6 mm ²	8 AWG
Rated Voltage	600 V	800 V	600 V
Rated Current	10 A	10 A	10 A