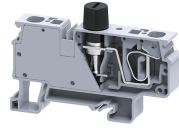


# CXVFL



**connectwell**  
THE RIGHT CONNECTION

## 6 sq.mm Spring Clamp with led Vertical Fuse Terminal Blocks

The Spring Clamp is operated by using a screw driver to provide an access to the wire through an opening in the spring clamp. The inserted wire gets clamped on to the current bar when the screw driver is removed.

### TECHNICAL DATA

|                        |                       |
|------------------------|-----------------------|
| Rated Voltage          | 1000 V                |
| Rated Current          | 10 A                  |
| Housing Material       | Polymide              |
| Standard Colour        | Grey                  |
| Product Function       | Single Level Fuse     |
| Wire Entry Orientation | Top                   |
| Mounting Possibility   | DIN 35/DIN 35-15 Rail |
| Operated by            | Screw Driver          |
| Rated Surge Voltage    | 8 KV                  |
| Pollution Degree       | 3                     |

### CONNECTION DATA

|                                       |                     |
|---------------------------------------|---------------------|
| Conductor Cross Section Stranded min. | 0.2 mm <sup>2</sup> |
| Conductor Cross Section Stranded max. | 6 mm <sup>2</sup>   |
| Conductor Cross Section AWG/Kcmil min | 24 AWG              |
| Conductor Cross Section AWG/Kcmil max | 8 AWG               |
| Stripping Length                      | 10 mm               |

### DIMENSIONS

|                                  |         |
|----------------------------------|---------|
| Height with DIN 35 x 15 mm rail  | 61 mm   |
| Height with DIN 35 x 7.5 mm rail | 53.4 mm |
| Length                           | 76.7 mm |
| Width (Thickness)                | 12 mm   |

### FUSE SPECIFICATIONS

|           |                             |
|-----------|-----------------------------|
| Fuse Type | Glass type fuse             |
| Fuse Size | 5 X 20, 5 X 25, 6.3 X 32 mm |

### ORDERING INFORMATION

| CAT. NO.   | DESCRIPTION  | STD. PACK |
|------------|--|-----------|
| CXVFAL12V  | 6 sqmm 5x20mm Fuse Terminal Block with indication suitable for 12V in Grey colour. | 50        |
| CXVFAL24V  | 6 sqmm 5x20mm Fuse Terminal Block with indication suitable for 24V in              | 50        |
| CXVFAL60V  | 6 sqmm 5x20mm Fuse Terminal Block with indication suitable for 60V in              | 50        |
| CXVFAL230V | 6 sqmm 5x20mm Fuse Terminal Block with indication suitable for 230V in             | 50        |
| CXVFBL12V  | 6 sqmm 5X25mm Fuse Terminal Block with indication suitable for 12V in Grey colour. | 50        |

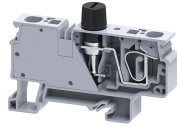
### ORDERING INFORMATION

| CAT. NO.   | DESCRIPTION  | STD. PACK |
|------------|--|-----------|
| CXVFBL24V  | 6 sqmm 5X25mm Fuse Terminal Block with indication suitable for 24V in Grey colour.       | 50        |
| CXVFBL60V  | 6 sqmm 5X25mm Fuse Terminal Block with indication suitable for 60V in Grey colour.       | 50        |
| CXVFBL230V | 6 sqmm 5X25mm Fuse Terminal Block with indication suitable for 230V in Grey colour.      | 50        |
| CXVFCL12V  | 6 sq.mm 6.3 x 32mm Fuse Terminal Block with indication suitable for 12 V in Grey colour  | 50        |
| CXVFCL24V  | 6 sq.mm 6.3 x 32mm Fuse Terminal Block with indication suitable for 24 V in Grey colour  | 50        |
| CXVFCL60V  | 6 sq.mm 6.3 x 32mm Fuse Terminal Block with indication suitable for 60 V in Grey colour  | 50        |
| CXVFCL120V | 6 sq.mm 6.3 x 32mm Fuse Terminal Block with indication suitable for 120 V in Grey colour | 50        |
| CXVFCL230V | 6 sq.mm 6.3 x 32mm Fuse Terminal Block with indication suitable for 230 V in Grey colour | 50        |

### ACCESSORIES

| IMAGES | CAT. NO.      | DESCRIPTION  | STD. PACK |
|--------|---------------|--|-----------|
|        | CA701-1M      | Din 35 Rail unslotted 1 meter  | 50        |
|        | CA701-2M      | Din 35 Rail unslotted 2 meter  | 50        |
|        | CA701-2M-S    | Din 35 Rail slotted 2 meter  | 50        |
|        | CA701-1M-S    | Din 35 Rail slotted 1 meter  | 50        |
|        | CA701-15-1M   | Din 35 Rail 15 deep unslotted 1 meter                                    | 50        |
|        | CA701-15-1M-S | Din 35 Rail 15 deep slotted 1 meter                                      | 50        |
|        | CA701-15-2M   | Din 35 Rail 15 deep unslotted 2 meter                                    | 50        |
|        | CA701-15-2M-S | Din 35 Rail 15 deep slotted 2 meter                                      | 50        |
|        | CA103         | EndClamp in Polyamide suitable for Din 35/Din 35-15 rails                | 50        |
|        | CA702         | End Clamp in Polyamide 66 suitable for Din 32 / Din 35 / Din 35-15 Rails | 50        |
|        | CA802         | End Clamp in Polyamide suitable for Din 35 / Din 35-15 Rails             | 50        |

CXVFL



**connectwell**  
THE RIGHT CONNECTION

**ACCESSORIES**

| IMAGES | CAT. NO.   | DESCRIPTION   | STD. PACK |
|--------|------------|---|-----------|
|        | JX4/2      | Shorting Link for 6 mm wide TB  | 100       |
|        | JX4/3      | Shorting Link for 6 mm wide TB  | 50        |
|        | JX4/4      | Shorting Link for 6 mm wide TB  | 50        |
|        | JX4/5      | Shorting Link for 6 mm wide TB  | 50        |
|        | JX4/8      | Shorting Link for 6 mm wide TB  | 10        |
|        | JX4/10     | Shorting Link for 6 mm wide TB  | 10        |
|        | JX4/16     | Shorting Link for 6 mm wide TB  | 10        |
|        | SCS0.6/3.5 | Electricians Screwdriver for slotted screws   | 10        |
|        | CA509/K12  | Marking Tag Blank suitable for CTS16U / CTS25UN / CGT16N / CDB25 / CMDB25 / CSC16T / CSCG16T / CY16 / CYG16 Terminal Blocks | 100       |
|        | MC12       | MARKER CARD 12MM PITCH WITH 36 TAGS   | 10        |

**APPROVALS**



**NOTES**

- 1) For shorting 2 no of CXVF we require 4 pole shorting link i.e., JX4/4
- 2) Polyamide V0 material as per UL 94.
- 3) The Rated current is with the use of copper (Cu) conductor/Wire

**RATINGS AS PER STANDARDS**

| STANDARDS                             | UL 1059 | CSA C.22.2 No:158 | IEC/EN60947-7-1     |
|---------------------------------------|---------|-------------------|---------------------|
| Approvals                             | UL      | CSA               | CE                  |
| Conductor Cross Section Stranded min. | 24 AWG  | 24 AWG            | 0.2 mm <sup>2</sup> |
| Conductor Cross Section Stranded max. | 8 AWG   | 8 AWG             | 6 mm <sup>2</sup>   |
| Rated Voltage                         | 600 V   | 600 V             | 1000 V              |
| Rated Current                         | 20 A    | 20 A              | 10 A                |