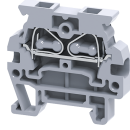


CMS2.5



2.5 sq. mm spring clamp Panel Mount Terminal Blocks.

A perfect solution for extremely compact wiring applications, these terminal block are modular and can be stacked to form multi-pole terminal block assemblies. CM series terminal Block have a side sire entry configuration.

TECHNICAL DATA

Rated Voltage	800 V
Rated Current	24 A
Housing Material	Polymide
Product Function	Feed Through
Wire Entry Orientation	Side
Mounting Possibility	DIN 15 Rail
Rated Surge Voltage	6 KV
Pollution Degree	3

CONNECTION DATA

Conductor Cross Section Stranded min.	0.2 mm ²
Conductor Cross Section Stranded max.	2.5 mm ²
Conductor Cross Section AWG/Kcmil min	24 AWG
Conductor Cross Section AWG/Kcmil max	12 AWG
Conductor Cross Section Stranded with Ferrule/Lug min	0.2 mm ²
Conductor Cross Section Stranded with Ferrule/Lug max	2.5 mm ²
2 Conductors with same Cross Section Stranded min	0.2 mm ²
2 Conductor with same Cross Section Stranded max	1.5 mm ²
Conductor Cross Section Solid min	0.2 mm ²
Conductor Cross Section Solid max	4 mm ²
2 Conductors with same Cross Section Stranded with TWIN Ferrule/Lug min	0.2 mm ²
2 Conductor with same Cross Section Stranded with TWIN Ferrule/Lug max	0.5 mm ²
Stripping Length	9 mm

DIMENSIONS

Height with DIN 15 x 5 mm rail	30.15 mm
Length	31 mm
Width (Thickness)	5 mm

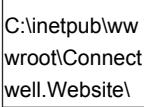





ORDERING INFORMATION

CAT. NO.	DESCRIPTION	STD. PACK
CMS2.5	2.5 sqmm Micro Spring Clamp Terminal Block in Grey colour.	50
CMS2.5R	2.5 sqmm Micro Spring Clamp Terminal Block in Red colour.	50
CMS2.5Y	2.5 sqmm Micro Spring Clamp Terminal Block in Yellow colour.	50

ORDERING INFORMATION

CAT. NO.	DESCRIPTION	STD. PACK
CMS2.5BU	2.5 sqmm Micro Spring Clamp Terminal Block in Blue colour.	50
CMS2.5BK	2.5 sqmm Micro Spring Clamp Terminal Block in Black colour.	50
CMS2.5GN	2.5 sqmm Micro Spring Clamp Terminal Block in Green colour.	50

ACCESSORIES

IMAGES	CAT. NO.	DESCRIPTION	STD. PACK
	EPCMS2.5	End Plate in Grey Colour	50
	CA601	Din 15 Rail unslotted	100
	CA601-1M	DIN 15 RAIL 1 METER SLOTTED	50
	SCS0.5/3	Electricians Screwdriver for slotted screws	10
	CA509/K5	Blank Marking Tag	100
	MC5	MARKER CARD 5MM PITCH WITH 84 TAGS	10

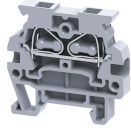
APPROVALS



NOTES

The Rated current is with the use of copper (Cu) conductor/Wire

CMS2.5



connectwell
THE RIGHT CONNECTION

RATINGS AS PER STANDARDS

STANDARDS	UL 1059	CSA C.22.2 No:158	IEC/EN60947-7-1
Approvals	UL	CSA	CE
Conductor Cross Section Stranded min.	24 AWG	24 AWG	0.2 mm ²
Conductor Cross Section Stranded max.	12 AWG	12 AWG	2.5 mm ²
Rated Voltage	300 V	300 V	800 V
Rated Current	20 A	20 A	24 A