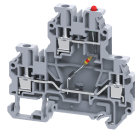


CYDL4(E)LD5



4 sq.mm Terminal Blocks with diode circuit - LD5 configuration

Double Level Terminal Block are available with AC voltage indicator with LED

TECHNICAL DATA

Rated Voltage	300 V
Rated Current	1 A
Tightening Torque	0.5 Nm
Housing Material	Polymide
Standard Colour	Grey
Product Function	With Electronic Components: Diode/Resistor
Wire Entry Orientation	Side Entry
Mounting Possibility	DIN 35/DIN 35-15 Rail
Operated by	Screwdriver
Rated Surge Voltage	8 KV
Pollution Degree	3

CONNECTION DATA

Conductor Cross Section Stranded min.	0.2 mm ²
Conductor Cross Section Stranded max.	4 mm ²
Conductor Cross Section AWG/Kcmil min	24 AWG
Conductor Cross Section AWG/Kcmil max	10 AWG
Conductor Cross Section Stranded with Ferrule/Lug min	0.2 mm ²
Conductor Cross Section Stranded with Ferrule/Lug max	4 mm ²
2 Conductors with same Cross Section Stranded min	0.5 mm ²
2 Conductor with same Cross Section Stranded max	2.5 mm ²
Conductor Cross Section Solid min	0.2 mm ²
Conductor Cross Section Solid max	6 mm ²
2 Conductors with same Cross Section Stranded with TWIN Ferrule/Lug min	0.5 mm ²
2 Conductor with same Cross Section Stranded with TWIN Ferrule/Lug max	2.5 mm ²
Stripping Length	9 mm

DIMENSIONS

Height with DIN 35 x 15 mm rail	73.4 mm
Height with DIN 35 x 7.5 mm rail	65.9 mm
Length	70.5 mm
Width (Thickness)	6 mm

ORDERING INFORMATION

CAT. NO.	DESCRIPTION	STD. PACK
CYDL4(E)LD524V	4 sq.mm Terminal Block with electronic	50

ORDERING INFORMATION

CAT. NO.	DESCRIPTION	STD. PACK
	components for 24V in Grey colour.	
CYDL4(E)LD5110V	4 sq.mm Terminal Block with electronic components for 110V in Grey colour.	50
CYDL4(E)LD5220V	4 sq.mm Terminal Block with electronic components for 220V in Grey colour.	50

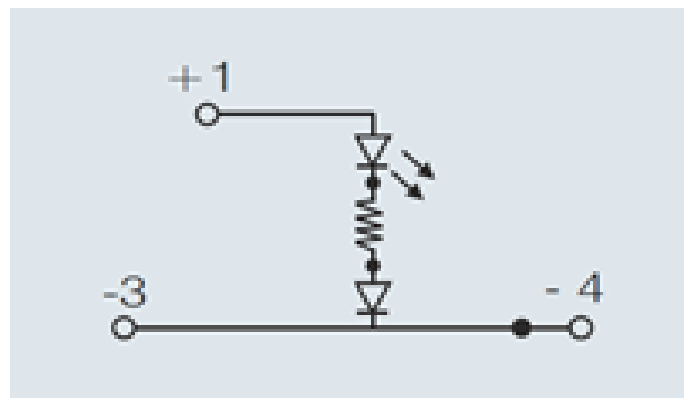
APPROVALS



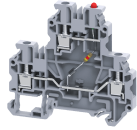
NOTES

The Rated current is with the use of copper (Cu) conductor/Wire

CIRCUIT DIAGRAM



CYDL4(E)LD5



connectwell
THE RIGHT CONNECTION

RATINGS AS PER STANDARDS

STANDARDS	UL 1059	IEC/EN60947-7-1
Conductor Cross Section Stranded min.	24 AWG	0.2 mm ²
Conductor Cross Section Stranded max.	10 AWG	4 mm ²
Rated Voltage	300 V	300 V
Rated Current	1 A	1 A
Tightening Torque	4.5 lb-in	0.5 Nm