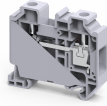


CY16


**connectwell**  
 THE RIGHT CONNECTION

### 16 sq.mm Standard Feed Through Terminal Blocks

CY series Screw Clamp Terminal Blocks are the next generation compact Terminals. These series of Terminal Blocks have an improved 1000V rating as per IEC guidelines.

#### TECHNICAL DATA

Rated Voltage	1000 V
Rated Current	76 A
Tightening Torque	1.2 Nm
Housing Material	Polymide
Product Function	Feed Through
Wire Entry Orientation	Side Entry
Mounting Possibility	DIN 35/DIN 35-15 Rail
Screw Size	M4
Operated by	Screwdriver
Rated Surge Voltage	8 KV
Pollution Degree	3

#### CONNECTION DATA

Conductor Cross Section Stranded min.	1.5 mm <sup>2</sup>
Conductor Cross Section Stranded max.	16 mm <sup>2</sup>
Conductor Cross Section AWG/Kcmil min	16 AWG
Conductor Cross Section AWG/Kcmil max	4 AWG
Conductor Cross Section Stranded with Ferrule/Lug min	1.5 mm <sup>2</sup>
Conductor Cross Section Stranded with Ferrule/Lug max	16 mm <sup>2</sup>
2 Conductors with same Cross Section Stranded min	1.5 mm <sup>2</sup>
2 Conductor with same Cross Section Stranded max	10 mm <sup>2</sup>
2 Conductors with same Cross Section Stranded with TWIN Ferrule/Lug min	1.5 mm <sup>2</sup>
2 Conductor with same Cross Section Stranded with TWIN Ferrule/Lug max	10 mm <sup>2</sup>
Stripping Length	12 mm
Internal Cylindrical Gauge	A7

#### DIMENSIONS

Height with DIN 35 x 15 mm rail	58.5 mm
Height with DIN 35 x 7.5 mm rail	50.8 mm
Length	58.9 mm
Width (Thickness)	12 mm

#### ORDERING INFORMATION

CAT. NO.	DESCRIPTION	STD. PACK
CY16	16 sq.mm Feed Through Terminal Block in Grey colour	50

#### ACCESSORIES

IMAGES	CAT. NO.	DESCRIPTION	STD. PACK
	JY16/2	Shorting Link for 16 sq mm CY series	50
	CA701-1M	Din 35 Rail unslotted 1 meter	50
	CA701-2M	Din 35 Rail unslotted 2 meter	50
	CA701-2M-S	Din 35 Rail slotted 2 meter	50
	CA701-1M-S	Din 35 Rail slotted 1 meter	50
	CA701-15-1M	Din 35 Rail 15 deep unslotted 1 meter	50
	CA701-15-1M-S	Din 35 Rail 15 deep slotted 1 meter	50
	CA701-15-2M	Din 35 Rail 15 deep unslotted 2 meter	50
	CA701-15-2M-S	Din 35 Rail 15 deep slotted 2 meter	50
	CA702	End Clamp in Polyamide 66 suitable for Din 32 / Din 35 / Din 35-15 Rails	50
	CA802	End Clamp in Polyamide suitable for Din 35 / Din 35-15 Rails	50
	CA509/K12	Marking Tag Blank suitable for CTS16U / CTS25UN / CGT16N / CDB25 / CMDB25 / CSC16T / CSCG16T / CY16 / CYG16 Terminal Blocks	100
	SCS1/5.5	Electricians Screwdriver for slotted screws	10
	MC12	MARKER CARD 12MM PITCH WITH 36 TAGS	10

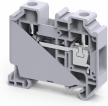
#### APPROVALS



#### NOTES

The Rated current is with the use of copper (Cu) conductor/Wire.

CY16



**connectwell**  
THE RIGHT CONNECTION

RATINGS AS PER STANDARDS

STANDARDS	UL 1059	IEC/EN60947-7-1
Conductor Cross Section Stranded min.	16 AWG	1.5 mm <sup>2</sup>
Conductor Cross Section Stranded max.	4 AWG	16 mm <sup>2</sup>
Rated Voltage	600 V	1000 V
Rated Current	85 A	76 A
Tightening Torque	14 lb-in	1.2 Nm