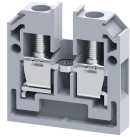


CMB4



4 sq. mm Panel Mount Terminal Blocks.

A perfect solution for extremely compact wiring applications, these terminal block are modular and can be stacked to form multi-pole terminal block assemblies.

TECHNICAL DATA

Rated Voltage	500 V
Rated Current	32 A
Tightening Torque	0.5 Nm
Housing Material	Polymide
Product Function	Feed Through
Wire Entry Orientation	Side
Mounting Possibility	Panel/Surface
Screw Size	M3
Operated by	Screwdriver
Rated Surge Voltage	4 KV
Pollution Degree	3

CONNECTION DATA

Conductor Cross Section Stranded min.	0.2 mm ²
Conductor Cross Section Stranded max.	4 mm ²
Conductor Cross Section AWG/Kcmil min	22 AWG
Conductor Cross Section AWG/Kcmil max	10 AWG
Conductor Cross Section Stranded with Ferrule/Lug min	0.2 mm ²
Conductor Cross Section Stranded with Ferrule/Lug max	4 mm ²
2 Conductors with same Cross Section Stranded min	0.2 mm ²
2 Conductor with same Cross Section Stranded max	2.5 mm ²
Conductor Cross Section Solid min	0.2 mm ²
Conductor Cross Section Solid max	6 mm ²
2 Conductors with same Cross Section Stranded with TWIN Ferrule/Lug min	0.2 mm ²
2 Conductor with same Cross Section Stranded with TWIN Ferrule/Lug max	2.5 mm ²
Stripping Length	9 mm
Internal Cylindrical Guage	A4

DIMENSIONS

Height	28.5 mm
Length	27 mm
Width (Thickness)	6 mm

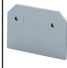




ORDERING INFORMATION

CAT. NO.	DESCRIPTION	STD. PACK
CMB4	4 sqmm Panel Mount Terminal Block in Grey colour.	100

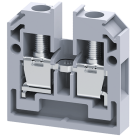
ORDERING INFORMATION

CAT. NO.	DESCRIPTION	STD. PACK
CMB4R	4 sqmm Panel Mount Terminal Block in Red colour.	100
CMB4Y	4 sqmm Panel Mount Terminal Block in Yellow colour.	100
CMB4BU	4 sqmm Panel Mount Terminal Block in Blue colour.	100
CMB4BK	4 sqmm Panel Mount Terminal Block in Black colour.	100
CMB4GN	4 sqmm Panel Mount Terminal Block in Green colour.	100
CMB4W	4 sqmm Panel Mount Terminal Block in White colour.	100

ACCESSORIES

IMAGES	CAT. NO.	DESCRIPTION	STD. PACK
	EPCMB4	End Plate in Grey colour suitable for CMB4 Terminal Block	50
	SPCMB4	Separator Plate in Grey colour	100
	CA727/2	Pre Assembled Shorting Link assemblies with 2 poles	100
	CA727/3	Pre Assembled Shorting Links assemblies with 3 poles	100
	CA727/4	Pre Assembled Shorting Link assemblies with 4 poles	100
	CA727/10	Pre Assembled Shorting Links assemblies with 10 poles	10
	CA747/2	Pre assembled Shorting Link for 2 way shorting	100
	CA747/3	Pre assembled Shorting Link for 3 way shorting	100
	CA747/4	Pre assembled Shorting Link for 4 way shorting	100
	CA747/10	Pre assembled Shorting Link for 10 way shorting	10
	CA714/2	External Comb Type Shorting Link Available in 2 pole	100
	CA714/3	External Comb Type Shorting Link Available in 3 pole	100
	CA714/4	External Comb Type Shorting Link Available in 4 pole	100
	CA714/10	External Comb Type Shorting Link Available in 10 pole	20

CMB4



connectwell
THE RIGHT CONNECTION

ACCESSORIES

IMAGES	CAT. NO.	DESCRIPTION	STD. PACK
	CA703/1	Permanent Shorting Link for 2 way shorting	100
	CA704/1	Permanent Shorting Link for 3 way shorting	100
	CA705/1	Permanent Shorting Link for 4 way shorting	100
	CA732/10	Permanent Shorting Link for 10 way shorting	100
	CA732/10-A	Permanent Shorting Link (Breakable) for 10 way shorting	100
	CA732/100	Permanent Shorting Link for 100 way shorting	100
	CA607/S/Q	Shorting Sleeve and Screw	100
	CA509/K2	Marking Tag Blank suitable for CDL4U / CDL4U(I.S) / CTL2.5U / CTL2.5UH / CTL2.5UL / CTL2.5HUL / CTL2.5U(I.S) / CTL2.5U(I.S)D2 / CGMT4 / CSFL4U / CSFL4U(L) / CMT4 / CMB4 / ASF4 / ASF4(L) / CTS2.5{	100
	CA707/TS/01	Test Socket Suitable for CTS2.5UN / CTS2.5UE / CTS4UN / CTC4U / CMB4 / CTLG2.5 / CTL2.5U / CTL2.5UH / ODL4U / ODL4UA / CDLG2.5 / CMC1-2 / CMC2-2 Terminal Blocks.	100
	SCS0.6/3.5	Electricians Screwdriver for slotted screws	10

APPROVALS



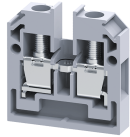
NOTES

The Rated current is with the use of copper (Cu) conductor/Wire

RATINGS AS PER STANDARDS

STANDARDS	UL 1059	CSA C.22.2 No:158	DIN EN60947-7-1
Approvals	UL	CSA	VDE
Conductor Cross Section Stranded min.	22 AWG	22 AWG	0.5 mm ²
Conductor Cross Section Stranded max.	10 AWG	10 AWG	4 mm ²
Rated Voltage	300 V	300 V	400 V
Rated Current	30 A	35 A	32 A
Tightening Torque	7 lb-in	7 lb-in	0.5 Nm

CMB4



connectwell
THE RIGHT CONNECTION

RATINGS AS PER STANDARDS

STANDARDS	EN60079-7	IEC/EN60947-7-1	EN60079-7
Approvals	ATEX	CE	ATEX-IECex
Conductor Cross Section Stranded min.	0.5 mm ²	0.2 mm ²	0.5 mm ²
Conductor Cross Section Stranded max.	4 mm ²	4 mm ²	4 mm ²
Rated Voltage	440 V	500 V	440 V
Rated Current	28 A	32 A	28 A
Tightening Torque	0.5 Nm	0.5 Nm	0.5 Nm
Operating Temperature Range	-40 to +85 °C		