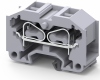


# CM2.5S2LF



2.5 sq. mm spring clamp terminal block with mounting feet.

A perfect solution for extremely compact wiring applications, these terminal block are modular and can be stacked to form multi-pole terminal block assemblies. CMLF series terminal Block have a side wire entry configuration.

## TECHNICAL DATA

Rated Voltage	500 V
Rated Current	24 A
Housing Material	Polymide
Standard Colour	Grey
Product Function	Feed Through
Wire Entry Orientation	Side
Mounting Possibility	DIN 35/DIN 35-15 Rail
Rated Surge Voltage	6 KV
Pollution Degree	3

## CONNECTION DATA

Conductor Cross Section Stranded min.	0.2 mm <sup>2</sup>
Conductor Cross Section Stranded max.	2.5 mm <sup>2</sup>
Conductor Cross Section AWG/Kcmil min	22 AWG
Conductor Cross Section AWG/Kcmil max	12 AWG
Conductor Cross Section Stranded with Ferrule/Lug min	0.2 mm <sup>2</sup>
Conductor Cross Section Stranded with Ferrule/Lug max	2.5 mm <sup>2</sup>
2 Conductors with same Cross Section Stranded min	0.2 mm <sup>2</sup>
2 Conductor with same Cross Section Stranded max	1.5 mm <sup>2</sup>
Conductor Cross Section Solid min	0.2 mm <sup>2</sup>
Conductor Cross Section Solid max	4 mm <sup>2</sup>
Stripping Length	8 mm

## DIMENSIONS

Height	20 mm
Length	30 mm
Width (Thickness)	10 mm

## ORDERING INFORMATION

CAT. NO.	DESCRIPTION	STD. PACK
CM2.5S2LF	2.5 sqmm spring clamp terminal block with mounting feet in grey colour	50
CM2.5S2LFO	2.5 sqmm spring clamp terminal block with mounting feet in Orange colour	50

## NOTES

The Rated current is with the use of copper (Cu) conductor/Wire

CM2.5S2LF



**connectwell**  
THE RIGHT CONNECTION

RATINGS AS PER STANDARDS

STANDARDS	IEC/EN60947-7-1	UL 1059
Conductor Cross Section Stranded min.	0.2 mm <sup>2</sup>	22 AWG
Conductor Cross Section Stranded max.	2.5 mm <sup>2</sup>	12 AWG
Rated Voltage	500 V	300 V
Rated Current	24 A	20 A